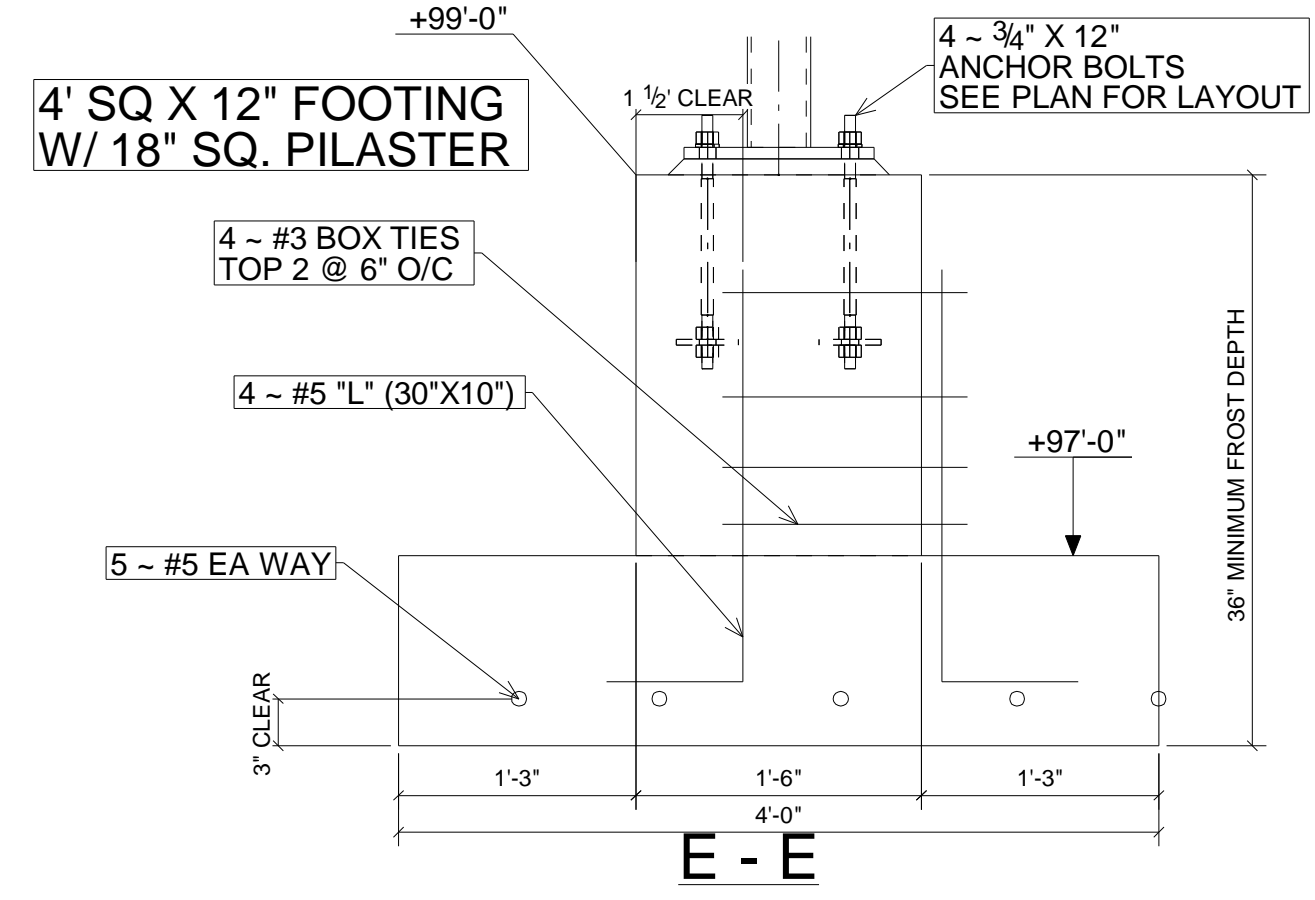
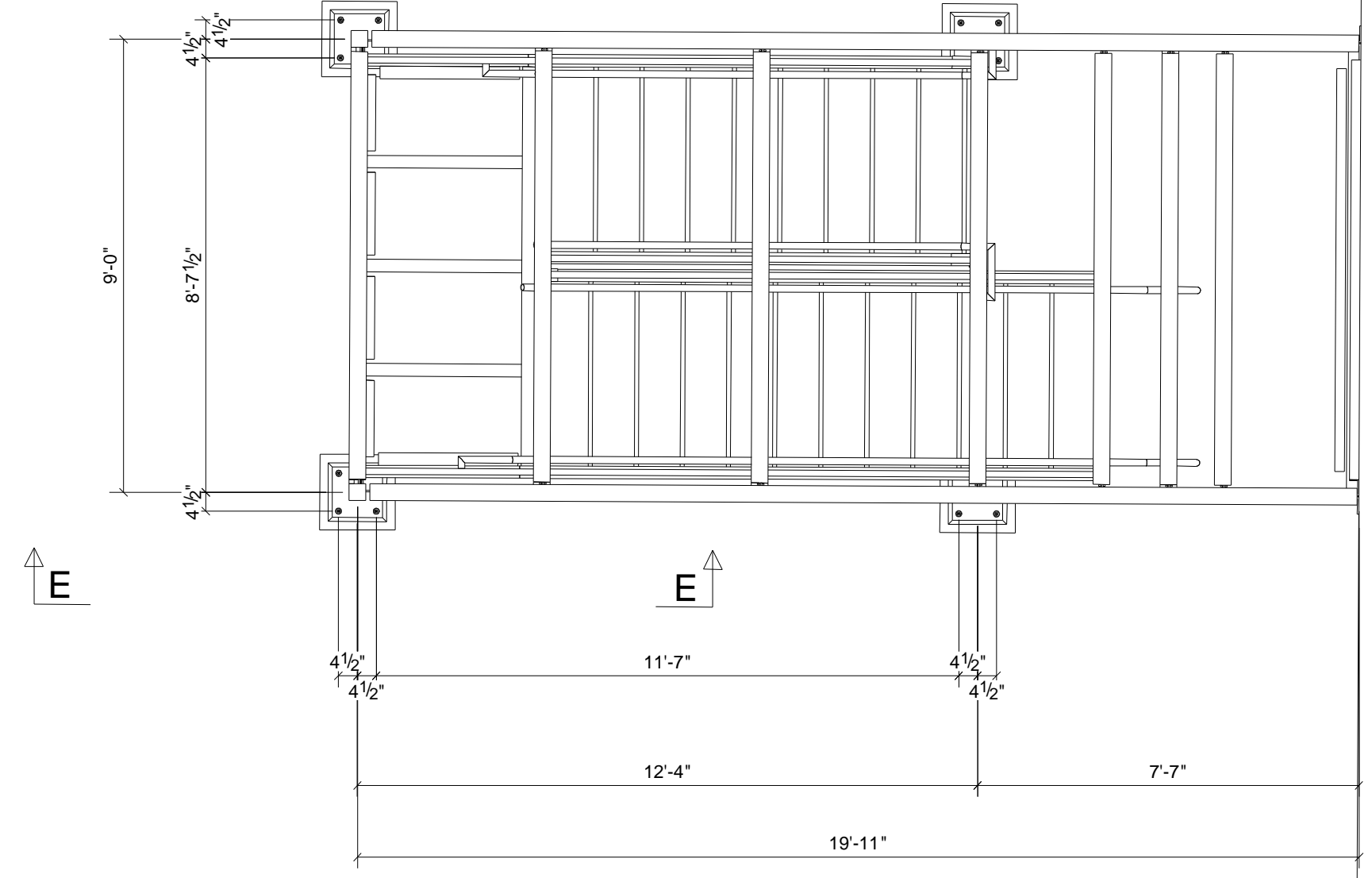


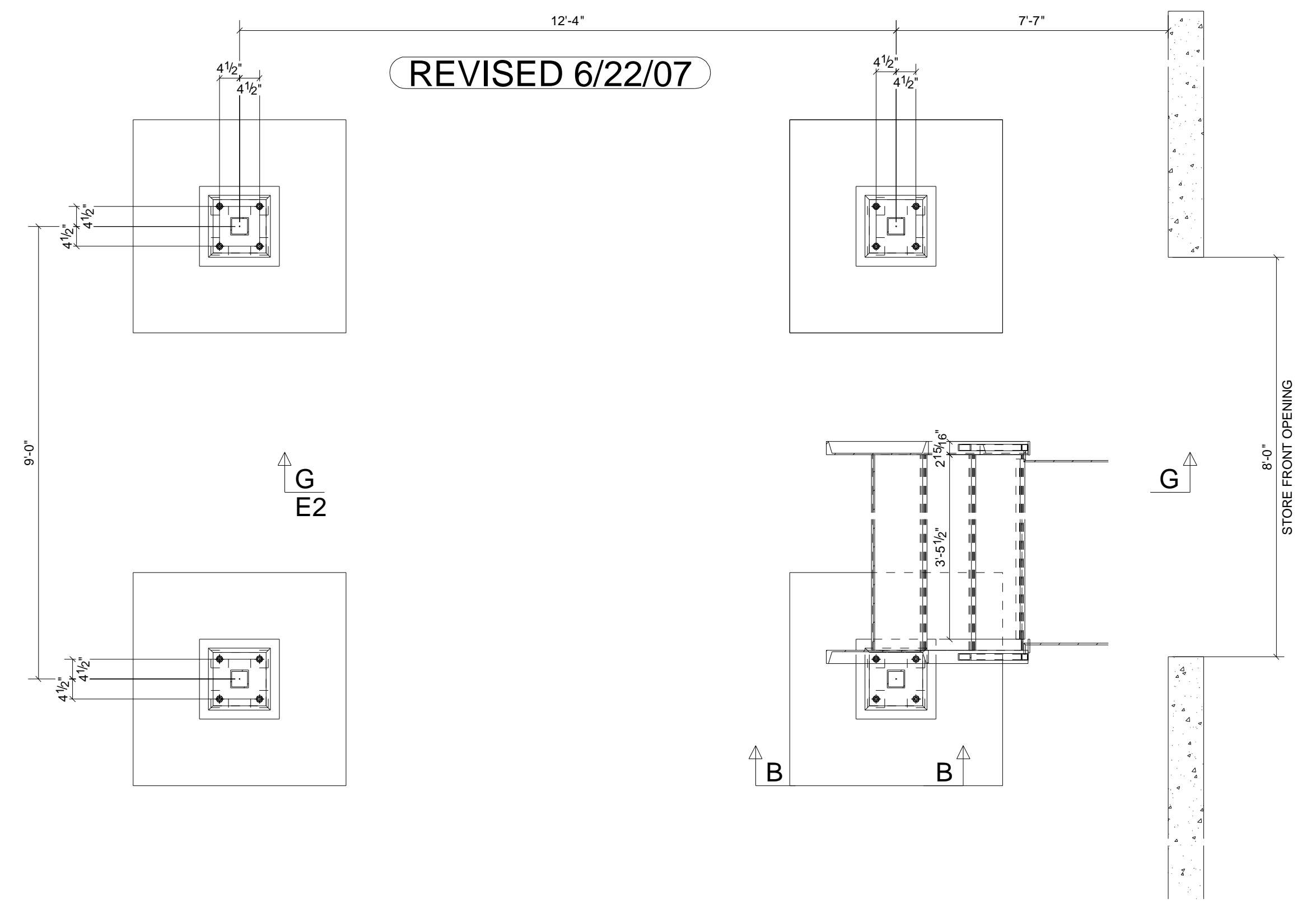
REV	DESCRIPTION	DATE
<b>METAL SOLUTIONS, INC</b> 6863 CR #60 WINDSOR, CO		
DESCRIPTION		ISO
PROJECT NAME		AURORA LANGUAGE CENTER
DRAWN BY		JOB No. 07.05
DATE DRAWN	03/02/2007	DRG No. 3D

**GC - ANCHOR BOLT LAYOUT**  
 16 ~ A307 3/4" DIA X 12" BOLTS  
 W/ 1-NUT & 1-WASHER EA.

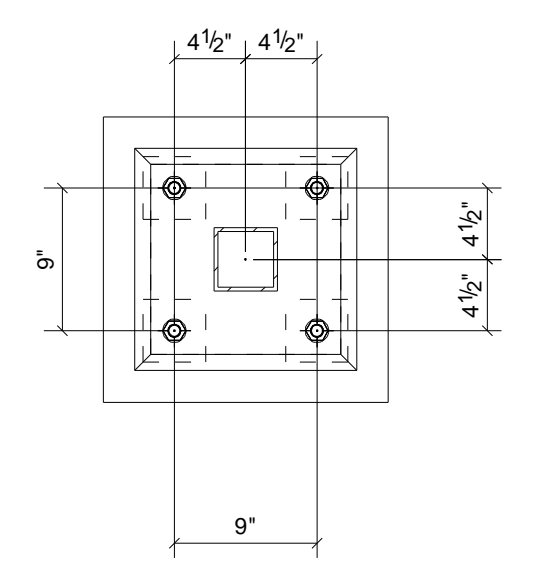
PLAN NORTH  
 ACT. MAY VARY



REVISED 6/22/07

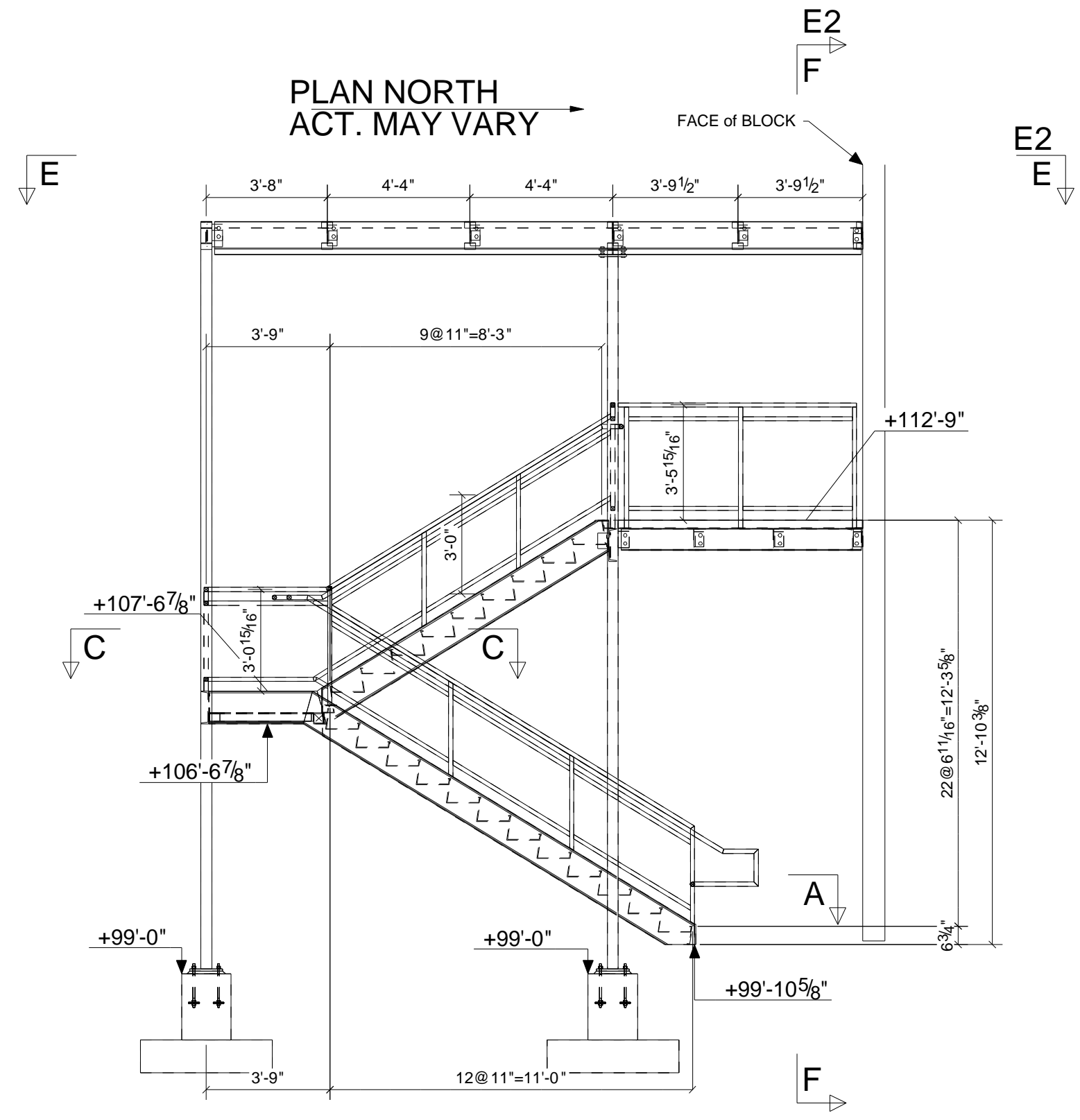


A - A

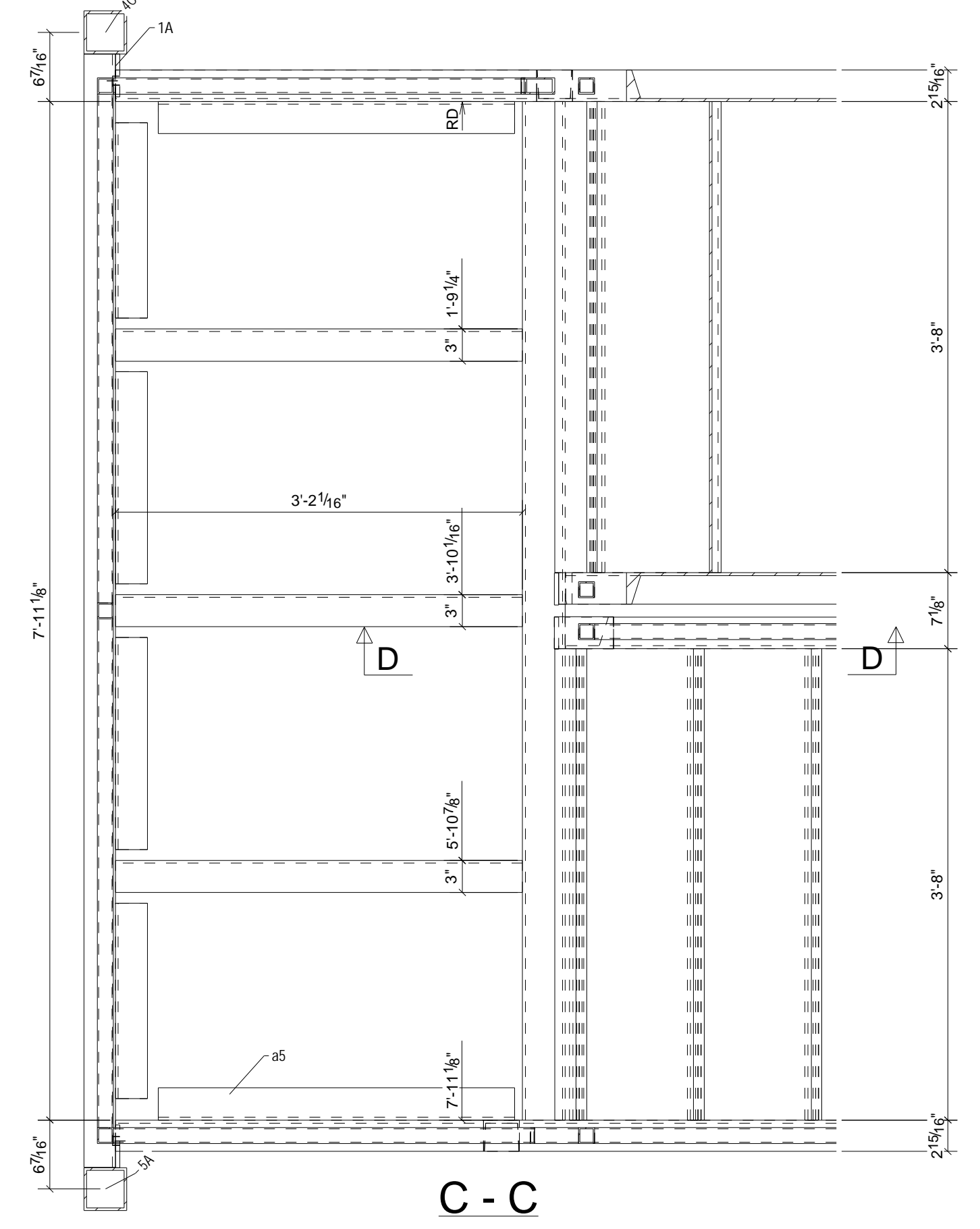


DETAIL A

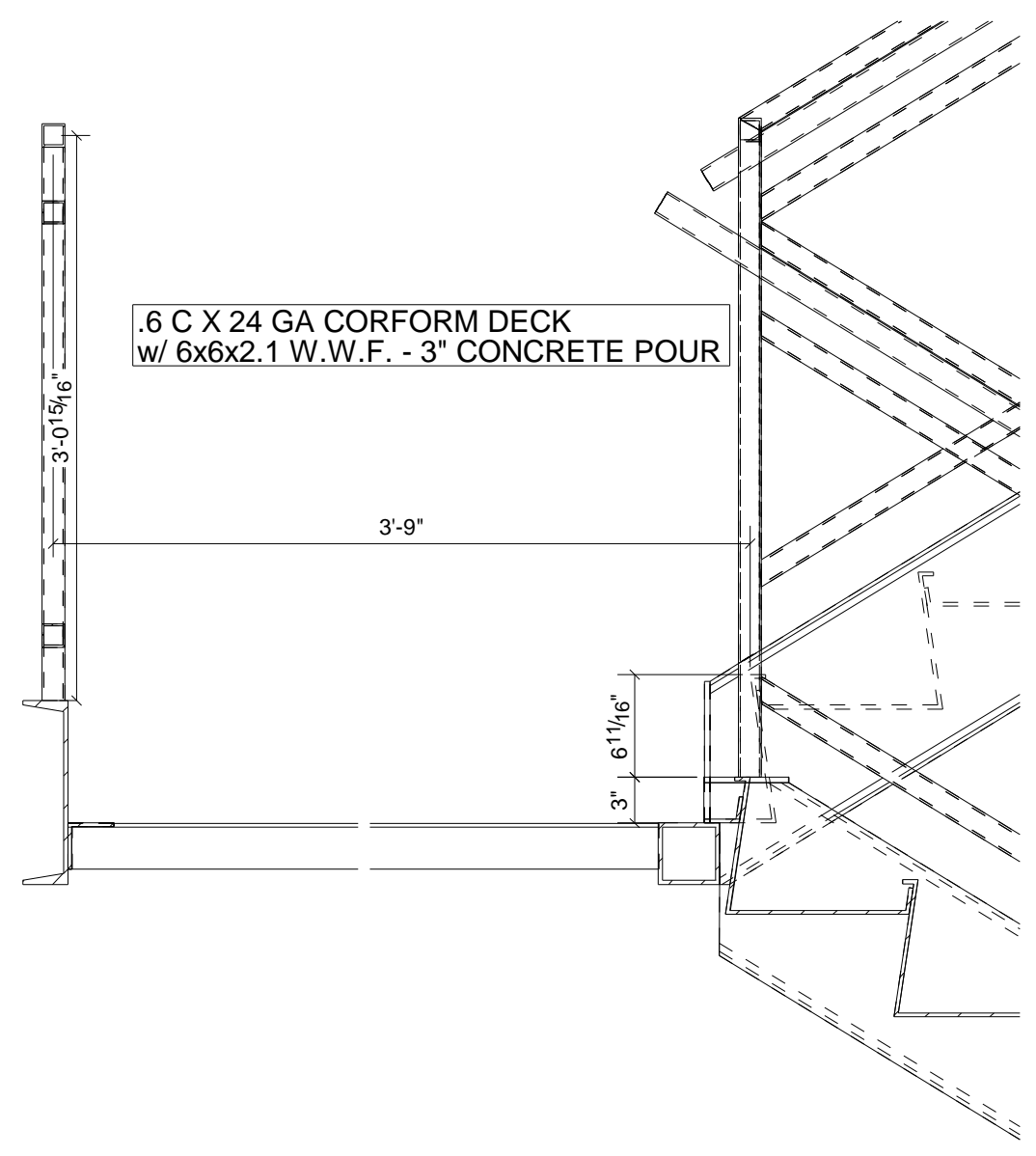
PLAN NORTH  
 ACT. MAY VARY



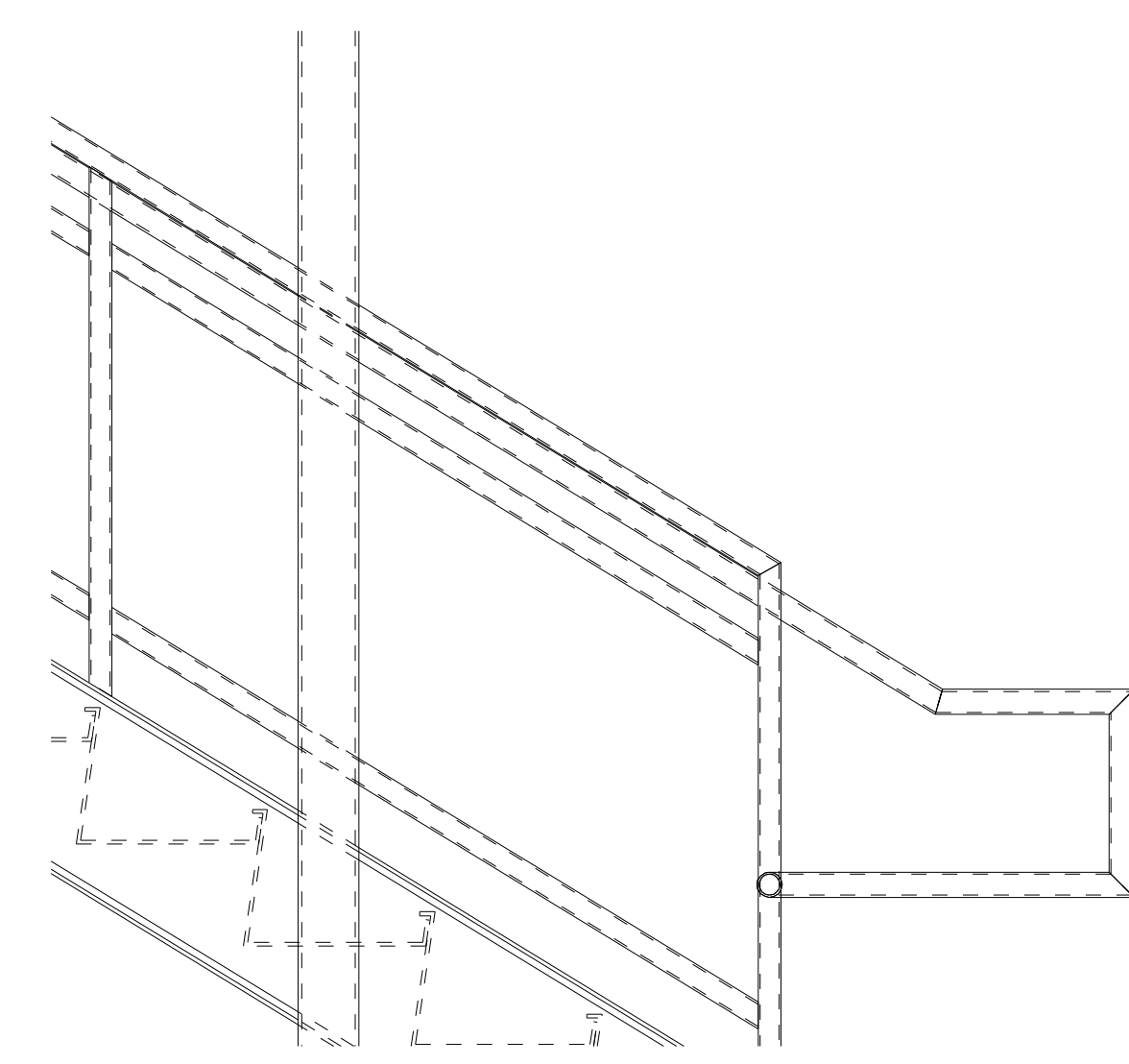
GC - PROVIDE MIN 6'-8" HEADROOM FROM BOTT  
 OF INTERMEDIATE LANDING TO "NEW SIDE WALK BELOW"



C - C



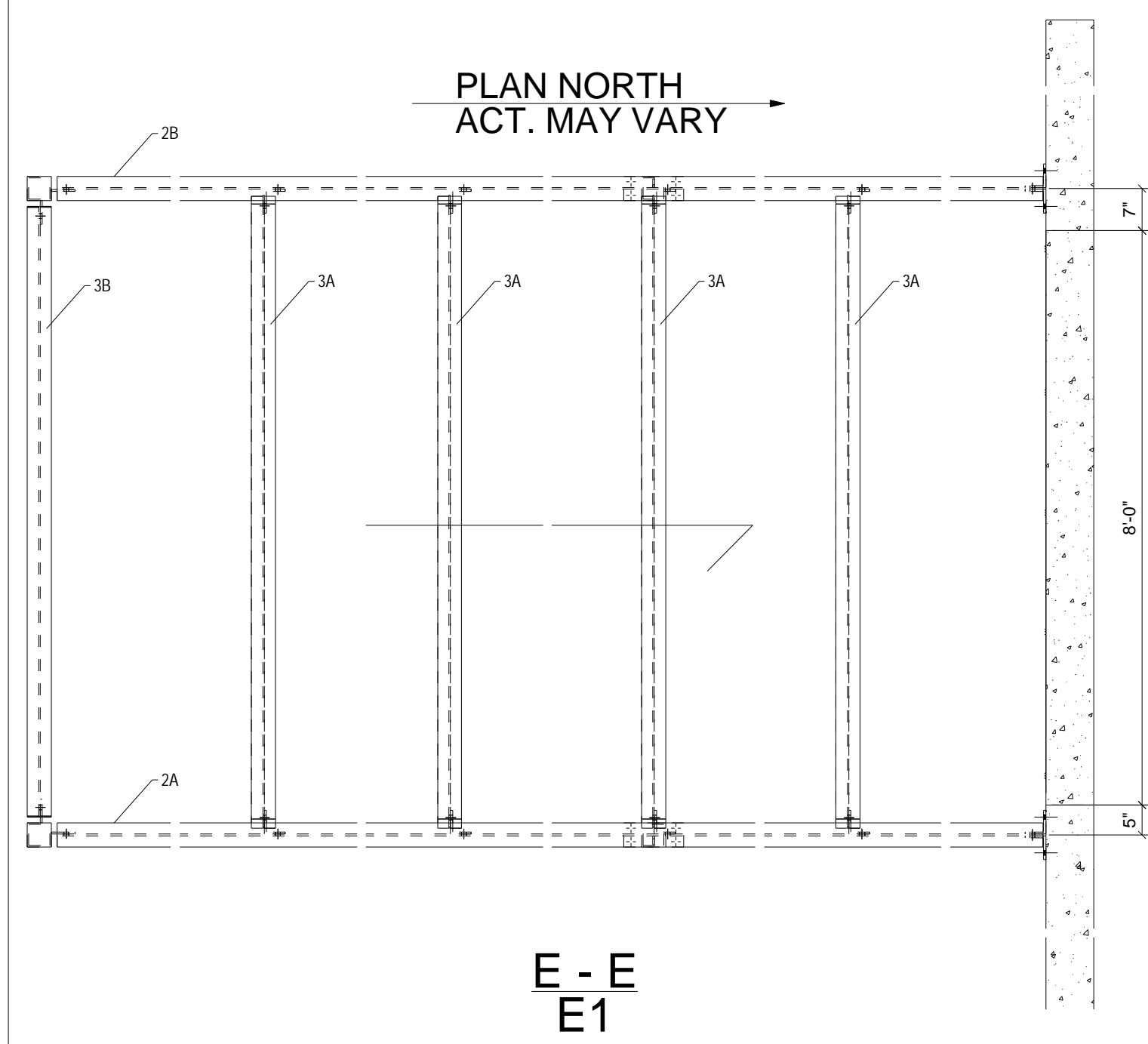
D - D



B - B

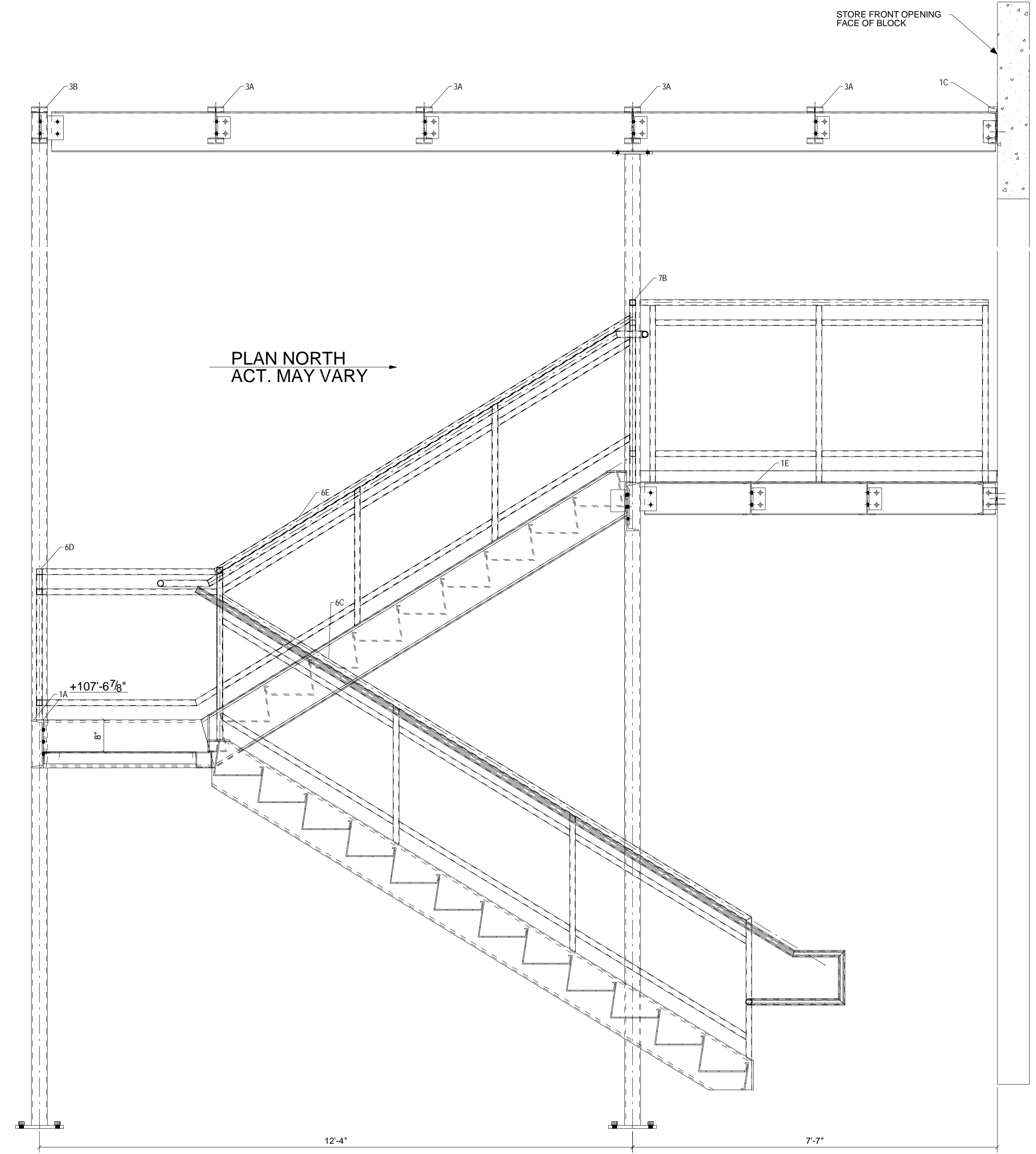
GC. NOTE: DOOR SILL IS EL.100'-0" /BOTTOM OF STAIR IS @ EL.99'-10 5/8"  
 SLOPE NEW CONCRETE WALK AS NEEDED  
 CREATE MINIMUM HEAD ROOM UNDER  
 INTERMEDIATE LANDING OF 6'-8"

REV	DESCRIPTION	DATE
METAL SOLUTIONS, INC		
6863 CR #60		
WINDSOR, CO		
DESCRIPTION	PLAN @	
PROJECT NAME	AURORA LANGUAGE CENTER	
DRAWN BY	JOB No.	DRG No.
DATE DRAWN	03/05/2007	07.05 E1

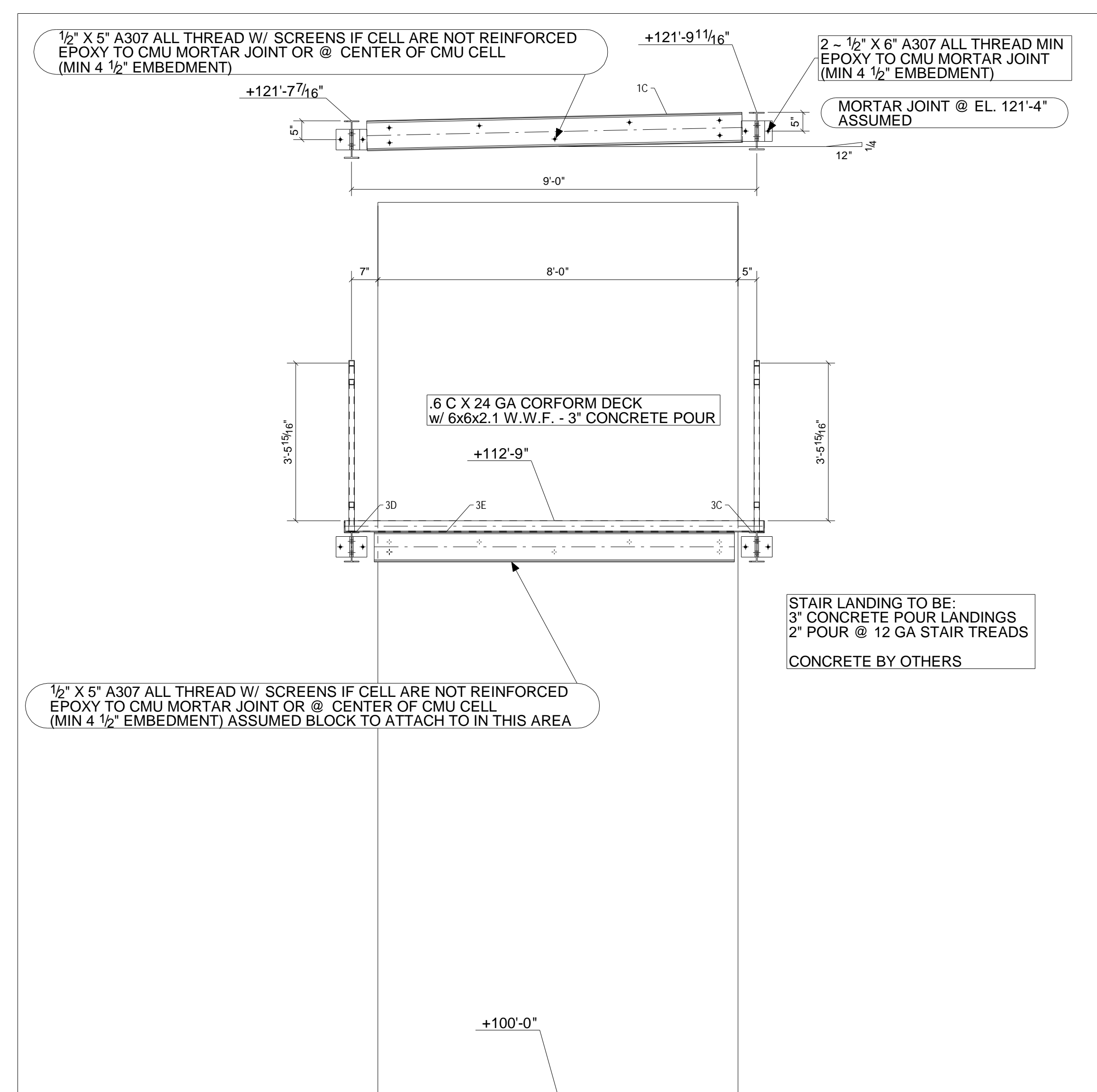


ROOF DECK TO BE:  
 1.5 X 22 GA TYP B - X 20'-2" PAINTED  
 FIELD CUT TO SUIT  
 WELDED @ EVERY FLUTE W/ 5/8"  
 W/ 3 ~ #10 TEK SCREWS @ SIDELAPS  
 PUDDLE WELD - NO EDGE ANGLE  
 STANDING SEAM & GUTTER BY OTHERS

E - E  
E1

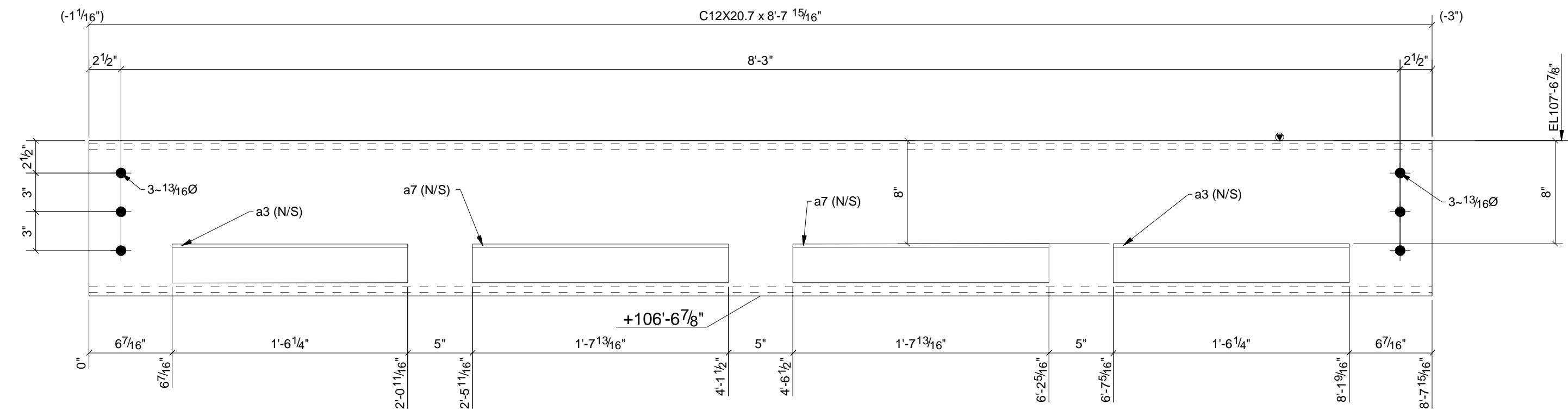


G - G  
E1

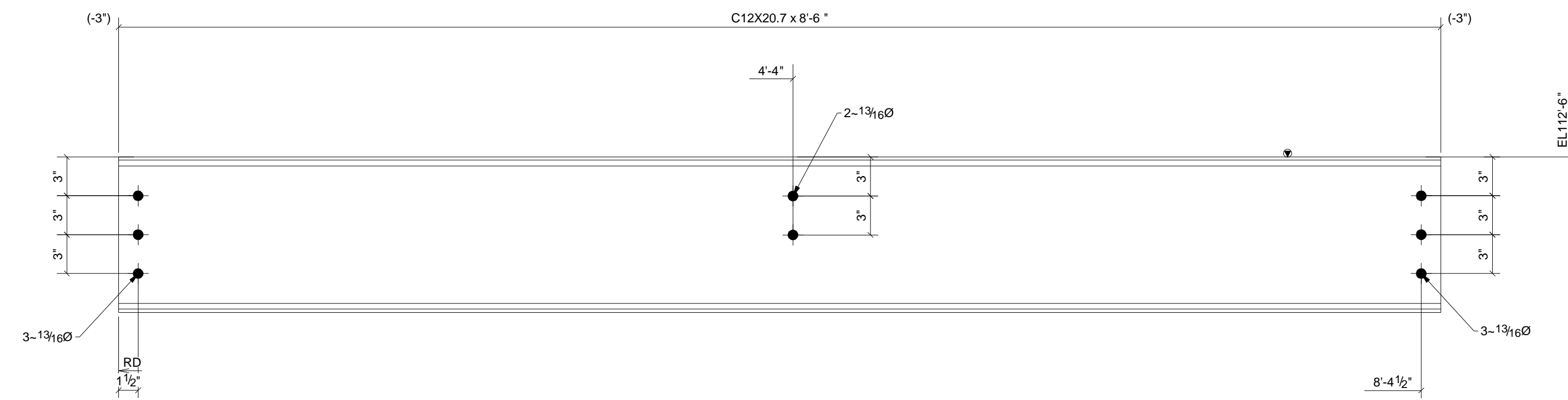


F - F  
E1

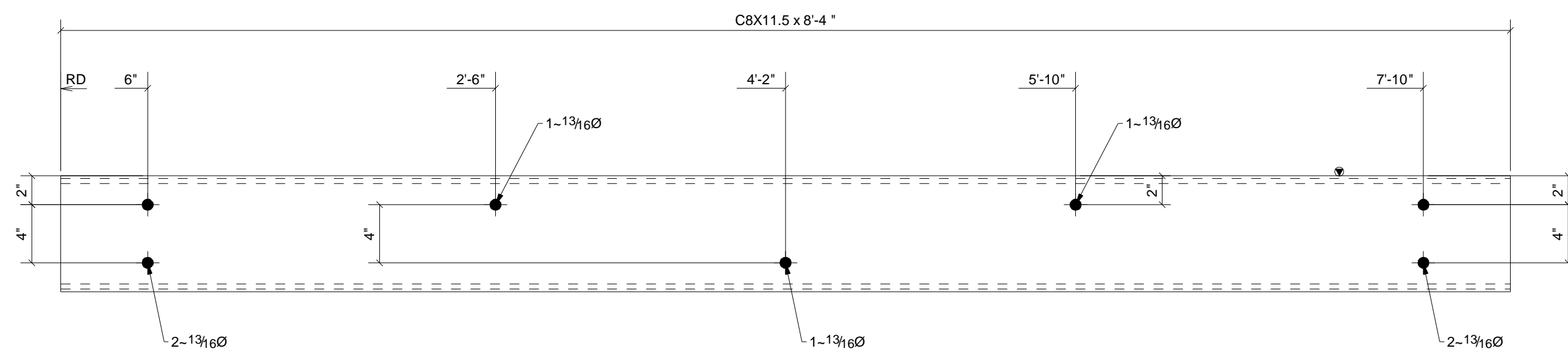
REV	DESCRIPTION	DATE
<b>METAL SOLUTIONS, INC</b> 6863 CR #60 WINDSOR, CO		
DESCRIPTION		PLAN @
PROJECT NAME		AURORA LANGUAGE CENTER
DRAWN BY		JOB No.
DATE DRAWN	03/05/2007	07.05
		DRG No.
		E2



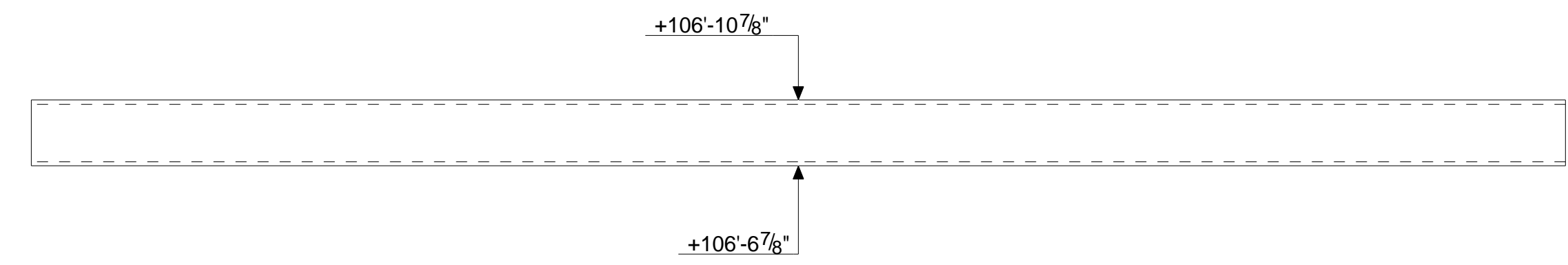
1 ~ 1A



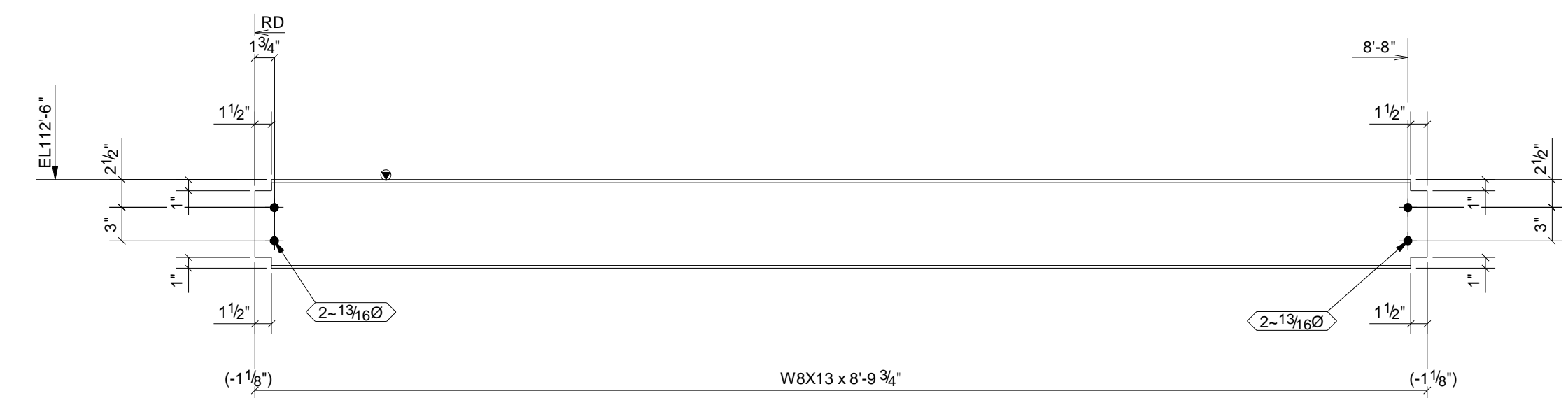
1 ~ 1B



1 ~ 1C



1 ~ 1D

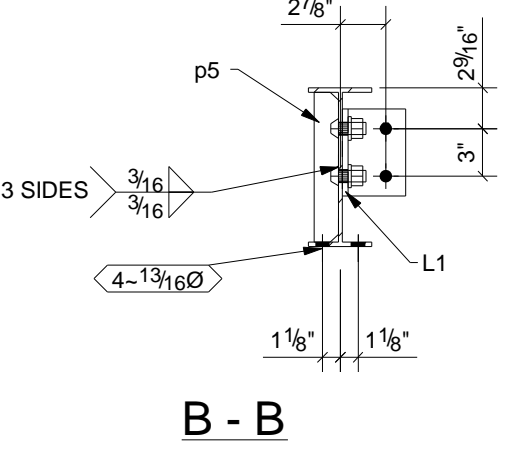
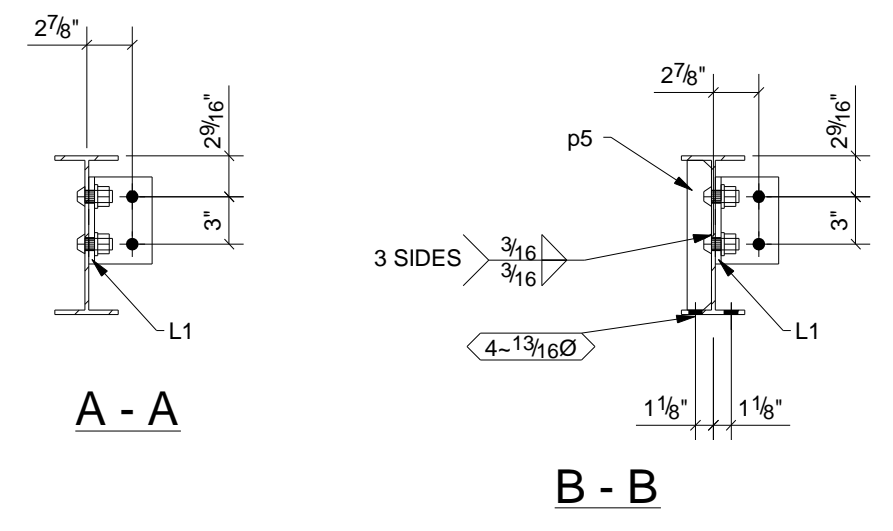
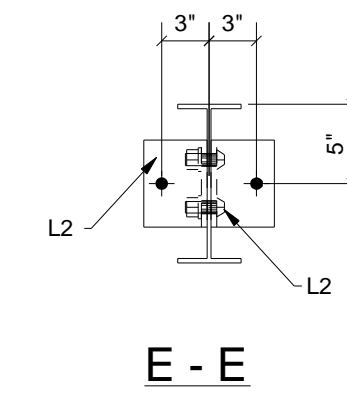
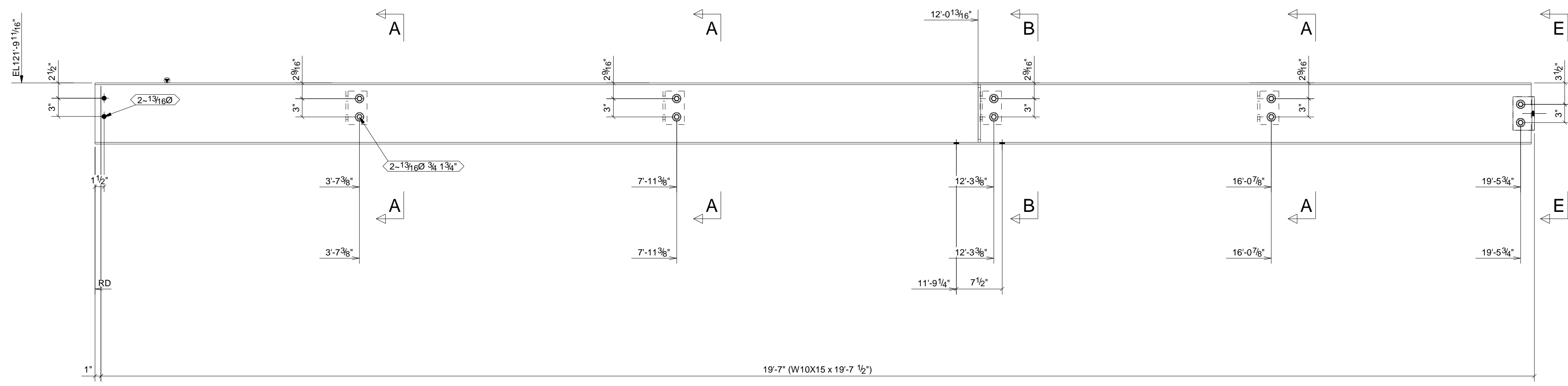


2 ~ 1E

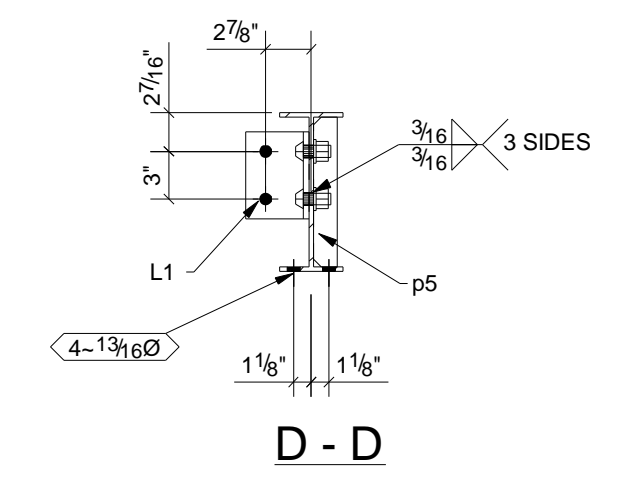
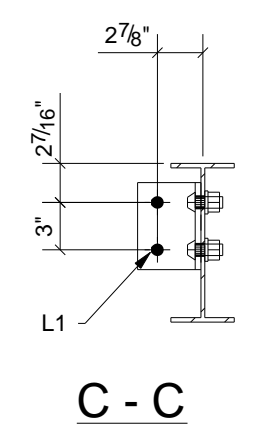
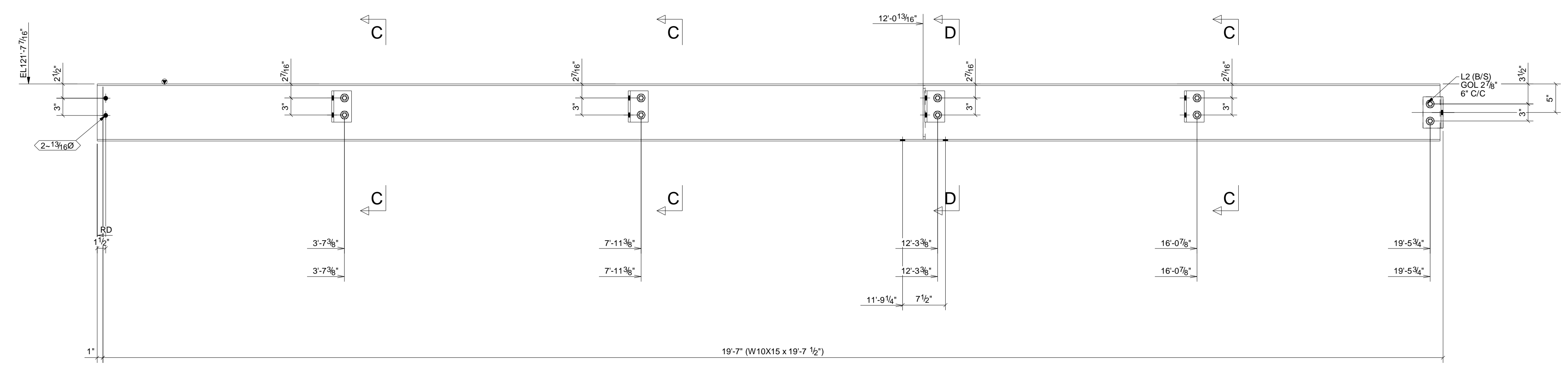
### BILL OF MATERIAL

MARK	QTY	DESCRIPTION	LENGTH	WEIGHT	REMARKS
1A	1				SQ-2
1A	1	C12X20.7	8'-7 15/16"	179	A36
a3	2	L3X3X1/4	1'-6 1/4"	15	A36
a7	2	L3X3X1/4	1'-7 13/16"	16	A36
1B	1				SQ-2
1B	1	C12X20.7	8'-6"	176	A36
1C	1				SQ-2
1C	1	C8X11.5	8'-4"	96	A36
1D	1				SQ-2
1D	1	HSS4X4X1/4	7'-11 1/8"	91	A36
1E	2				SQ-2
1E	2	W8X13	8'-9 3/4"	230	A992
TOTAL WEIGHT THIS DRAWING				803	

REV	DESCRIPTION	DATE
<b>METAL SOLUTIONS, INC</b> 6863 CR #60 WINDSOR, CO		
DESCRIPTION When using USWizard examples...		
PROJECT NAME AURORA LANGUAGE CENTER		
DRAWN BY	JOB No.	DRG No.
DATE DRAWN 03/05/2007	07.05	1



1 ~ 2A



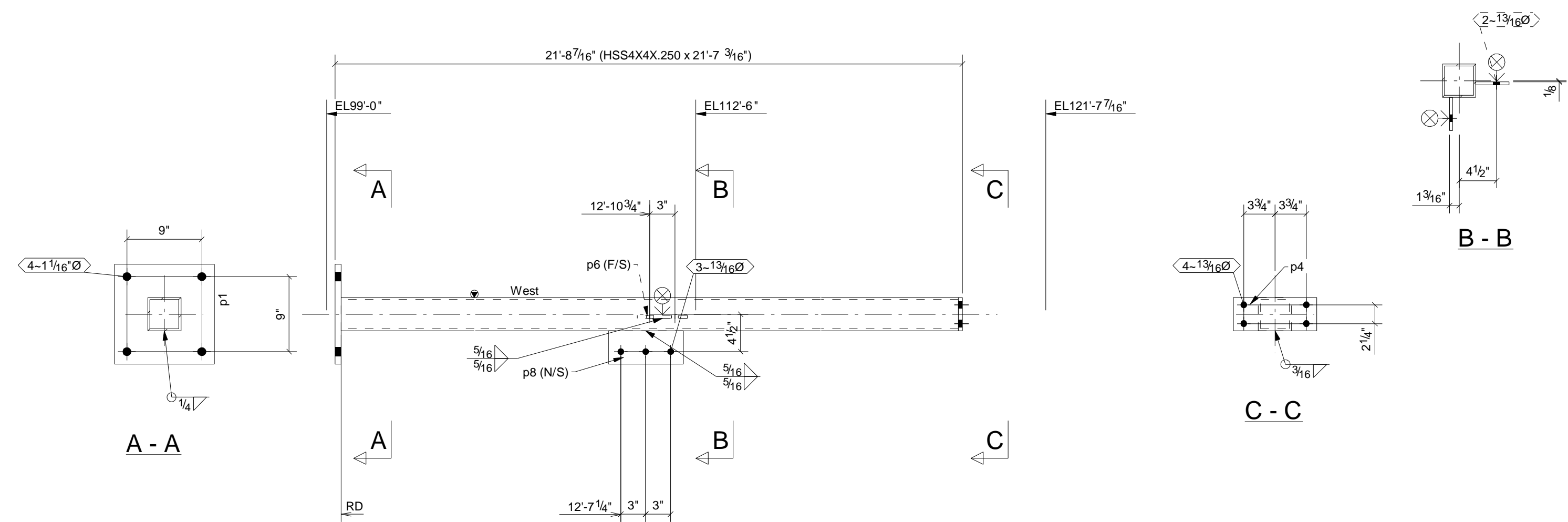
1 ~ 2B

**BILL OF MATERIAL**

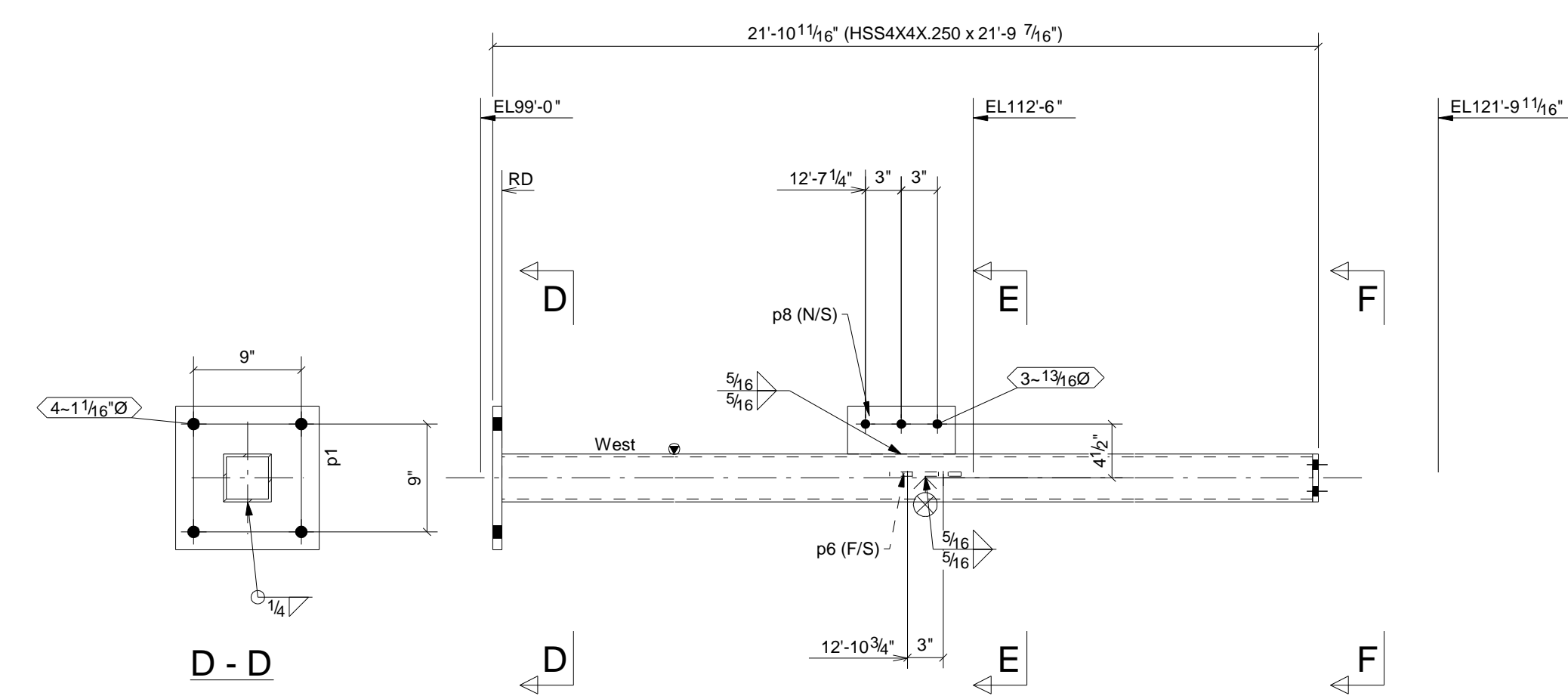
MARK	QTY	DESCRIPTION	LENGTH	WEIGHT	REMARKS
2A	1				SQ-2
2A	1	W10X15	19'-7 1/2"	295	A992
L1	4	L4X3-1/2X3/8	0'-5 1/2"	17	A36
L2	2	L4X3-1/2X3/8	0'-5 1/2"	8	A36
p5	1	PL3/8"X1 1/2"	0'-9 7/16"	1	A36
	8	3/40 A325N_TC BOLT	1 3/4"	4	
	2	3/40 A325N_TC BOLT	2"	1	
2B	1				SQ-2
2B	1	W10X15	19'-7 1/2"	295	A992
L1	4	L4X3-1/2X3/8	0'-5 1/2"	17	A36
L2	2	L4X3-1/2X3/8	0'-5 1/2"	8	A36
p5	1	PL3/8"X1 1/2"	0'-9 7/16"	1	A36
	8	3/40 A325N_TC BOLT	1 3/4"	4	
	2	3/40 A325N_TC BOLT	2"	1	
TOTAL WEIGHT THIS DRAWING				653	

REV	DESCRIPTION	DATE
<b>METAL SOLUTIONS, INC</b> 6863 CR #60 WINDSOR, CO		
DESCRIPTION When using USWizard examples...		
PROJECT NAME AURORA LANGUAGE CENTER		
DRAWN BY	JOB No. 07.05	DRG No. 2
DATE DRAWN 03/05/2007		

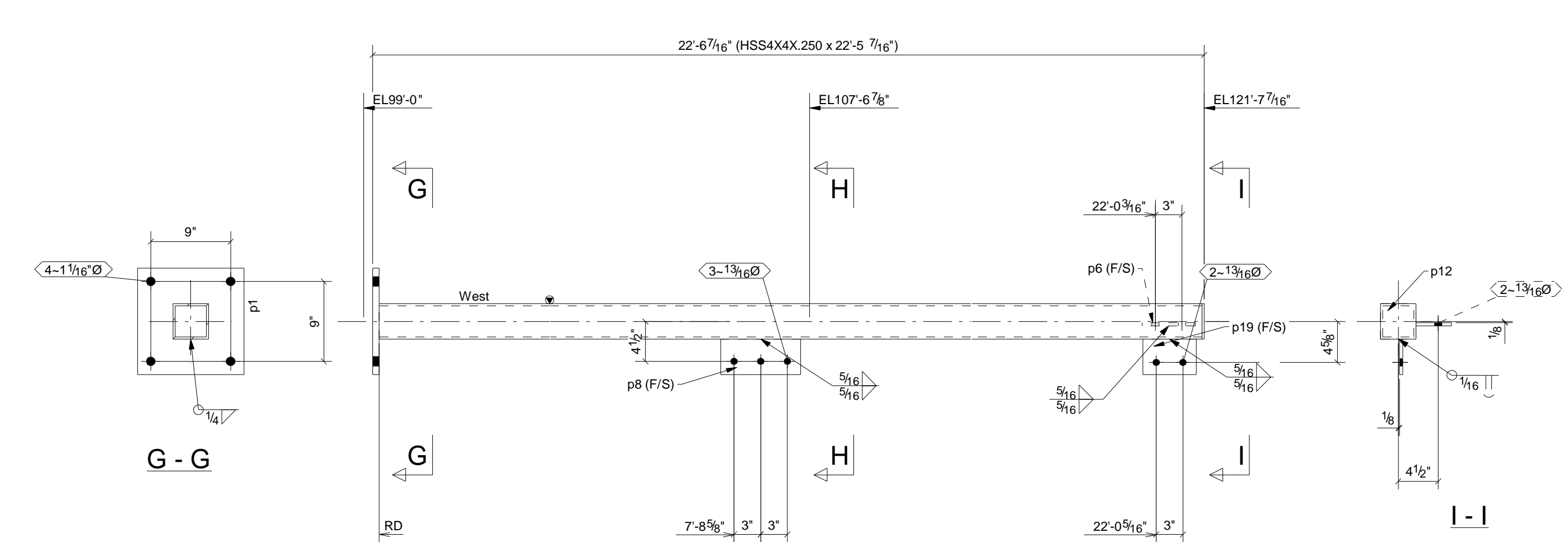




1 ~ 4A

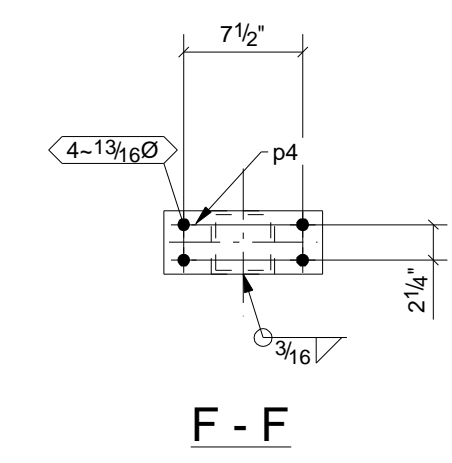
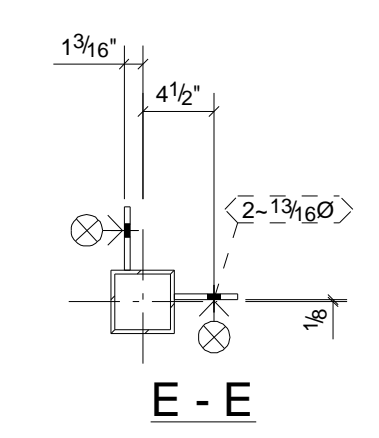


1 ~ 4B



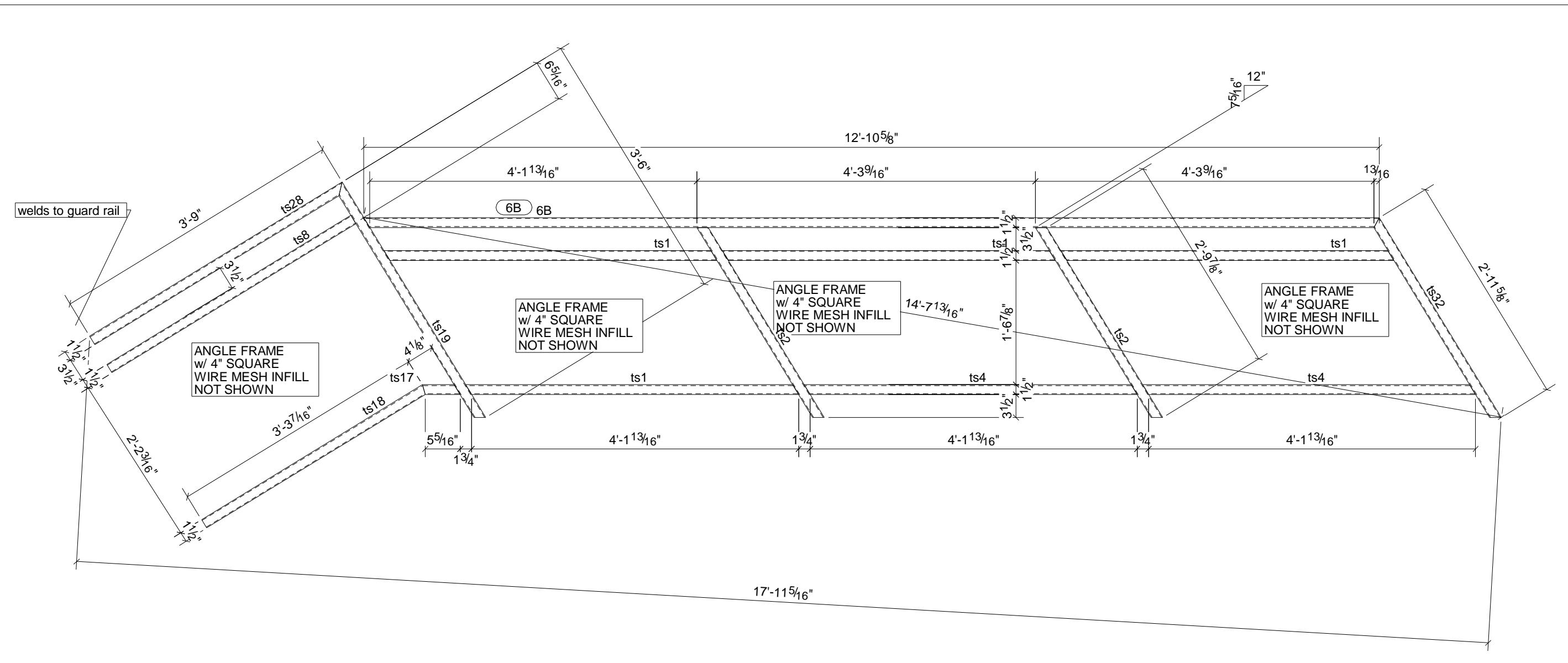
1 ~ 4C

BILL OF MATERIAL					
MARK	QTY	DESCRIPTION	LENGTH	WEIGHT	REMARKS
4A	1				SQ-2
4A	1	HSS4X4X.250	21'-7 3/16"	248	A500-GR.B
p1	1	PL3/4"X12"	1'-0"	31	A36
p4	1	PL1/2"X4"	0'-10"	6	A36
p6	1	PL3/8"X4"	0'-6"	3	A36
p8	1	PL3/8"X4"	0'-9"	4	A36
4B	1				SQ-2
4B	1	HSS4X4X.250	21'-9 7/16"	250	A500-GR.B
p1	1	PL3/4"X12"	1'-0"	31	A36
p4	1	PL1/2"X4"	0'-10"	6	A36
p6	1	PL3/8"X4"	0'-6"	3	A36
p8	1	PL3/8"X4"	0'-9"	4	A36
4C	1				SQ-2
4C	1	HSS4X4X.250	22'-5 7/16"	258	A500-GR.B
p1	1	PL3/4"X12"	1'-0"	31	A36
p6	1	PL3/8"X4"	0'-6"	3	A36
p8	1	PL3/8"X4"	0'-9"	4	A36
p12	1	PL1/4"X4"	0'-4"	1	A36
p19	1	PL3/8"X4"	0'-6"	3	A36
TOTAL WEIGHT THIS DRAWING				881	

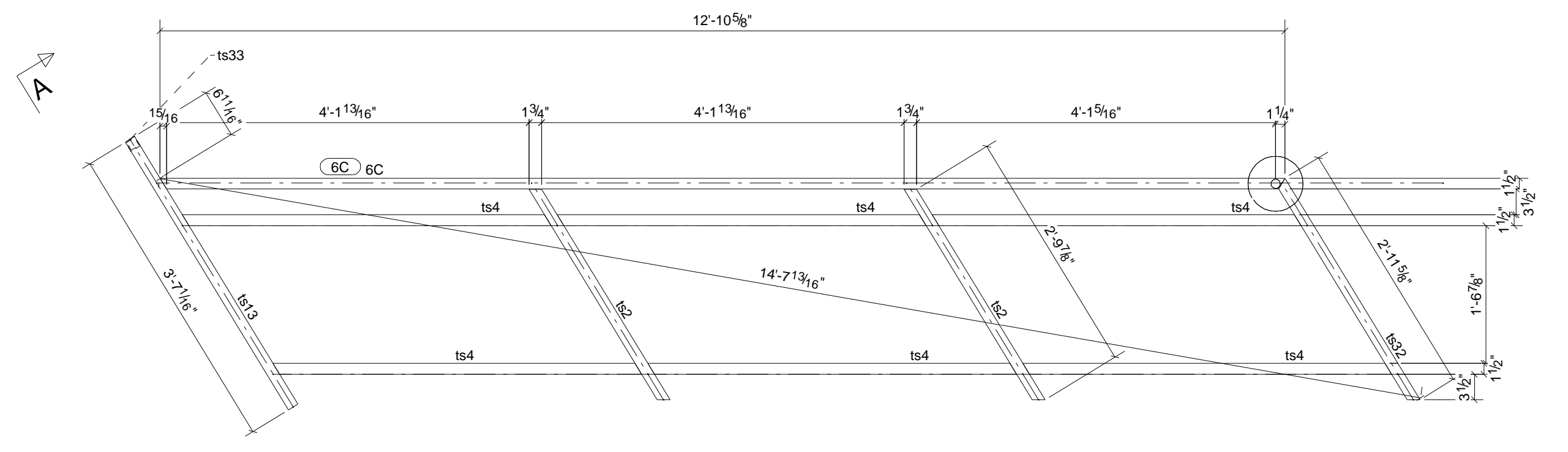


REV	DESCRIPTION	DATE
<b>METAL SOLUTIONS, INC</b> 6863 CR #60 WINDSOR, CO		
DESCRIPTION When using USWizard examples...		
PROJECT NAME AURORA LANGUAGE CENTER		
DRAWN BY	JOB No.	DRG No.
DATE DRAWN 03/05/2007	07.05	4

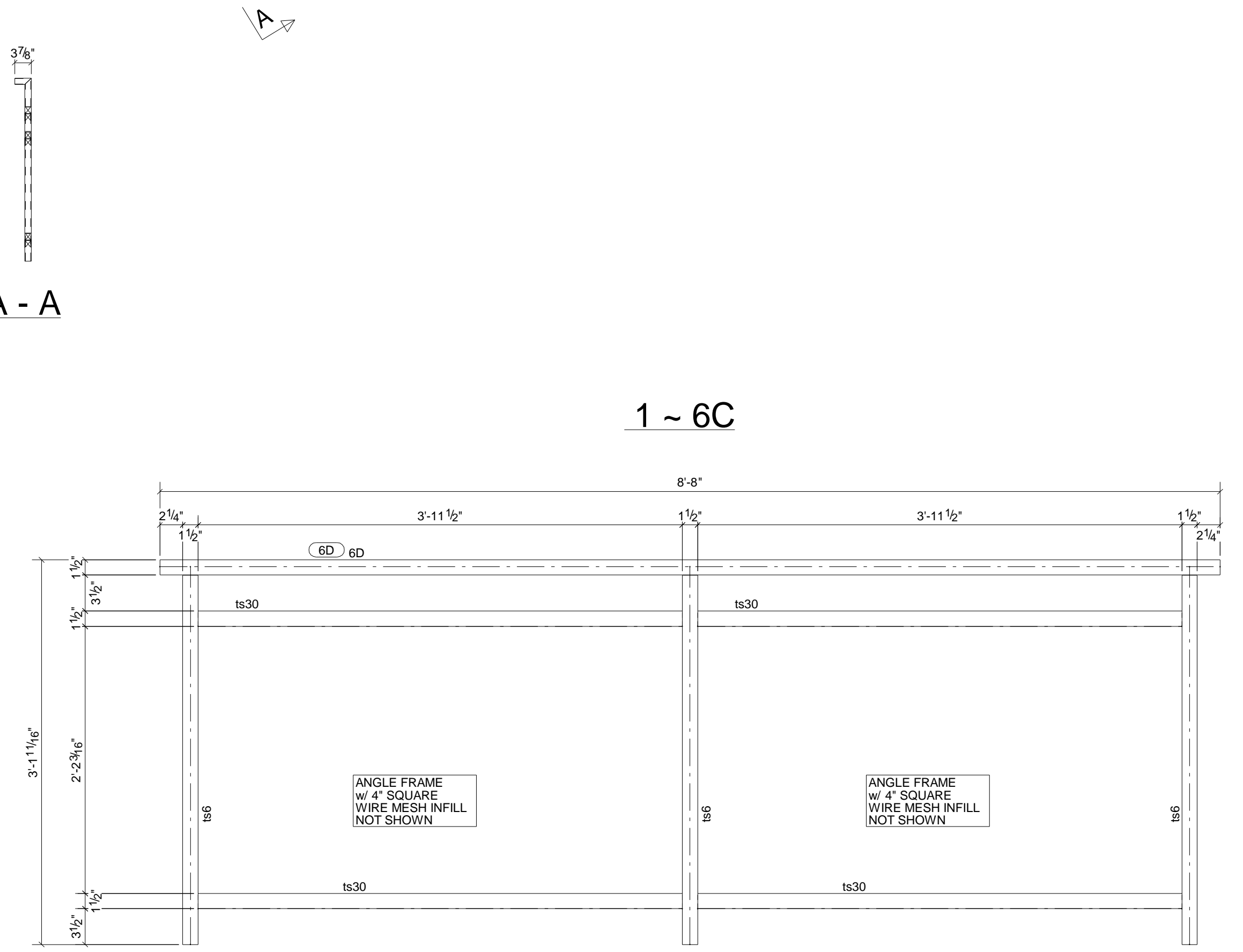




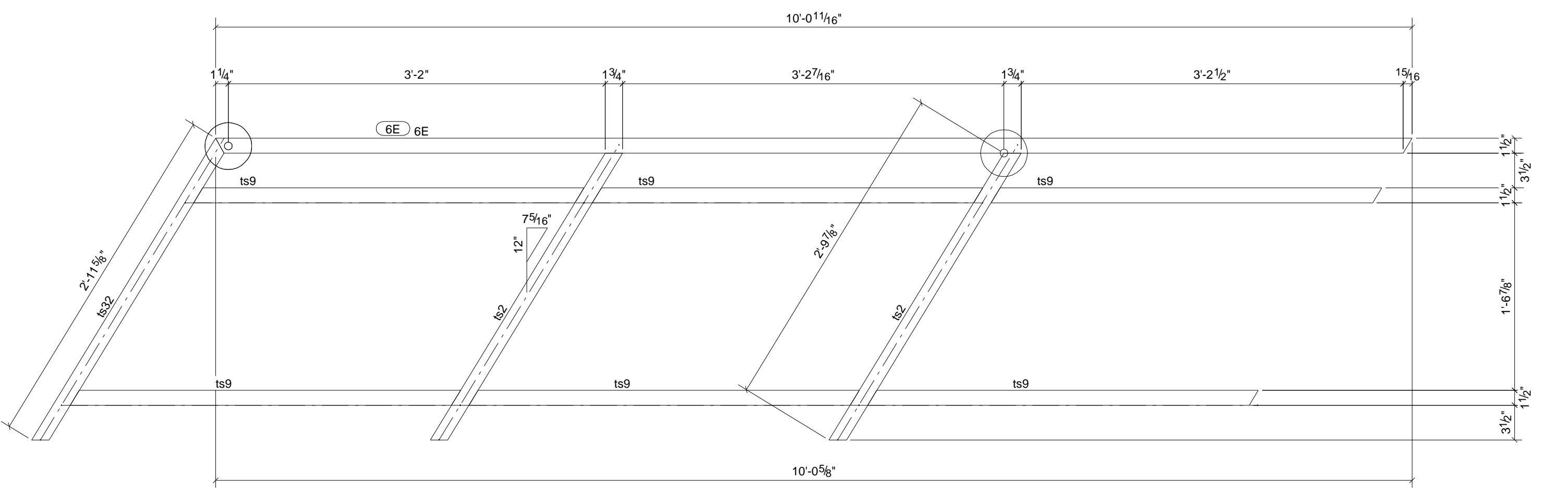
1 ~ 6B



1 ~ 6C



1 ~ 6D

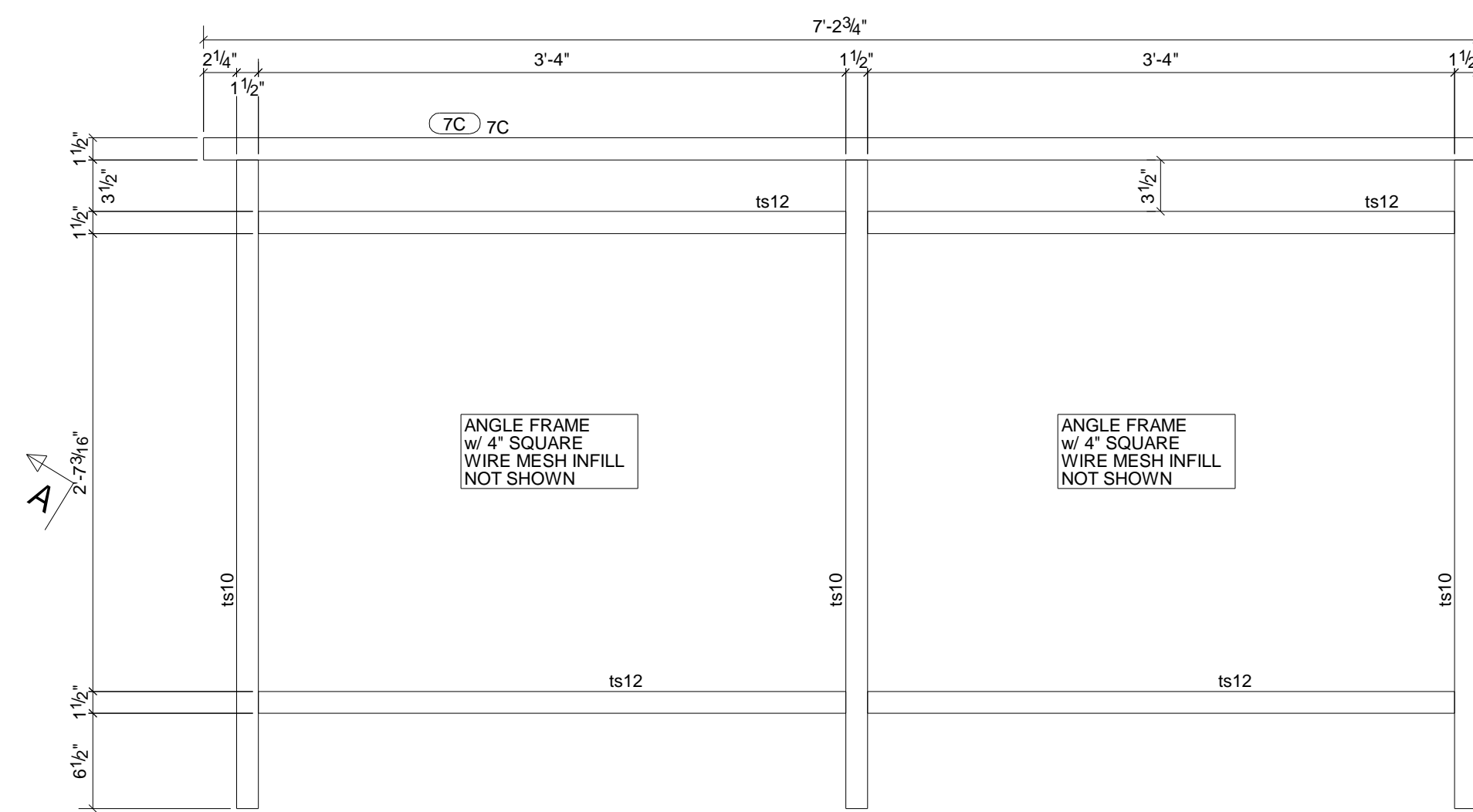
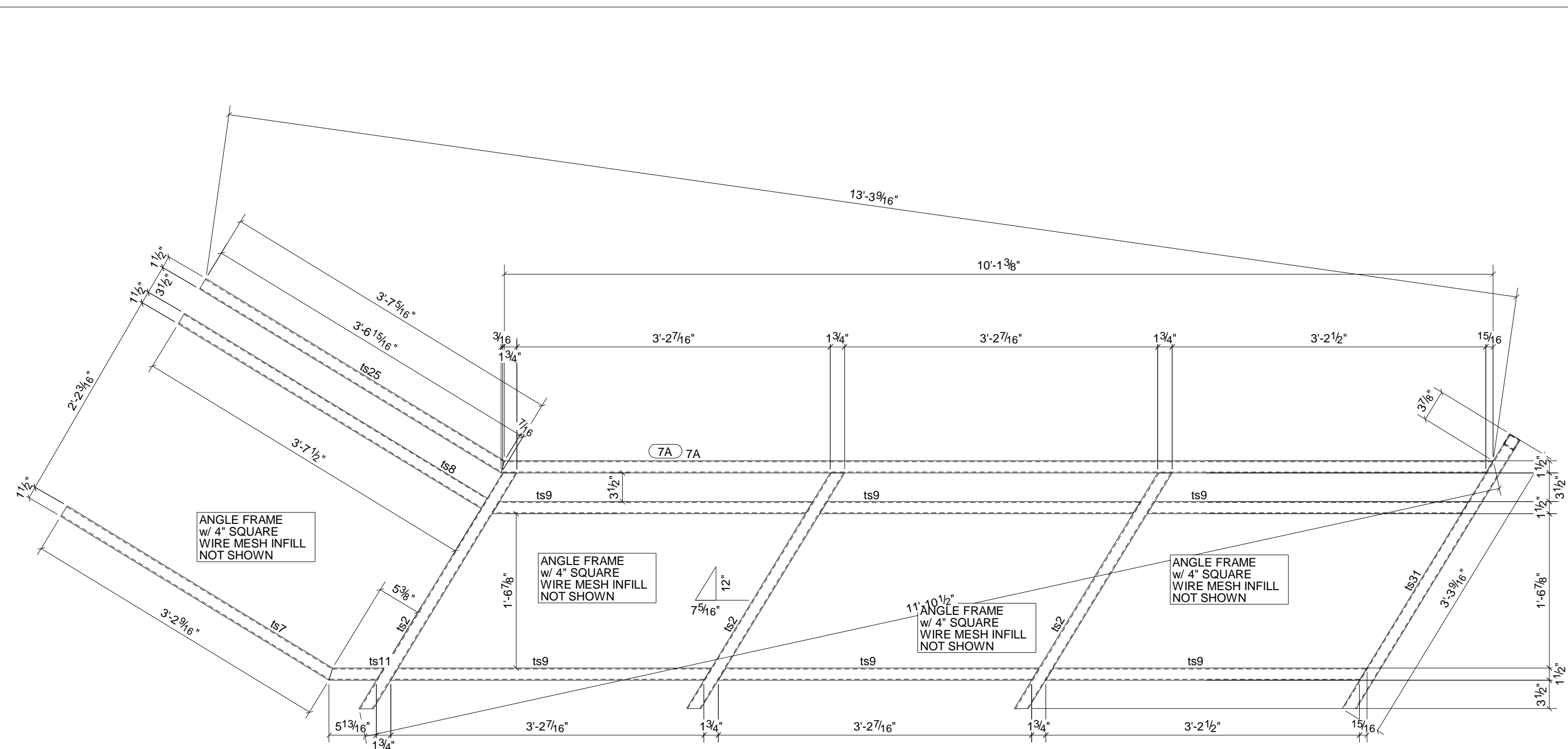


SHOP NOTE : CHANGE VERTICAL POSTS TO : TS 1 1/2 X 1 1/2 X 3/16" TYP FIELD WELD TO STRINGER W/ 3/16" FILLET

**BILL OF MATERIAL**

MARK	QTY	DESCRIPTION	LENGTH	WEIGHT	REMARKS
6B	1				SQ-2
ts1	4	TS1-1/2X1-1/2X1/8	12'-10 5/8"	27	A992
ts2	2	TS1-1/2X1-1/2X1/8	4'-2 11/16"	35	A992
ts4	2	TS1-1/2X1-1/2X1/8	2'-10 3/4"	12	A992
ts8	1	TS1-1/2X1-1/2X1/8	4'-2 11/16"	18	A992
ts17	1	TS1-1/2X1-1/2X1/8	3'-7 1/2"	8	A992
ts18	1	TS1-1/2X1-1/2X1/8	0'-5 3/4"	1	A992
ts19	1	TS1-1/2X1-1/2X1/8	3'-3 7/16"	7	A992
ts28	1	TS1-1/2X1-1/2X1/8	3'-6"	7	A992
ts32	1	TS1-1/2X1-1/2X1/8	3'-9"	8	A992
ts32	1	TS1-1/2X1-1/2X1/8	2'-11 5/8"	6	A992
6C	1				SQ-2
6C	1	TS1-1/2X1-1/2X1/8	12'-10 5/8"	27	A992
ts2	2	TS1-1/2X1-1/2X1/8	2'-10 3/4"	12	A992
ts4	6	TS1-1/2X1-1/2X1/8	4'-2 11/16"	53	A992
ts13	1	TS1-1/2X1-1/2X1/8	3'-7 1/16"	7	A992
ts32	1	TS1-1/2X1-1/2X1/8	2'-11 5/8"	6	A992
ts33	1	TS1-1/2X1-1/2X1/8	0'-3 7/8"	1	A992
6D	1				SQ-2
6D	1	TS1-1/2X1-1/2X1/8	8'-8"	18	A992
ts6	3	TS1-1/2X1-1/2X1/8	3'-0 3/16"	19	A992
ts30	4	TS1-1/2X1-1/2X1/8	3'-11 1/2"	33	A992
6E	1				SQ-2
6E	1	TS1-1/2X1-1/2X1/8	10'-0 5/8"	21	A992
ts2	2	TS1-1/2X1-1/2X1/8	2'-10 3/4"	12	A992
ts9	6	TS1-1/2X1-1/2X1/8	3'-3 3/8"	41	A992
ts32	1	TS1-1/2X1-1/2X1/8	2'-11 5/8"	6	A992
TOTAL WEIGHT THIS DRAWING				383	

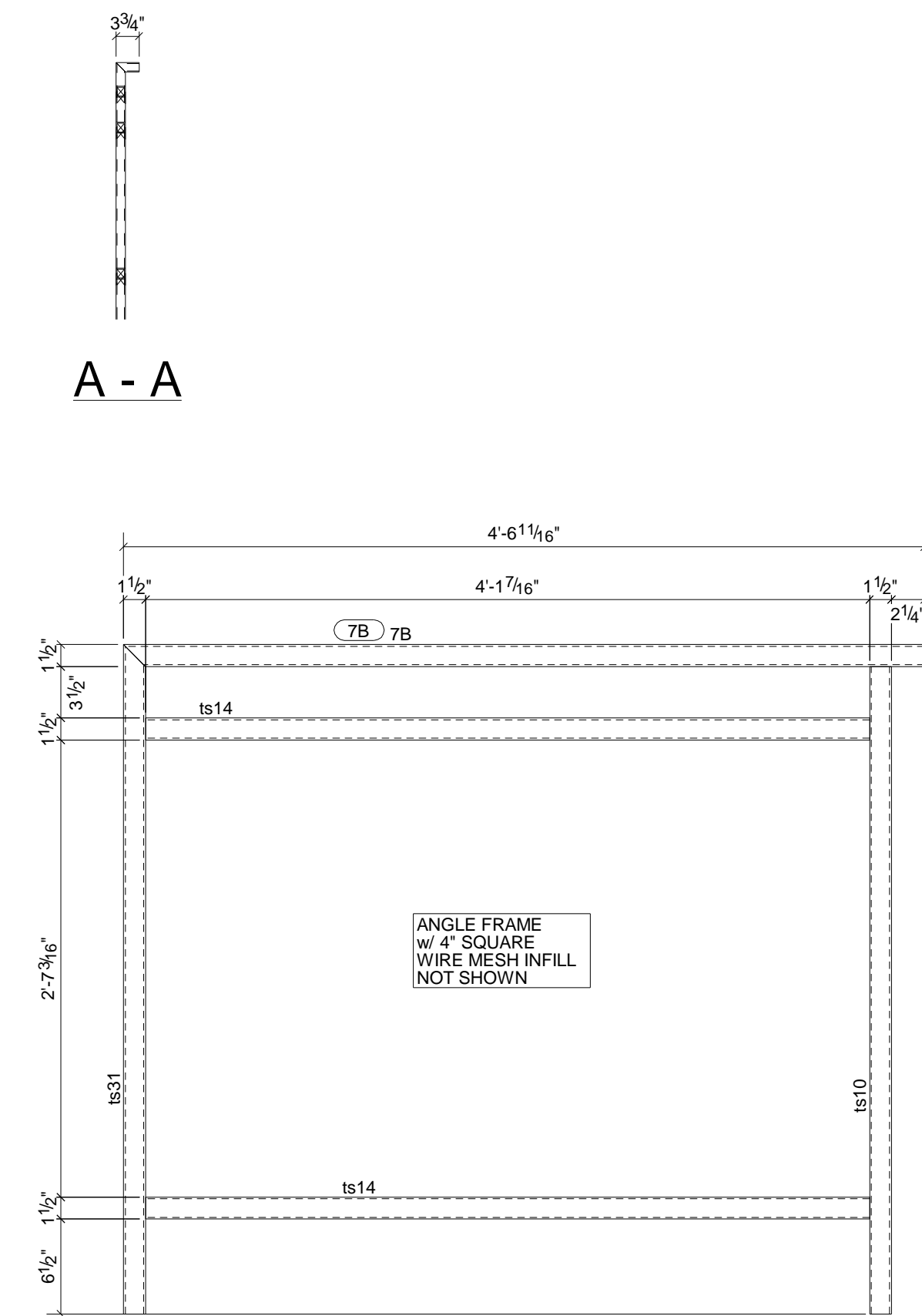
REV	DESCRIPTION	DATE
<b>METAL SOLUTIONS, INC</b> 6863 CR #60 WINDSOR, CO		
DESCRIPTION When using USWizard examples...		
PROJECT NAME AURORA LANGUAGE CENTER		
DRAWN BY	JOB No.	DRG No.
DATE DRAWN 03/05/2007	07.05	6



2 ~ 7C

A - A

1 ~ 7A



1 ~ 7B

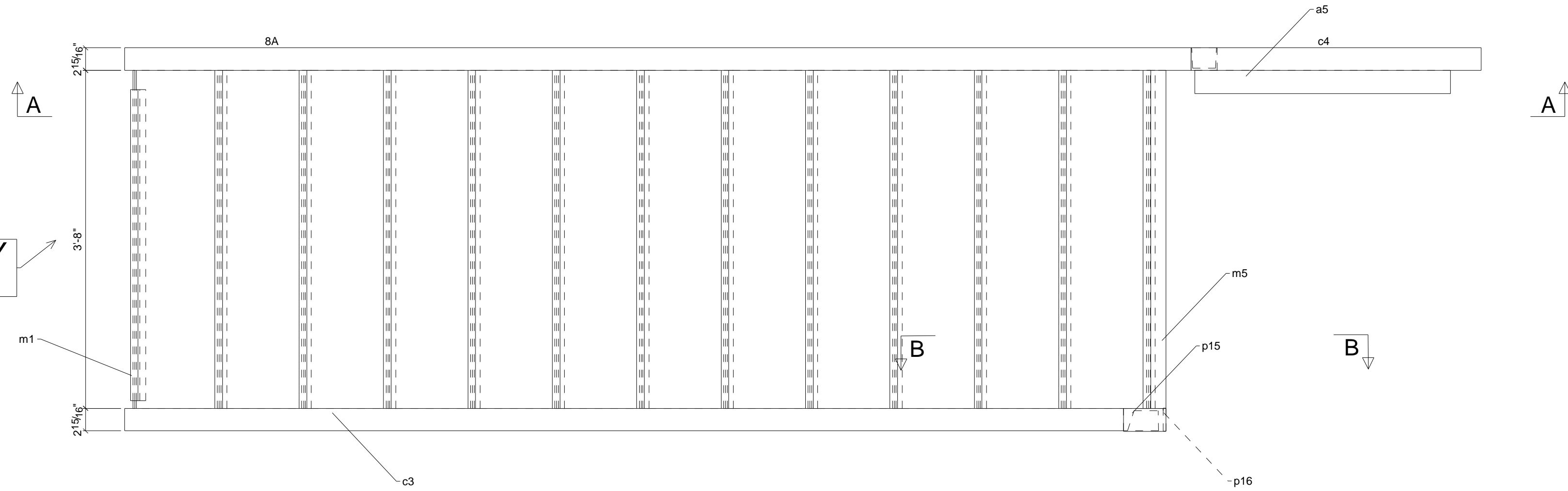
SHOP NOTE : CHANGE VERTICAL POSTS  
TO : TS 1 1/2 X 1 1/2 X 3/16" TYP  
FIELD WELD TO STRINGER W/ 3/16" FILLET

**BILL OF MATERIAL**

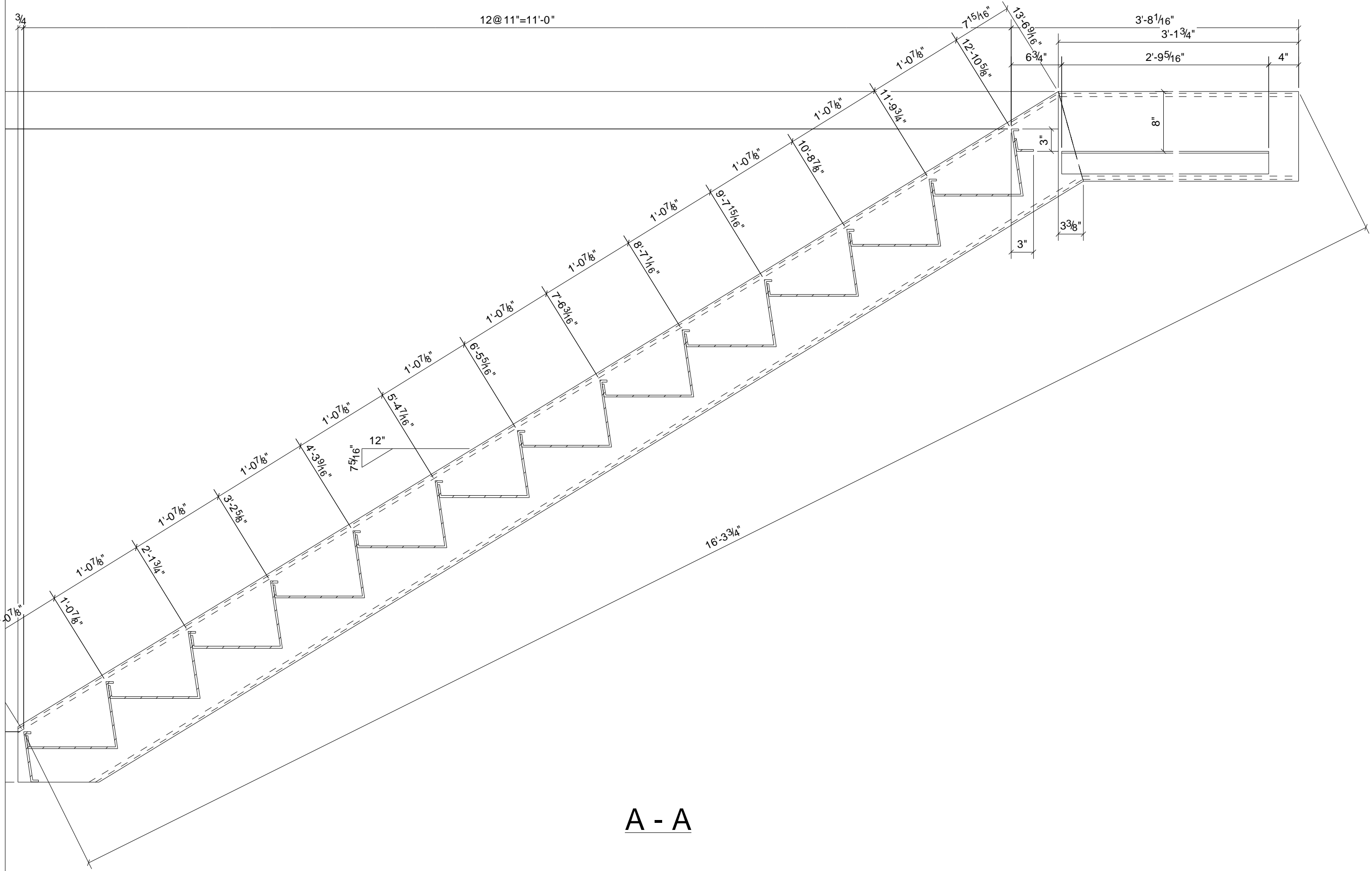
MARK	QTY	DESCRIPTION	LENGTH	WEIGHT	REMARKS
7A	1				SQ-2
ts2	3	TS1-1/2X1-1/2X1/8	10'-1 13/16"	21	A992
ts7	1	TS1-1/2X1-1/2X1/8	2'-10 3/4"	18	A992
ts8	1	TS1-1/2X1-1/2X1/8	3'-2 9/16"	7	A992
ts9	6	TS1-1/2X1-1/2X1/8	3'-7 1/2"	8	A992
ts11	1	TS1-1/2X1-1/2X1/8	3'-3 3/8"	41	A992
ts21	1	TS1-1/2X1-1/2X1/8	0'-6 3/4"	1	A992
ts25	1	TS1-1/2X1-1/2X1/8	0'-3 3/4"	1	A992
ts31	1	TS1-1/2X1-1/2X1/8	3'-7 5/16"	7	A992
			3'-9 11/16"	8	A992
7B	1				SQ-2
7B	1	TS1-1/2X1-1/2X1/8	4'-6 11/16"	9	A992
ts10	1	TS1-1/2X1-1/2X1/8	3'-8 1/8"	8	A992
ts14	2	TS1-1/2X1-1/2X1/8	4'-1 7/16"	17	A992
ts31	1	TS1-1/2X1-1/2X1/8	3'-9 11/16"	8	A992
7C	2				SQ-2
7C	2	TS1-1/2X1-1/2X1/8	7'-2 3/4"	30	A992
ts10	6	TS1-1/2X1-1/2X1/8	3'-8 1/8"	46	A992
ts12	8	TS1-1/2X1-1/2X1/8	3'-4"	55	A992
TOTAL WEIGHT THIS DRAWING				285	

REV	DESCRIPTION	DATE
<b>METAL SOLUTIONS, INC</b> 6863 CR #60 WINDSOR, CO		
DESCRIPTION When using USWizard examples...		
PROJECT NAME AURORA LANGUAGE CENTER		
DRAWN BY	JOB No.	DRG No.
DATE DRAWN 03/05/2007	07.05	7

APPROVER VERIFY STAIR WIDTH

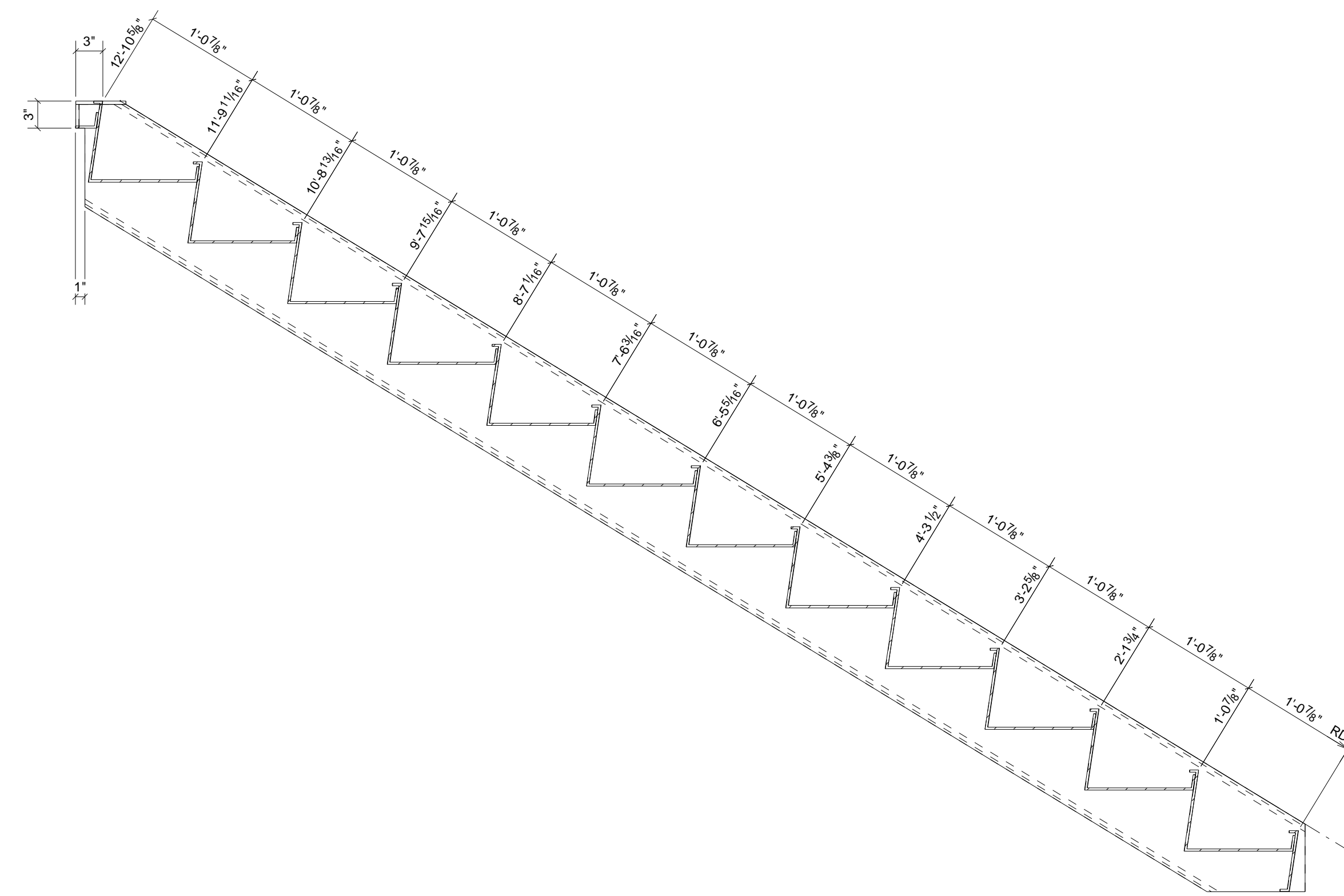


BILL OF MATERIAL					
MARK	QTY	DESCRIPTION	LENGTH	WEIGHT	REMARKS
8A	1				SQ-2
a5	1	C12X20.7	13'-10 3/4"	287	A36
c3	1	L3X3X1/4	2'-9 5/16"	14	A36
c4	1	C12X20.7	13'-4 13/16"	277	A36
m1	1	PL1/4"X7 3/4"	3'-1 3/4"	65	A36
m4	12	PL1/4"X22 1/4"	3'-8"	862	A36
m5	1	PL1/4"X3 9/16"	3'-8"	12	A36
p15	1	PL3/8"X3"	0'-5 9/16"	2	A36
p16	1	BAR3/8"X2 5/8"	0'-3"	1	A36
TOTAL WEIGHT THIS DRAWING				1543	



A - A

1 ~ 8A



B - B

REV	DESCRIPTION	DATE
<b>METAL SOLUTIONS, INC</b> 6863 CR #60 WINDSOR, CO		
DESCRIPTION When using USWizard examples...		
PROJECT NAME AURORA LANGUAGE CENTER		
DRAWN BY		JOB No. 07.05
DATE DRAWN	03/05/2007	DRG No. 8

