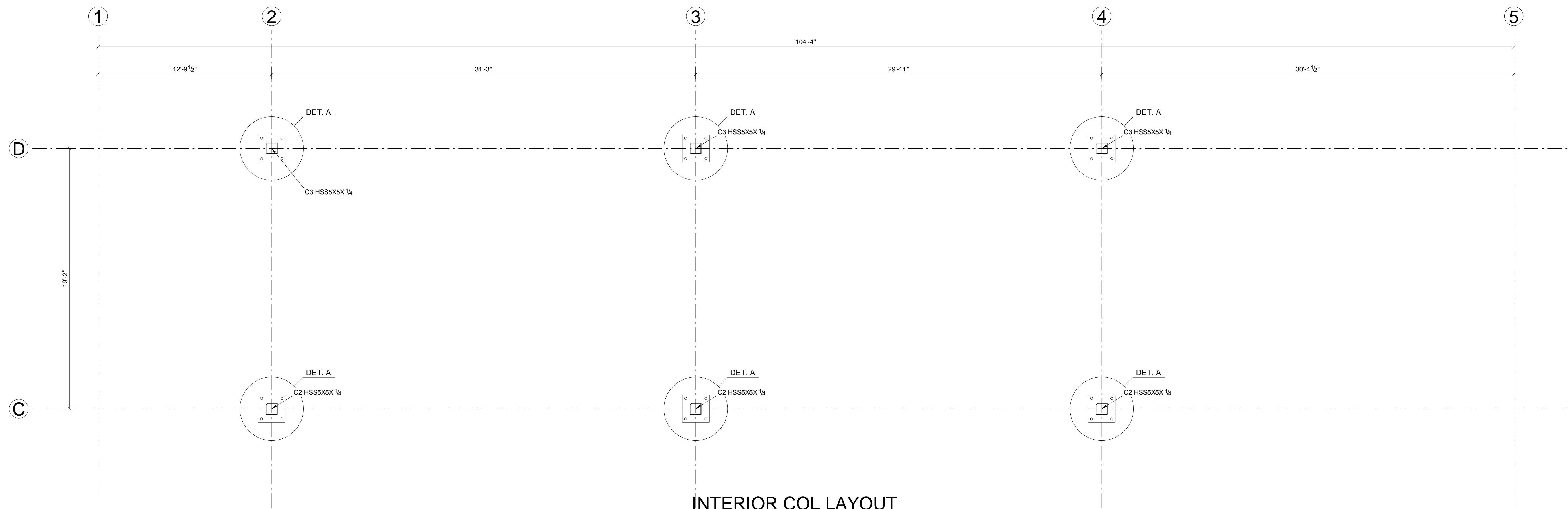


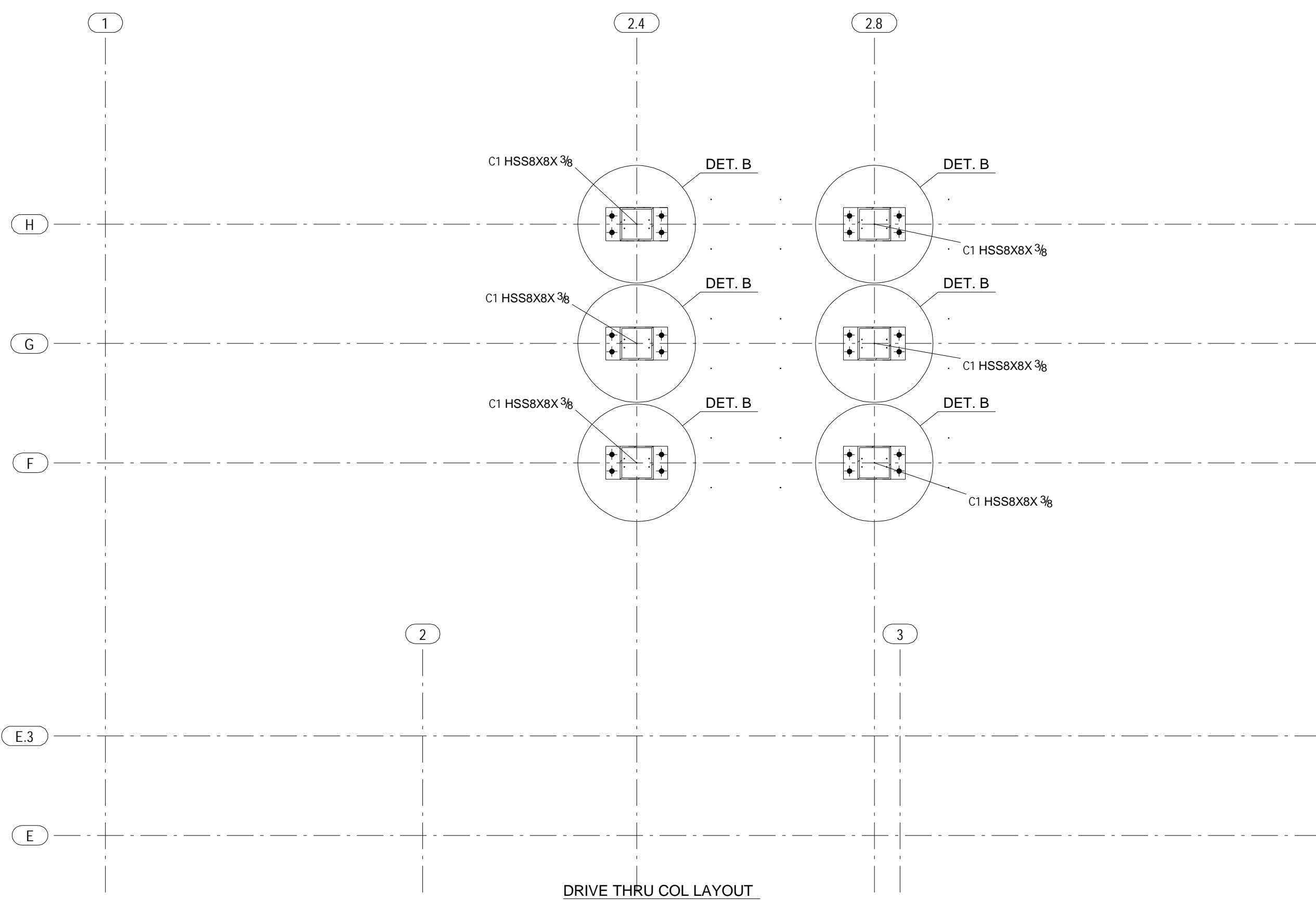
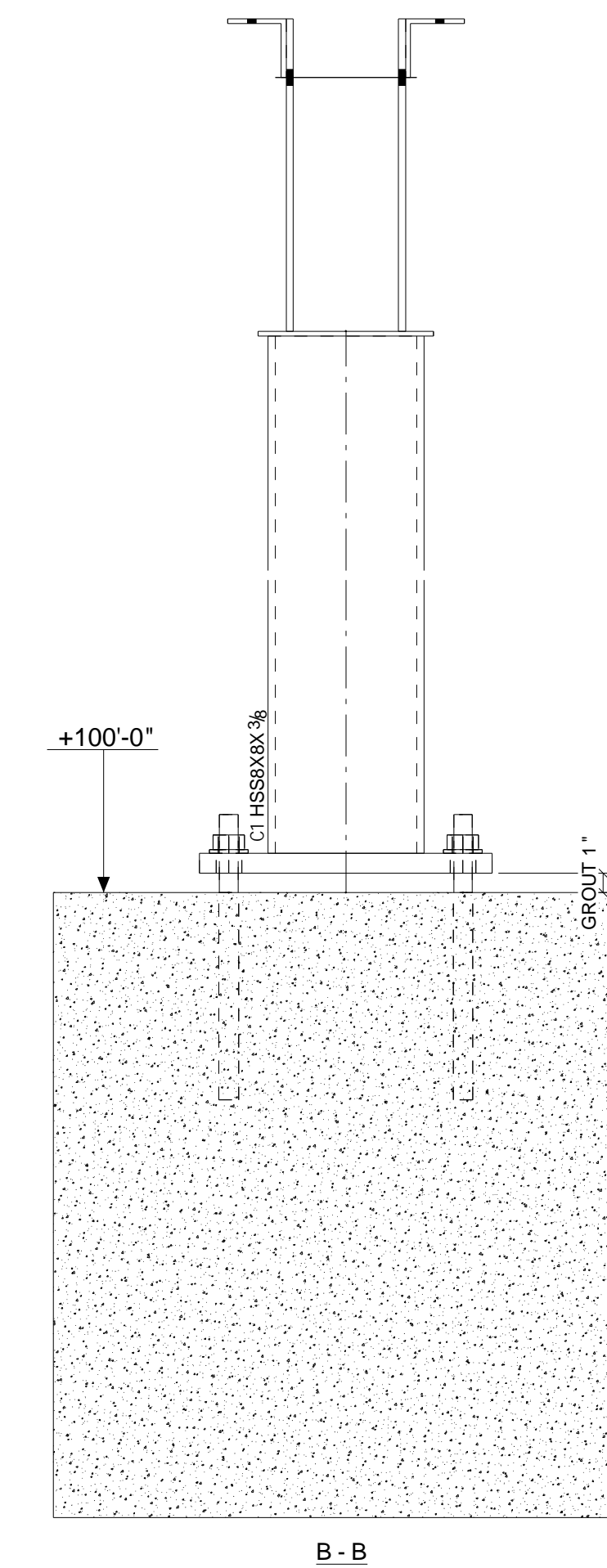
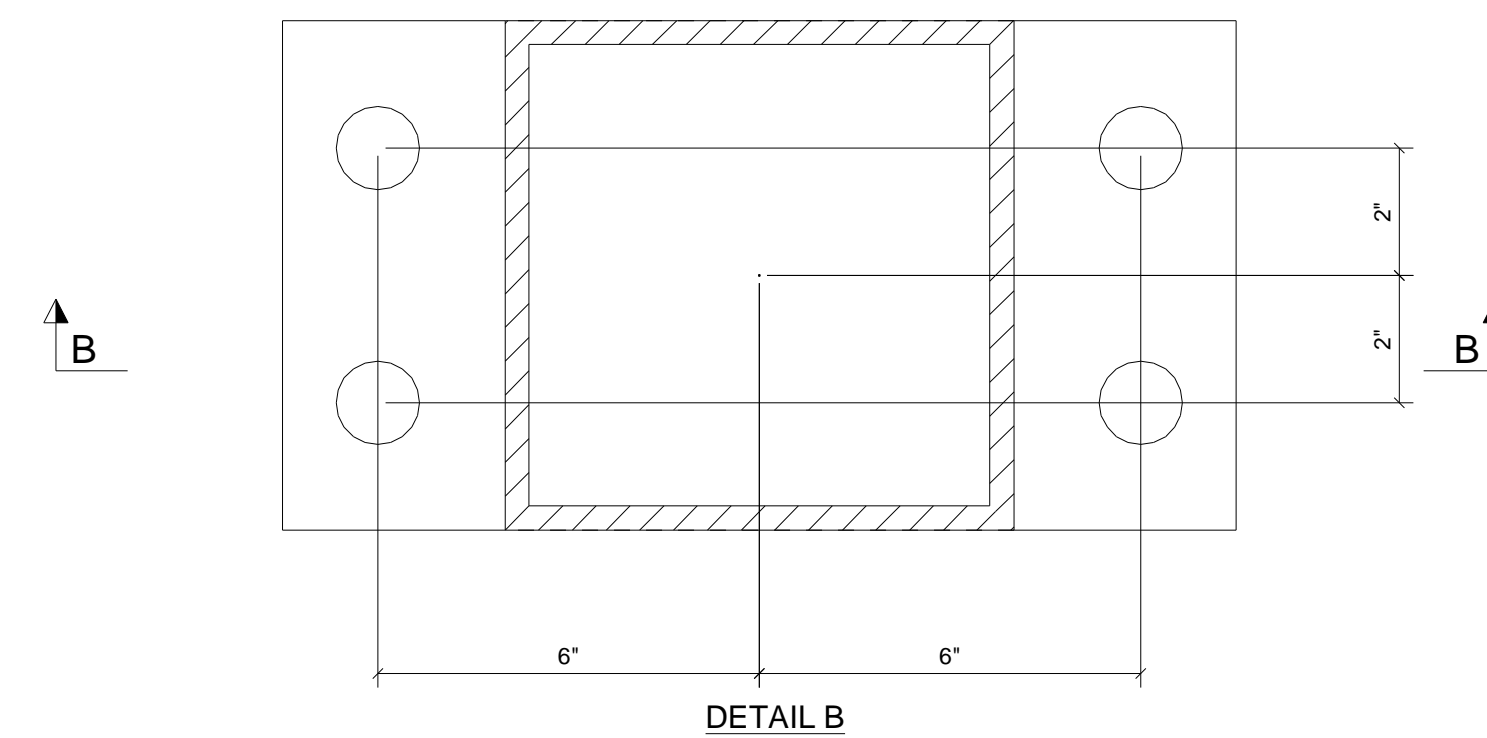
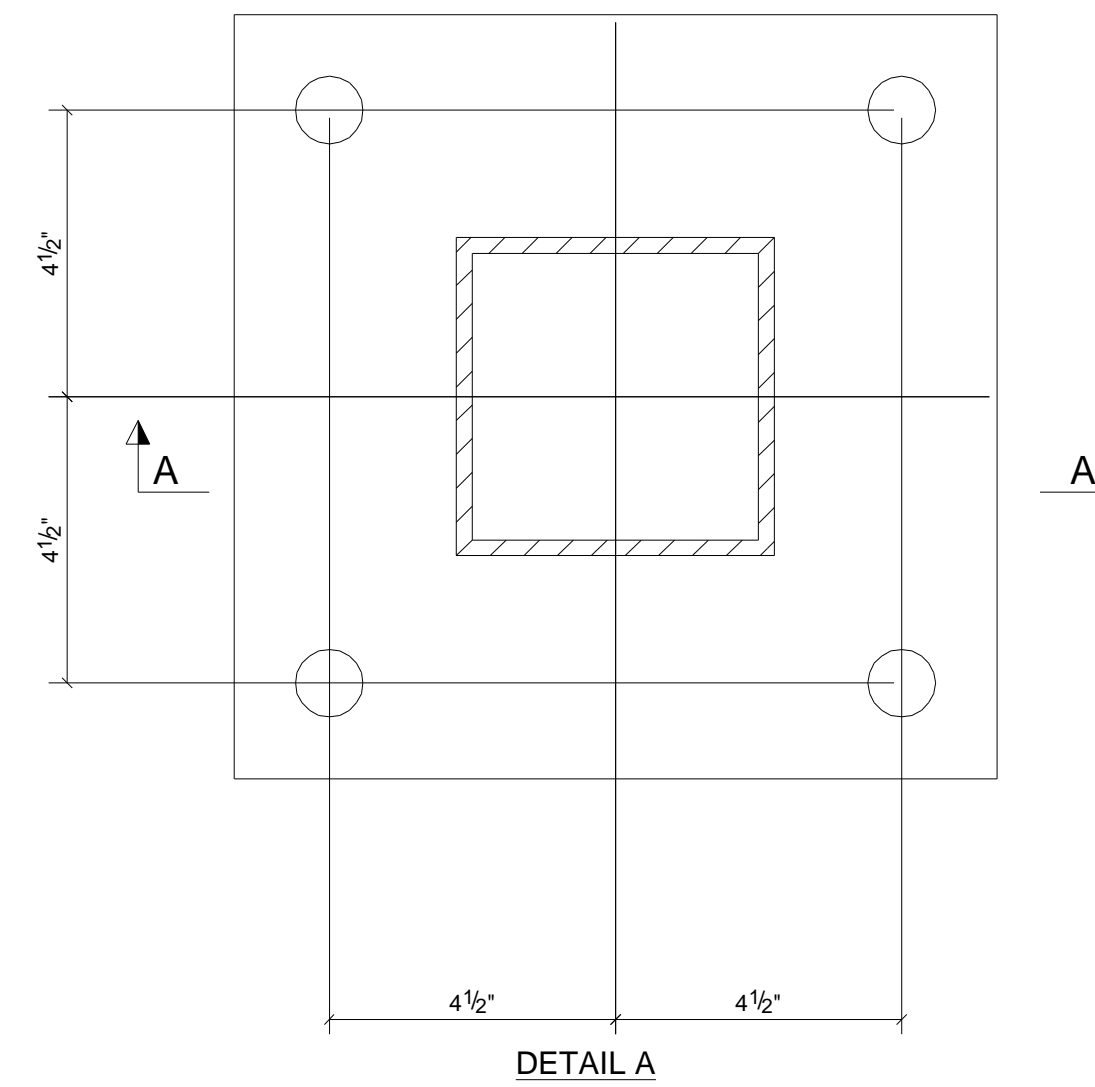
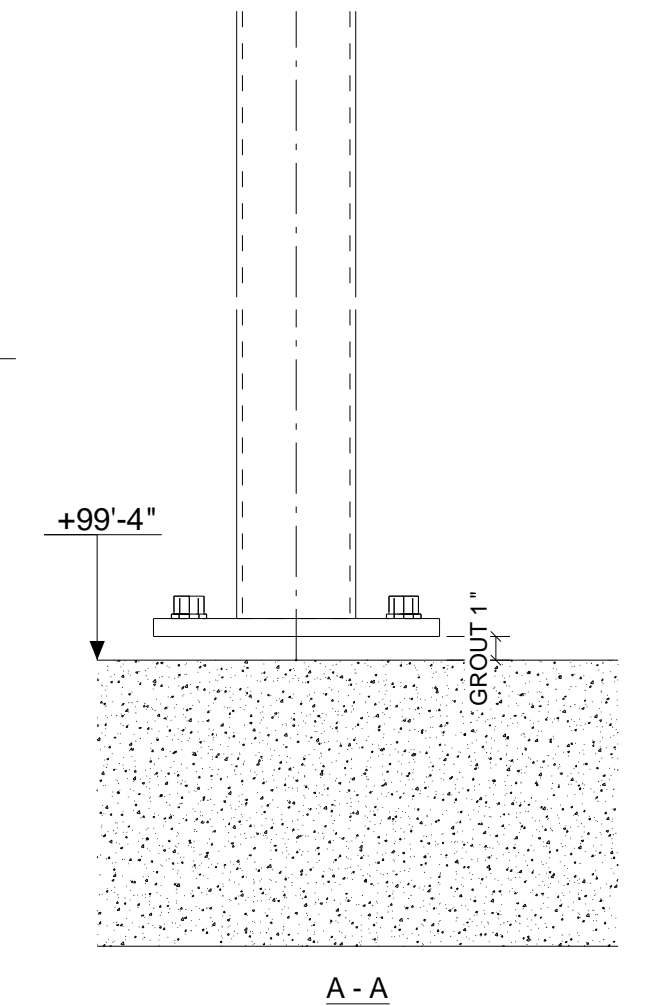
STEEL ASTM	A992, A500, A36	UNO	PROJECT NAME	US BANK
ELECTRODES	70xx	UNO	LOCATION	2534 JOHNSTOWN, CO
WELDS	3/16" MIN.	UNO	CONTRACTOR	DRAHOTA
OPEN HOLES	13/16" DIA	UNO	ARCHITECT	Arch
BOLTS	A325N-TC	UNO		
PAINT	HS88 RED	UNO		

<b>METAL SOLUTIONS, INC</b>	
WINDSOR, CO	
970-674-9234 FAX 970-674-9121 www.metalsolutions.com	
DATE	JOB No.
5/4/09/2008	819
DRAWN BY	DRG No.
	3D

DATE	NO.	DESCRIPTION	BY



INTERIOR COL LAYOUT



DRIVE THRU COL LAYOUT

PLACEMENT NOTES:

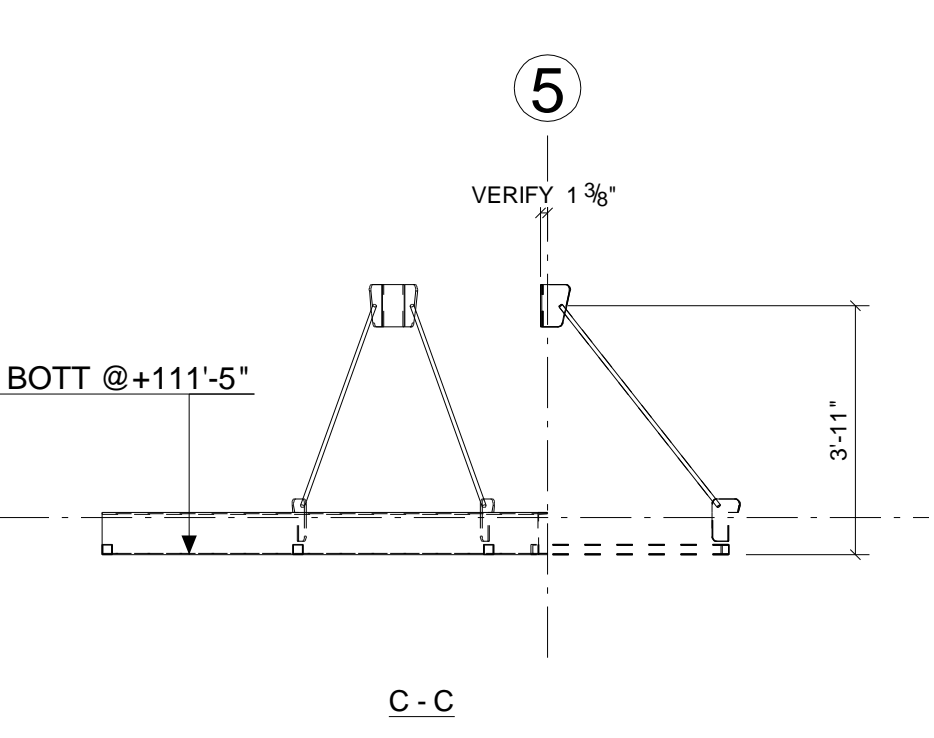
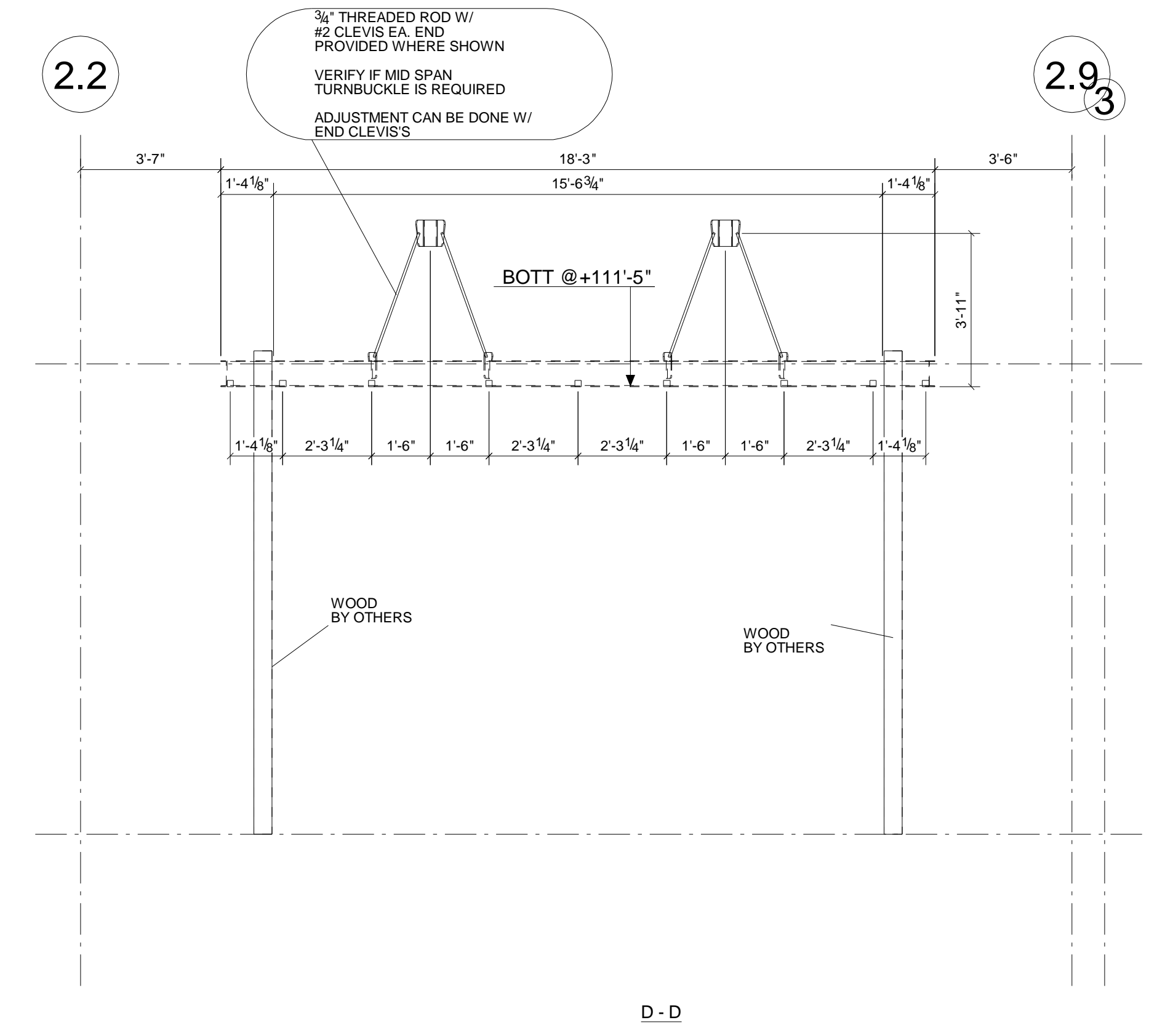
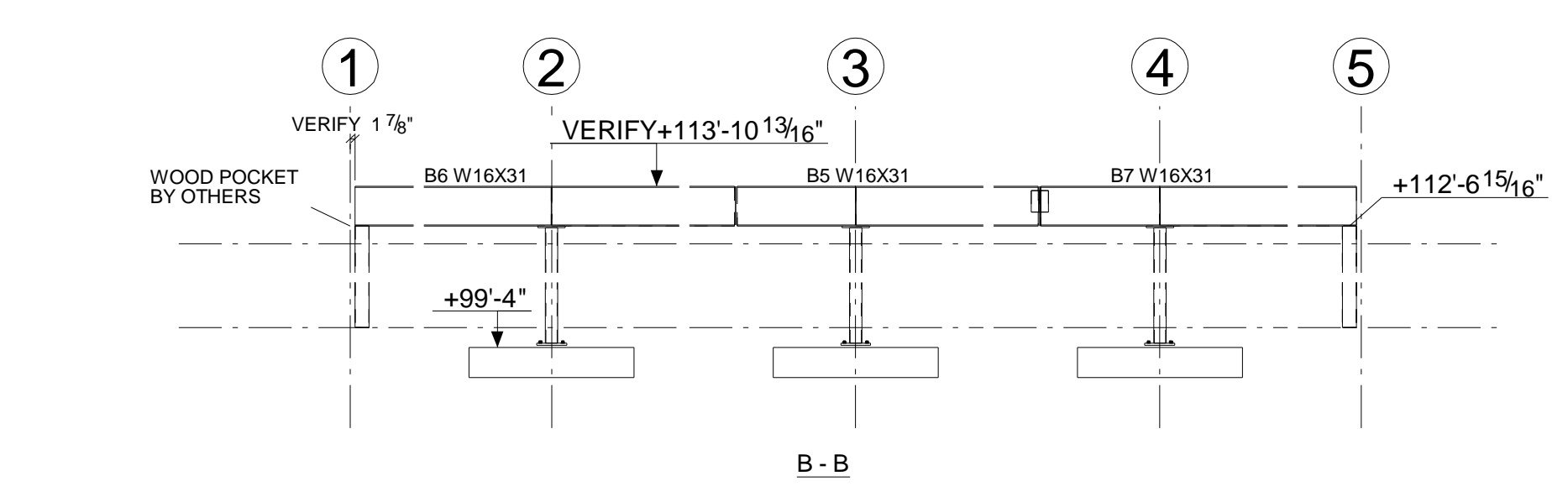
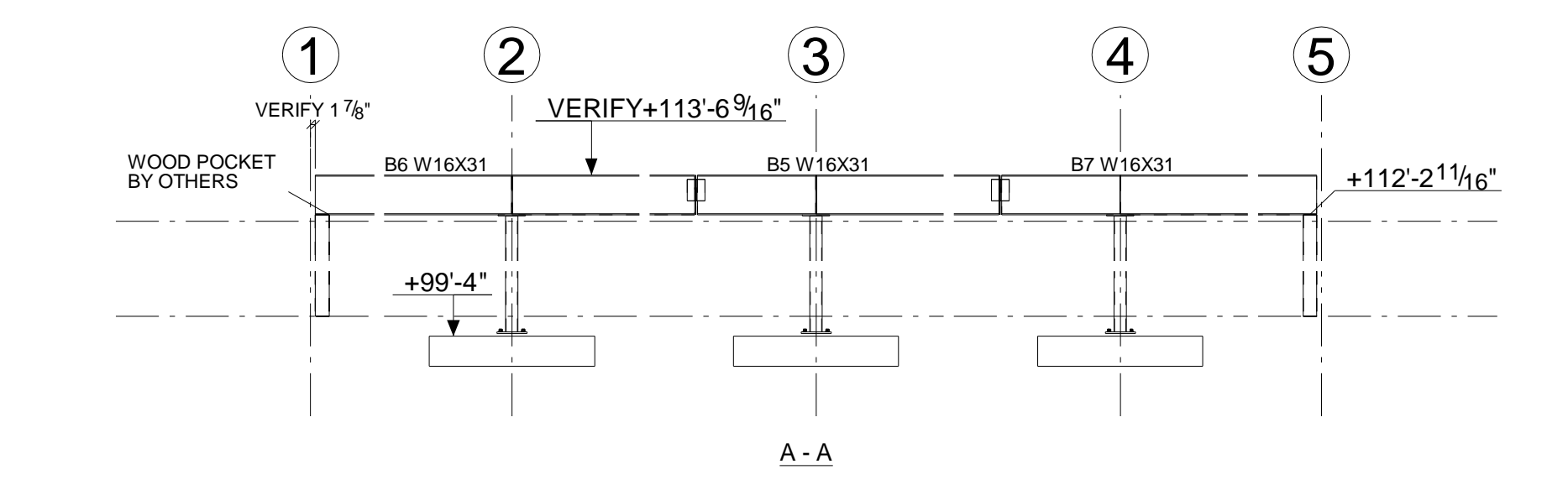
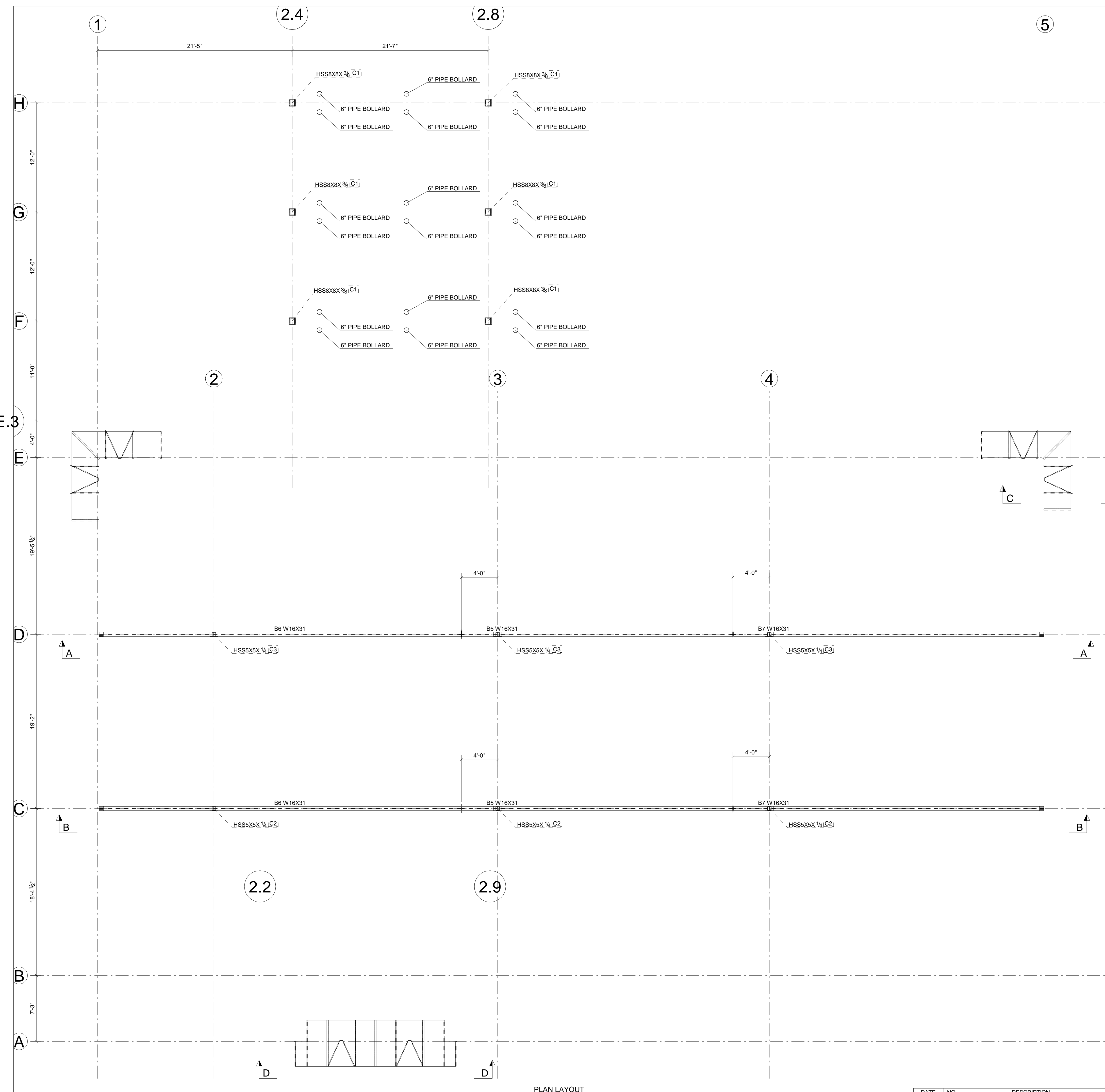
ANCHOR BOLT TO BE SET WITH 4" PROJECTION TYPICAL

USE ASTM F1554-GR36  
3/4" X 1'-0" ANCHOR BOLTS w/  
1~3/4" NUT TACKED @ BOTTOM  
AND 1~3/4" NUT & WASHER @ TOP  
@ FOOTINGS ELEV. 99'-4"

AT DRIVE THRU COLUMNS  
USE ASTM F1554-GR36  
1" X 18" ANCHOR BOLTS w/  
1~1" NUT TACK BOT  
& 1~1" NUT & WASHER @ TOP  
@ FOOTING ELEV. 100'-0"

STEEL ASTM	A992, A500, A36	UNO	PROJECT NAME	US BANK
ELECTRODES	70xx	UNO	LOCATION	2534 JOHNSTOWN, CO
WELDS	3/16" MIN.	UNO	CONTRACTOR	DRAHOTA
OPEN HOLES	13/16" DIA	UNO	ARCHITECT	Arch
BOLTS	A325N-TC	UNO		
PAINT	HS88 RED	UNO		

METAL SOLUTIONS, INC		DATE	5/4/08/2008	JOB No.	819
WINDSOR, CO		DRAWN BY		DRG No.	AB1
970-674-9234 FAX 970-674-9121 www.metalsolutions.com		DESCRIPTION			
ANCHOR BOLT PLA					



NOT SHOWN IN THIS SUBMITTAL: TO BE SUBMITTED BY 8 1/2 X 11

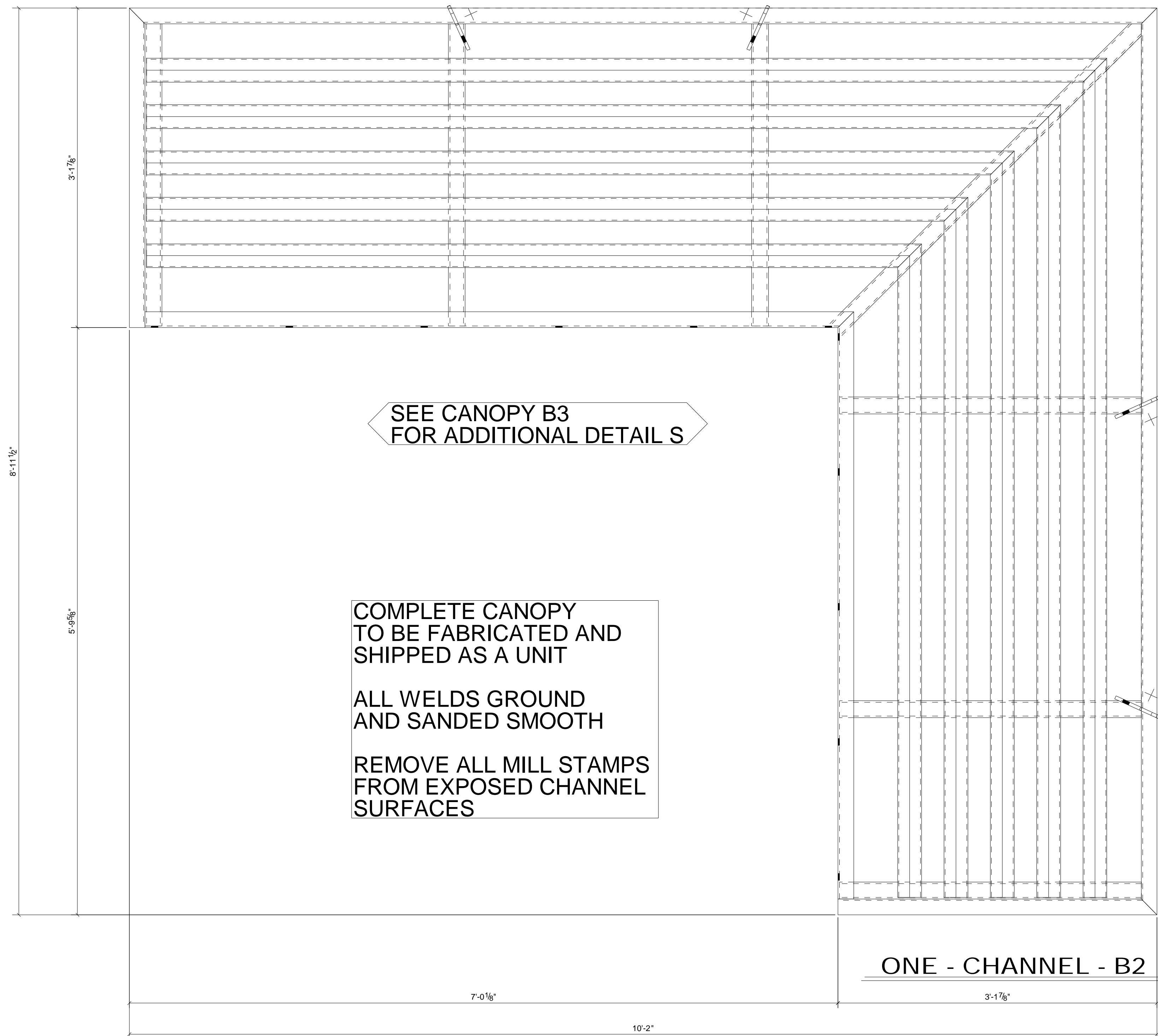
ROOF LADDER TRASH ENCLOSURE SITE CHASE BIKE RACK

STEEL ASTM	A992, A500, A36	UNO	PROJECT NAME	US BANK
ELECTRODES	70xx	UNO	LOCATION	2534 JOHNSTOWN, CO
WELDS	3/16\"/>			
OPEN HOLES	13/16\"/>			
BOLTS	A325N-TC	UNO	CONTRACTOR	DRAHOTA
PAYNT	HS88 RED	UNO	ARCHITECT	Arch

METAL SOLUTIONS, INC		DATE	JOB No.
WINDSOR, CO		5/4/08/2008	819
970-674-9234 FAX 970-674-9121 www.metalsolutions.com		DRAWN BY	DRG No.
DESCRIPTION		PLAN @ ELEV.	E1

DATE	NO.	DESCRIPTION	BY

PLAN LAYOUT



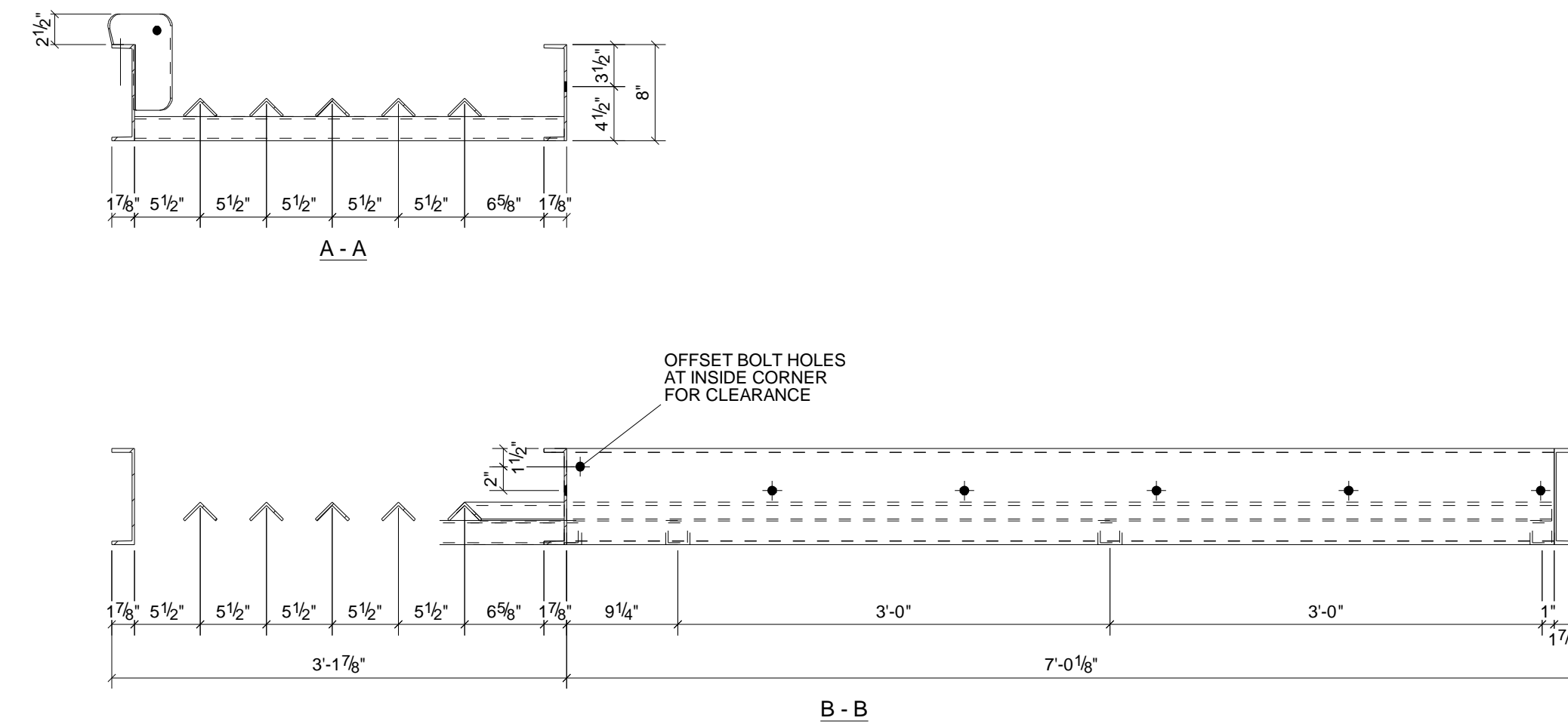
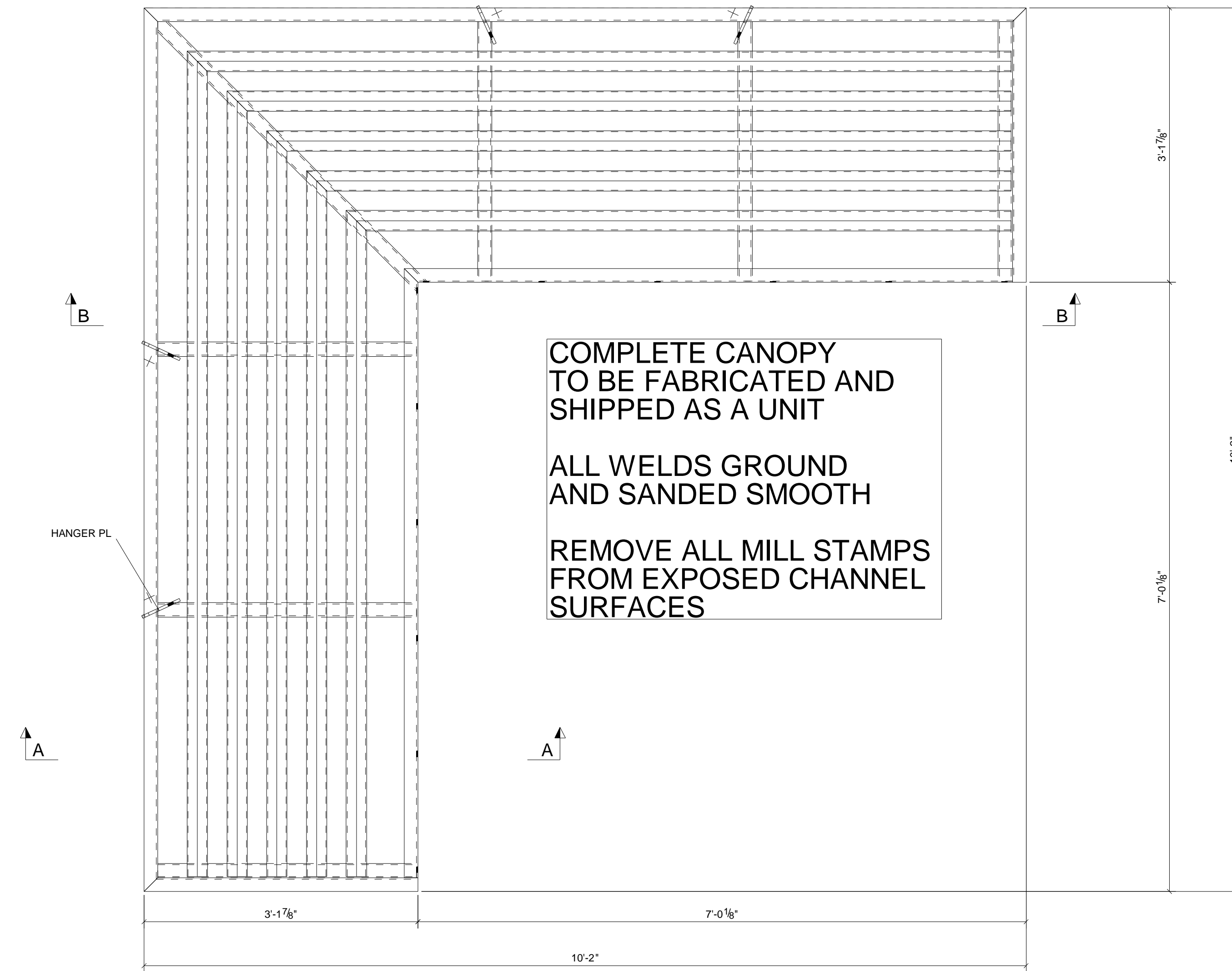
**BILL OF MATERIAL**

Qty Ea.	Qty Tot	Piece Mark	Description	Length	Weight Total	Remarks	Adv Mill #	Steel Grade
	1	B2	CHANNEL					
1	1		MC8X8.5	7'-0 1/8"	60	SQ-18EV-1		A36
1	1	a4	L2X2X3/16	7'-8"	19			A36
1	1	a5	L2X2X3/16	8'-1 1/2"	20			A36
1	1	a6	L2X2X3/16	8'-7"	21			A36
1	1	a7	L2X2X3/16	9'-0 1/2"	22			A36
1	1	a8	L2X2X3/16	9'-6"	23			A36
1	1	a9	L2X2X3/16	6'-5 1/2"	16			A36
1	1	a10	L2X2X3/16	6'-11"	17			A36
1	1	a11	L2X2X3/16	7'-4 1/2"	18			A36
1	1	a12	L2X2X3/16	7'-10"	19			A36
1	1	a13	L2X2X3/16	8'-3 1/2"	20			A36
1	1	b3	HSS2X2X3/16	4'-3 11/16"	17			A500-GR.B
6	6	b6	HSS2X2X3/16	2'-11 13/16"	73			A500-GR.B
1	1	c4	MC8X8.5	5'-9 5/8"	49			A36
2	2	c7	MC8X8.5	3'-1 7/8"	54			A36
1	1	c8	MC8X8.5	8'-11 1/2"	76			A36
1	1	c9	MC8X8.5	10'-2"	86			A36
4	4	p17	PL3/8"X5 11/16"	0'-8"	14			A36

STEEL ASTM	A992,A500,A36	UNO
ELECTRODES	70xx	UNO
WELDS	3/16" MIN.	UNO
OPEN HOLES	13/16" DIA	UNO
BOLTS	A325N-TC	UNO
PAINT	HS88 RED	UNO

PROJECT NAME	US BANK
LOCATION	2534 JOHNSTOWN,CO
CONTRACTOR	DRAHOTA
ARCHITECT	Arch

DATE	NO.	DESCRIPTION	BY
<b>METAL SOLUTIONS, INC</b> WINDSOR, CO 970-674-9234 FAX 970-674-9121 www.metalsolutions.			
DESCRIPTION	DATE	JOB No.	
CORNER CANOPY	04/08/2008	819	
DRAWN BY	DRG No.		
	B2		



**ONE - CHANNEL - B3**

**BILL OF MATERIAL**

Qty Ea.	Qty Tot	Piece Mark	Description	Length	Weight Total	Remarks	Adv Mill #	Steel Grade
1	1	B3	CHANNEL					
1	1		MC8X8.5	7'-0 1/8"	60	SQ-18EV-1		A36
1	1	a4	L2X2X3/16	7'-8"	19			A36
1	1	a5	L2X2X3/16	8'-1 1/2"	20			A36
1	1	a6	L2X2X3/16	8'-7"	21			A36
1	1	a7	L2X2X3/16	9'-0 1/2"	22			A36
1	1	a8	L2X2X3/16	9'-6"	23			A36
1	1	a14	L2X2X3/16	7'-8"	19			A36
1	1	a15	L2X2X3/16	8'-1 1/2"	20			A36
1	1	a16	L2X2X3/16	8'-7"	21			A36
1	1	a17	L2X2X3/16	9'-0 1/2"	22			A36
1	1	a18	L2X2X3/16	9'-6"	23			A36
1	1	b1	HSS2X2X3/16	2'-11 13/16"	12			A500-GR.B
1	1	b2	HSS2X2X3/16	4'-3 11/16"	17			A500-GR.B
5	5	b6	HSS2X2X3/16	2'-11 13/16"	60			A500-GR.B
1	1	c3	MC8X8.5	7'-0 1/8"	60			A36
2	2	c7	MC8X8.5	3'-1 7/8"	54			A36
2	2	c9	MC8X8.5	10'-2"	173			A36
4	4	p17	PL3/8"X5 11/16"	0'-8"	14			A36

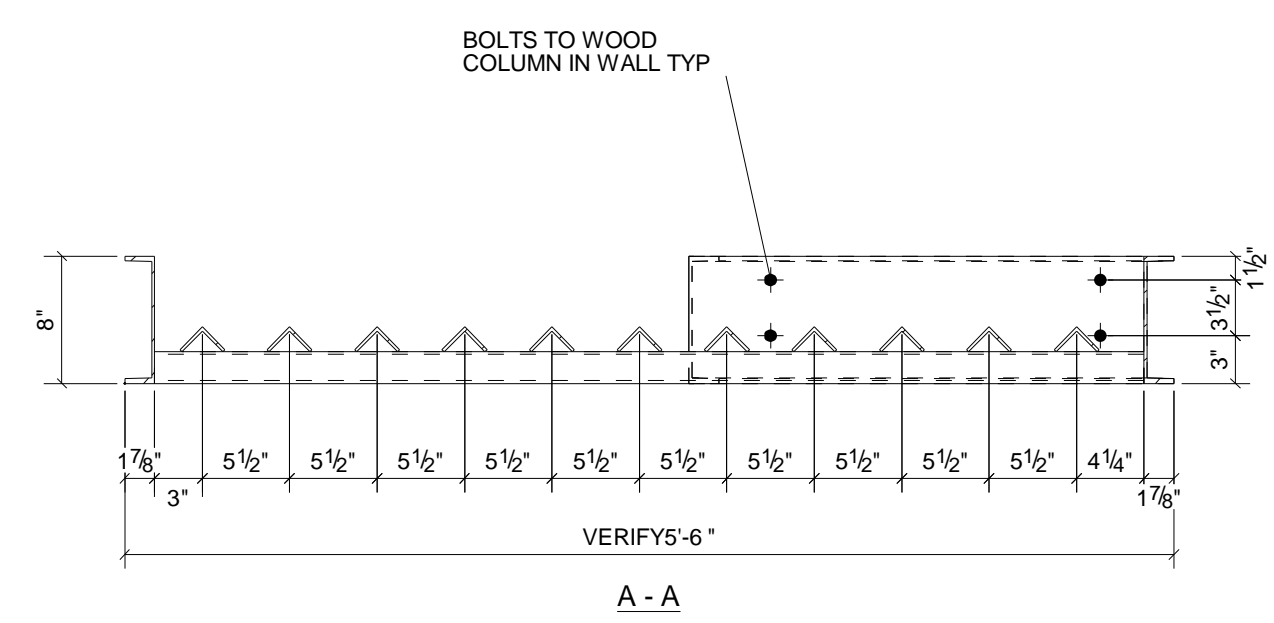
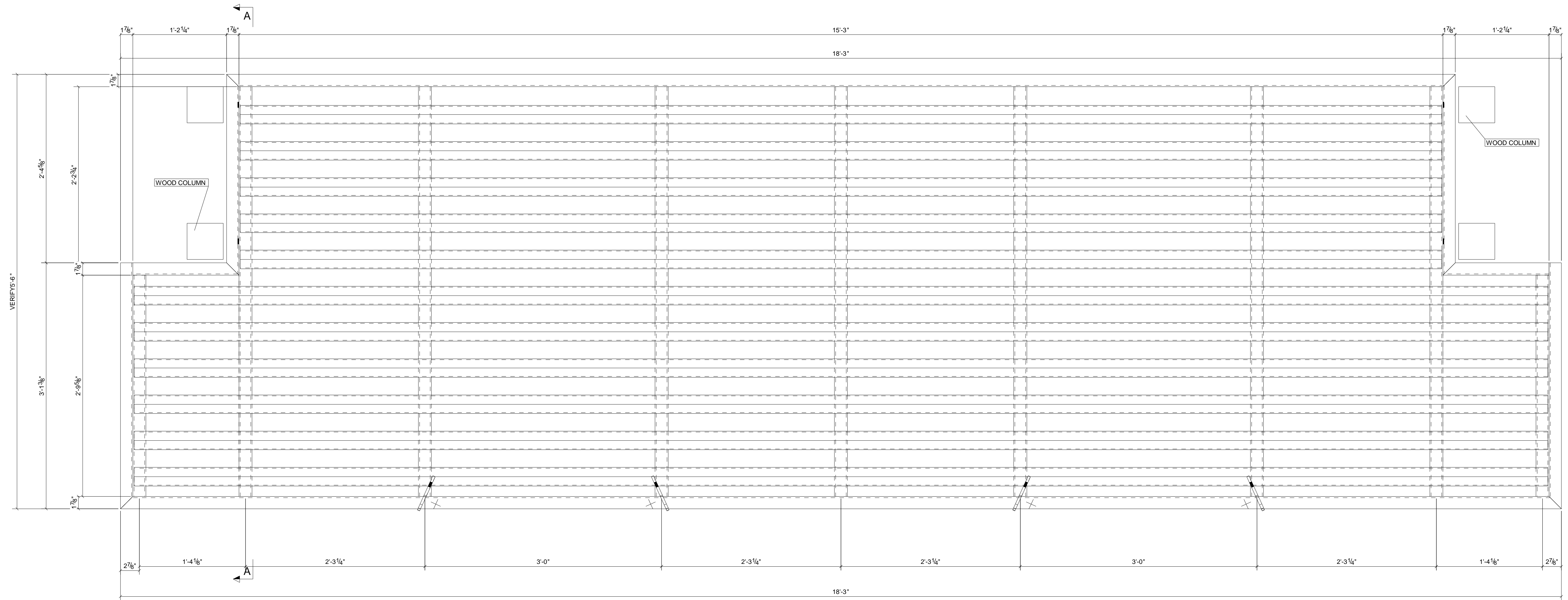
DATE	NO.	DESCRIPTION	BY
04/08/2008		CORNER CANOPY	B3

STEEL ASTM	A992,A500,A36	UNO	PROJECT NAME	US BANK
ELECTRODES	70xx	UNO	LOCATION	2534 JOHNSTOWN,CO
WELDS	3/16" MIN.	UNO	CONTRACTOR	DRAHOTA
OPEN HOLES	13/16" DIA	UNO	ARCHITECT	Arch
BOLTS	A325N-TC	UNO		
PAINT	HS88 RED	UNO		

<b>METAL SOLUTIONS, INC</b>	
WINDSOR, CO	
970-674-9234 FAX 970-674-9121 www.metalsolutions.	
DATE	JOB No.
04/08/2008	819
DRAWN BY	DRG No.
	B3



COMPLETE CANOPY  
TO BE FABRICATED AND  
SHIPPED AS A UNIT

ALL WELDS GROUND  
AND SANDED SMOOTH

REMOVE ALL MILL STAMPS  
FROM EXPOSED CHANNEL  
SURFACES

ONE - CHANNEL - B4

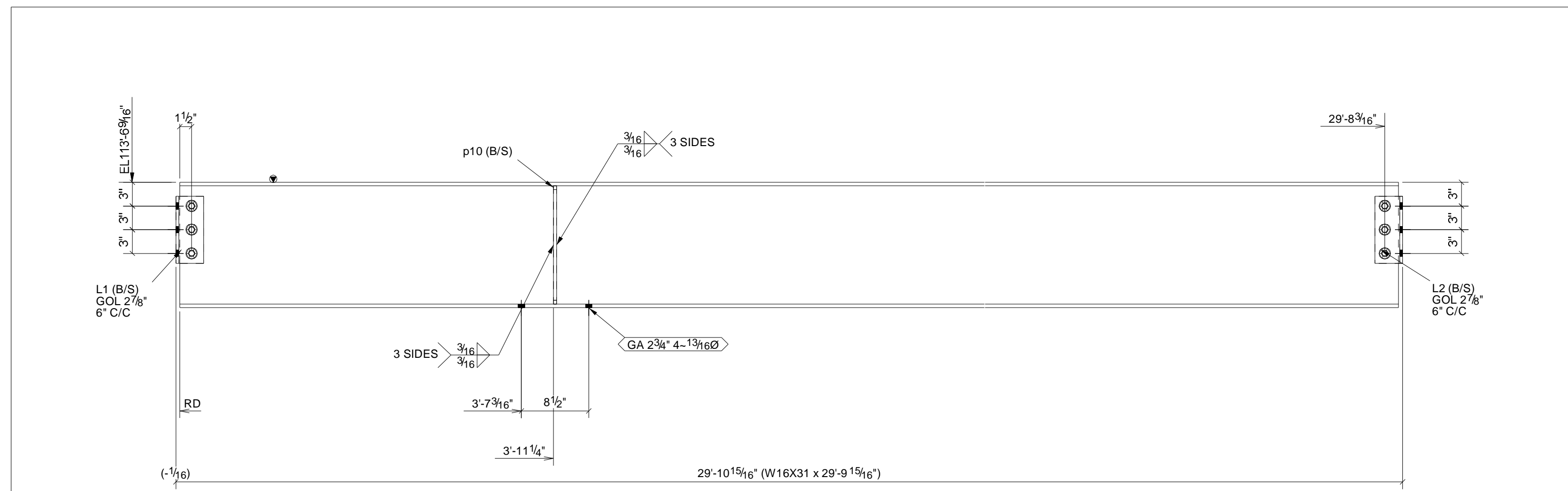
**BILL OF MATERIAL**

Qty Ea.	Qty Tot	Piece Mark	Description	Length	Weight Total	Remarks	Adv Mill #	Steel Grade
1	1	B4	CHANNEL					
1	1		MC8X8.5	18'-3"	155	BEV-2		A36
6	6	a2	L2X2X3/16	17'-10 7/8"	261			A36
5	5	a3	L2X2X3/16	15'-2 5/8"	185			A36
7	7	b4	HSS2X2X3/16	5'-2 1/4"	147			A500-GR.B
2	2	b5	HSS2X2X3/16	2'-9 5/8"	23			A500-GR.B
1	1	c5	MC8X8.5	2'-6 1/2"	22			A36
1	1	c6	MC8X8.5	2'-6 1/2"	22			A36
2	2	c10	MC8X8.5	1'-4 1/8"	23			A36
1	1	c11	MC8X8.5	15'-6 3/4"	132			A36
2	2	c12	MC8X8.5	3'-1 3/8"	53			A36
4	4	p17	PL3/8"X5 11/16"	0'-8"	14			A36

STEEL ASTM	A992,A500,A36	UNO
ELECTRODES	70xx	UNO
WELDS	3/16" MIN.	UNO
OPEN HOLES	13/16" DIA	UNO
BOLTS	A325N-TC	UNO
PAINT	HS88 RED	UNO

PROJECT NAME	US BANK
LOCATION	2534 JOHNSTOWN,CO
CONTRACTOR	DRAHOTA
ARCHITECT	Arch

DATE	NO.	DESCRIPTION	BY
<b>METAL SOLUTIONS, INC</b>			
WINDSOR, CO			
970-674-9234 FAX 970-674-9121 www.metalsolutions.			
DESCRIPTION	DATE	JOB No.	
ENTRY CANOPY	04/08/2008	819	
DRAWN BY		DRG No.	B4



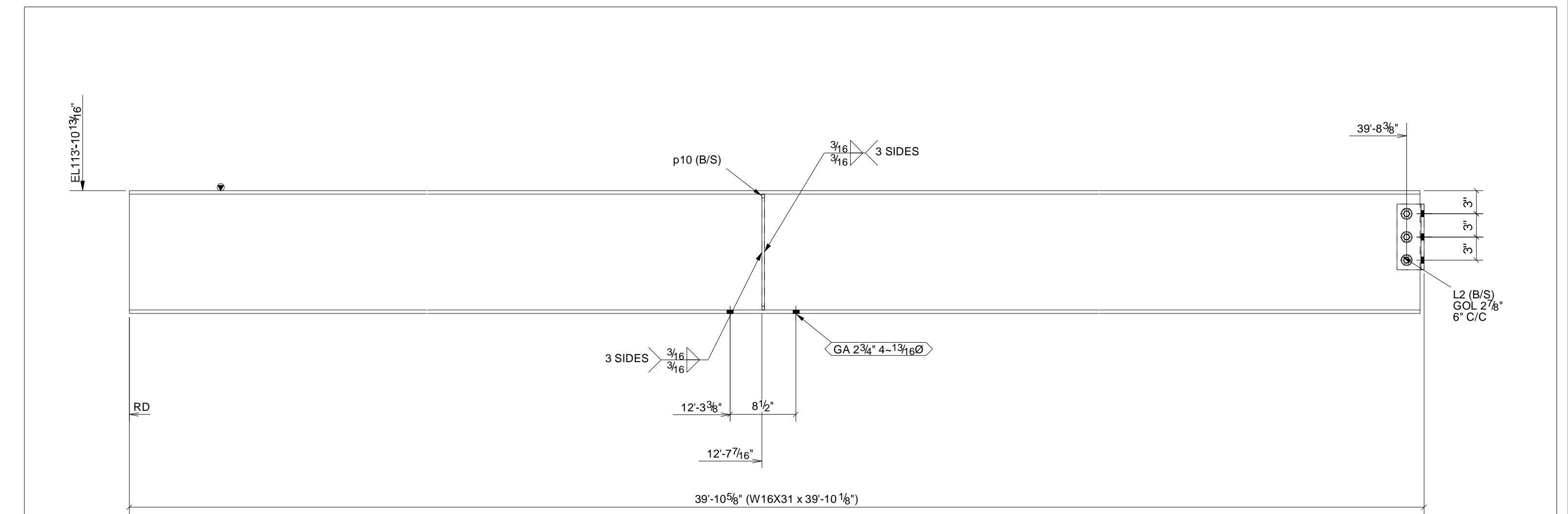
**2 - BEAMS - B5**

W 15 788 x 114  
F 5 1/2 x 7/16

Qty Ea.	Qty Tot	Piece Mark	Description	Length	Weight Total	Remarks	Adv Mill #	Steel Grade
2	2	B5	BEAM					
2	2	W16X31		29'-9 15/16"	1852	S02		A992
2	4	L1	L4X3-1/2X3/8	0'-8 1/2"	26			A36
2	4	L2	L4X3-1/2X3/8	0'-8 1/2"	26			A36
2	4	p10	PL3/8"X2 1/2"	1'-3"	16			A36
3	6		3/4Ø A325N_TC BOLT	2"	4			
3	6		3/4Ø A325N_TC BOLT	2"	4			

STEEL ASTM	A992,A500,A36	UNO	PROJECT NAME	US BANK
ELECTRODES	70xx	UNO <td>LOCATION</td> <td>2534 JOHNSTOWN,CO</td>	LOCATION	2534 JOHNSTOWN,CO
WELDS	3/16" MIN.	UNO <td>CONTRACTOR</td> <td>DRAHOTA</td>	CONTRACTOR	DRAHOTA
OPEN HOLES	13/16" DIA	UNO <td>ARCHITECT</td> <td>Arch</td>	ARCHITECT	Arch
BOLTS	A325N-TC	UNO <td>DATE</td> <td>04/08/2008</td>	DATE	04/08/2008
PAINT	HS88 RED	UNO <td>JOB No.</td> <td>819</td>	JOB No.	819
			DESCRIPTION	BEAM
			DRAWN BY	B5

DATE	NO.	DESCRIPTION	BY
		METAL SOLUTIONS, INC	
		WINDSOR, CO	
		970-674-9234 FAX 970-674-9121 www.metalsolutions.	



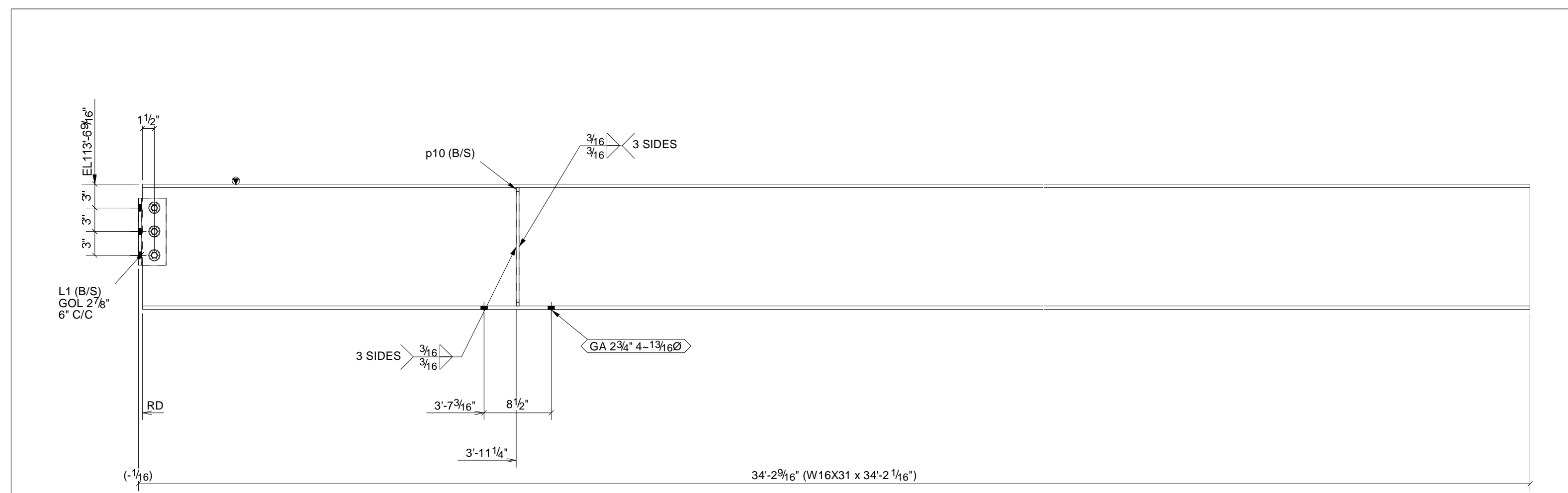
**2 - BEAMS - B6**

W 15 788 x 114  
F 5 1/2 x 7/16

Qty Ea.	Qty Tot	Piece Mark	Description	Length	Weight Total	Remarks	Adv Mill #	Steel Grade
2	2	B6	BEAM					
2	2	W16X31		39'-10 1/8"	2473	S02		A992
2	4	L2	L4X3-1/2X3/8	0'-8 1/2"	26			A36
2	4	p10	PL3/8"X2 1/2"	1'-3"	16			A36
3	6		3/4Ø A325N_TC BOLT	2"	4			

STEEL ASTM	A992,A500,A36	UNO	PROJECT NAME	US BANK
ELECTRODES	70xx	UNO <td>LOCATION</td> <td>2534 JOHNSTOWN,CO</td>	LOCATION	2534 JOHNSTOWN,CO
WELDS	3/16" MIN.	UNO <td>CONTRACTOR</td> <td>DRAHOTA</td>	CONTRACTOR	DRAHOTA
OPEN HOLES	13/16" DIA	UNO <td>ARCHITECT</td> <td>Arch</td>	ARCHITECT	Arch
BOLTS	A325N-TC	UNO <td>DATE</td> <td>04/08/2008</td>	DATE	04/08/2008
PAINT	HS88 RED	UNO <td>JOB No.</td> <td>819</td>	JOB No.	819
			DESCRIPTION	BEAM
			DRAWN BY	B6

DATE	NO.	DESCRIPTION	BY
		METAL SOLUTIONS, INC	
		WINDSOR, CO	
		970-674-9234 FAX 970-674-9121 www.metalsolutions.	



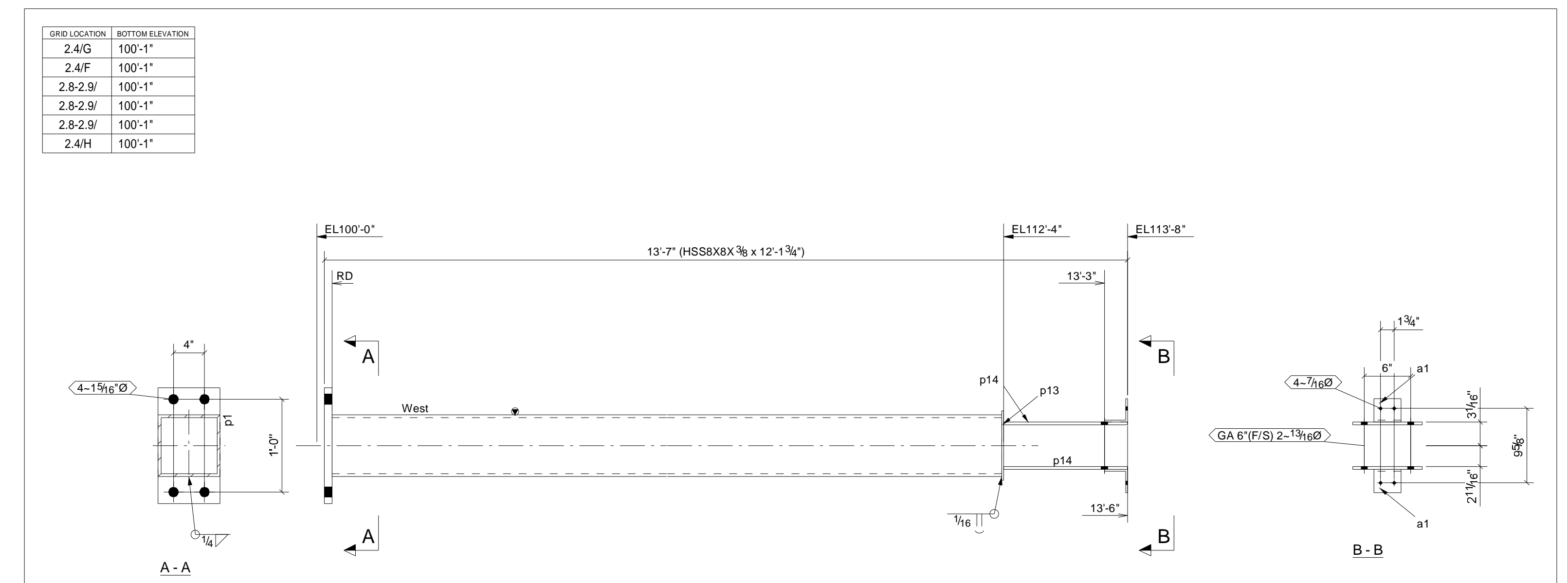
**2 - BEAMS - B7**

W 15 788 x 114  
F 5 1/2 x 7/16

Qty Ea.	Qty Tot	Piece Mark	Description	Length	Weight Total	Remarks	Adv Mill #	Steel Grade
2	2	B7	BEAM					
2	2	W16X31		34'-2 1/16"	2121	S02		A992
2	4	L1	L4X3-1/2X3/8	0'-8 1/2"	26			A36
2	4	p10	PL3/8"X2 1/2"	1'-3"	16			A36
3	6		3/4Ø A325N_TC BOLT	2"	4			

STEEL ASTM	A992,A500,A36	UNO	PROJECT NAME	US BANK
ELECTRODES	70xx	UNO <td>LOCATION</td> <td>2534 JOHNSTOWN,CO</td>	LOCATION	2534 JOHNSTOWN,CO
WELDS	3/16" MIN.	UNO <td>CONTRACTOR</td> <td>DRAHOTA</td>	CONTRACTOR	DRAHOTA
OPEN HOLES	13/16" DIA	UNO <td>ARCHITECT</td> <td>Arch</td>	ARCHITECT	Arch
BOLTS	A325N-TC	UNO <td>DATE</td> <td>04/08/2008</td>	DATE	04/08/2008
PAINT	HS88 RED	UNO <td>JOB No.</td> <td>819</td>	JOB No.	819
			DESCRIPTION	BEAM
			DRAWN BY	B7

DATE	NO.	DESCRIPTION	BY
		METAL SOLUTIONS, INC	
		WINDSOR, CO	
		970-674-9234 FAX 970-674-9121 www.metalsolutions.	



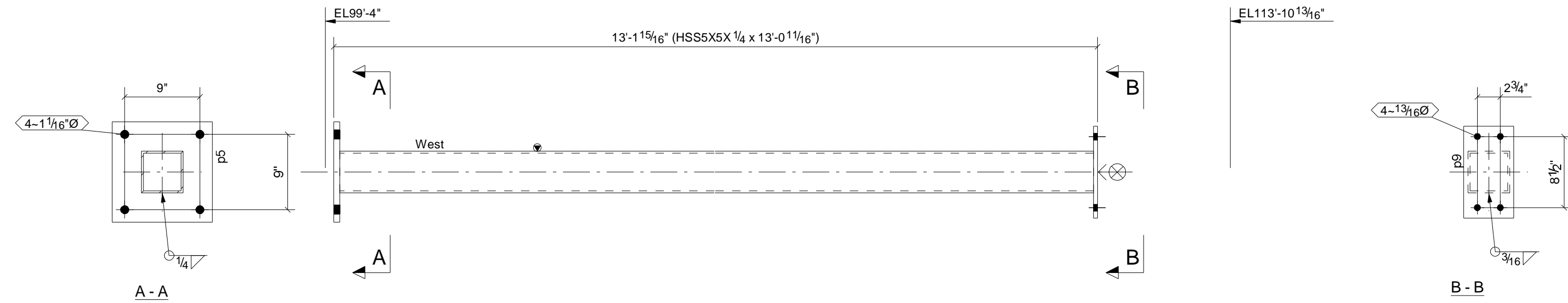
**6 - COLUMNS - C1**

Qty Ea.	Qty Tot	Piece Mark	Description	Length	Weight Total	Remarks	Adv Mill #	Steel Grade
6	6	C1	COLUMN					
6	6	HSS8X8X3/8		12'-1 3/4"	2579	S02		A500-GR-B
2	12	a1	L3X3X1/4	0'-3 1/2"	17			A36
1	6	p1	PL1"X8"	1'-3"	204			A36
1	6	p13	PL1/4"X9"	0'-9"	34			A36
2	12	p14	PL3/8"X9"	1'-4"	184			A36

STEEL ASTM	A992,A500,A36	UNO	PROJECT NAME	US BANK
ELECTRODES	70xx	UNO <td>LOCATION</td> <td>2534 JOHNSTOWN,CO</td>	LOCATION	2534 JOHNSTOWN,CO
WELDS	3/16" MIN.	UNO <td>CONTRACTOR</td> <td>DRAHOTA</td>	CONTRACTOR	DRAHOTA
OPEN HOLES	13/16" DIA	UNO <td>ARCHITECT</td> <td>Arch</td>	ARCHITECT	Arch
BOLTS	A325N-TC	UNO <td>DATE</td> <td>04/08/2008</td>	DATE	04/08/2008
PAINT	HS88 RED	UNO <td>JOB No.</td> <td>819</td>	JOB No.	819
			DESCRIPTION	COLUMN
			DRAWN BY	C1

DATE	NO.	DESCRIPTION	BY
		METAL SOLUTIONS, INC	
		WINDSOR, CO	
		970-674-9234 FAX 970-674-9121 www.metalsolutions.	

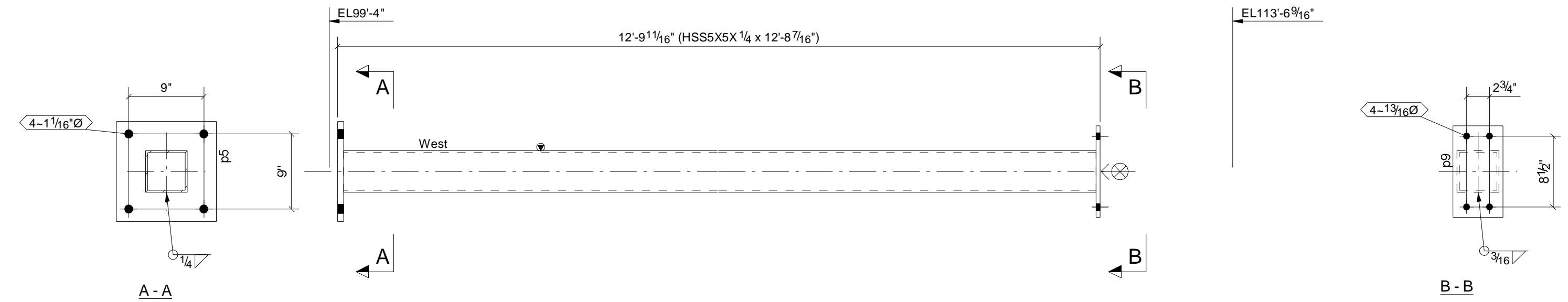
GRID LOCATION	BOTTOM ELEVATION
3/C	99'-5"
2/C	99'-5"
4/C	99'-5"



**3 - COLUMNS - C2**

BILL OF MATERIAL										DATE	NO.	DESCRIPTION	BY
Qty	Qty	Piece	Description	Length	Weight	Remarks	Adv	Steel	STEEL ASTM	A992,A500,A36	UNO	PROJECT NAME	US BANK
3	3	C2	COLUMN						ELECTRODES	70xx	UNO	LOCATION	2534 JOHNSTOWN,CO
3	3		HSS5X5X1/4	13'-0 11/16"	573	S02			WELDS	3/16" MIN.	UNO	CONTRACTOR	DRAHOTA
1	3	p5	PL3/4"X12"	1'-0"	92				OPEN HOLES	13/16" DIA	UNO	ARCHITECT	Arch
1	3	p9	PL1/2"X6"	0'-11"	28				BOLTS	A325N-TC	UNO	ARCHITECT	Arch
									PAINT	HS88 RED	UNO	ARCHITECT	Arch
										DATE	04/08/2008	DESCRIPTION	COLUMN
										NO.	819	DESCRIPTION	C2
										BY		DESCRIPTION	METAL SOLUTIONS, INC
												DESCRIPTION	WINDSOR, CO
												DESCRIPTION	970-674-9234 FAX 970-674-9121 www.metalsolutions.

GRID LOCATION	BOTTOM ELEVATION
3/D	99'-5"
4/D	99'-5"
2/D	99'-5"



**3 - COLUMNS - C3**

BILL OF MATERIAL										DATE	NO.	DESCRIPTION	BY
Qty	Qty	Piece	Description	Length	Weight	Remarks	Adv	Steel	STEEL ASTM	A992,A500,A36	UNO	PROJECT NAME	US BANK
3	3	C3	COLUMN						ELECTRODES	70xx	UNO	LOCATION	2534 JOHNSTOWN,CO
3	3		HSS5X5X1/4	12'-8 7/16"	558	S02			WELDS	3/16" MIN.	UNO	CONTRACTOR	DRAHOTA
1	3	p5	PL3/4"X12"	1'-0"	92				OPEN HOLES	13/16" DIA	UNO	ARCHITECT	Arch
1	3	p9	PL1/2"X6"	0'-11"	28				BOLTS	A325N-TC	UNO	ARCHITECT	Arch
									PAINT	HS88 RED	UNO	ARCHITECT	Arch
										DATE	04/08/2008	DESCRIPTION	COLUMN
										NO.	819	DESCRIPTION	C3
										BY		DESCRIPTION	METAL SOLUTIONS, INC
												DESCRIPTION	WINDSOR, CO
												DESCRIPTION	970-674-9234 FAX 970-674-9121 www.metalsolutions.

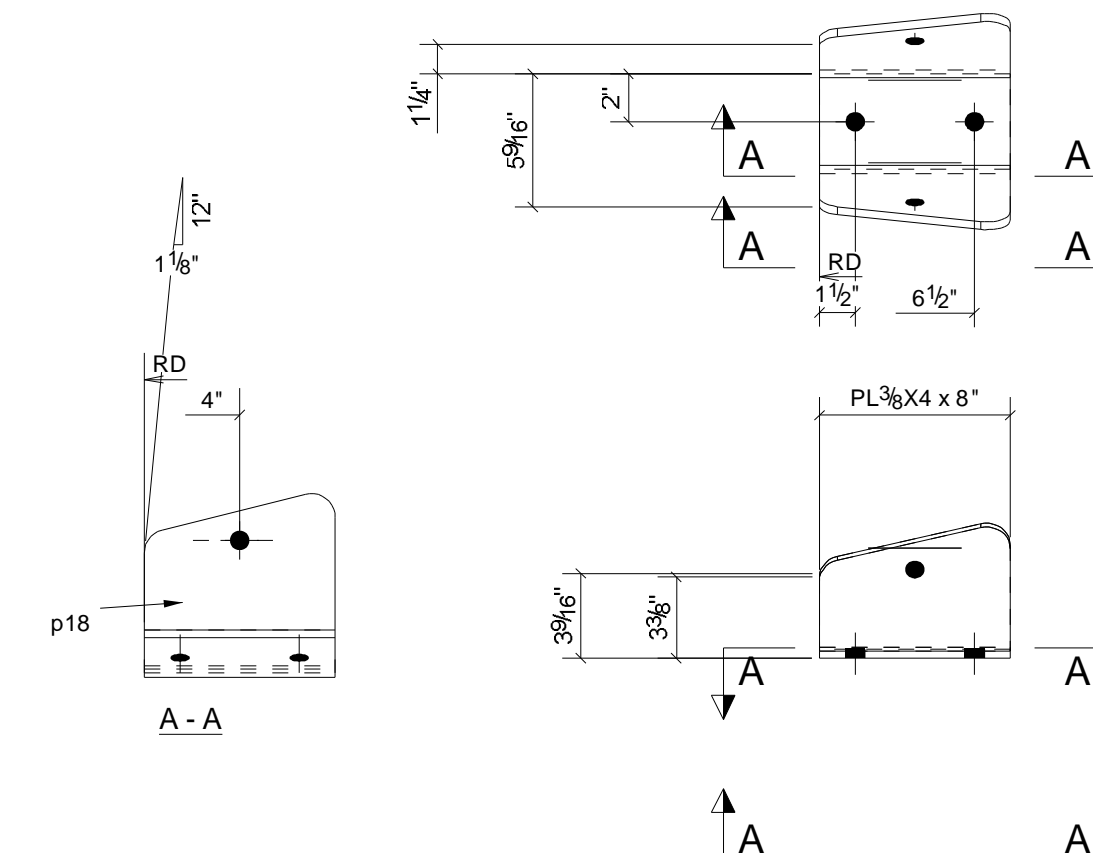
GRID LOCATION	BOTTOM ELEVATION
2.4-2.8/	97'-2"
2.4-2.8/	97'-2"
2.4-2.8/	97'-2"
3-4/H	97'-2"
3-4/H	97'-2"
2.4-2.8/	97'-2"
2.4-2.8/	97'-2"
2.4-2.8/	97'-2"
2.4-2.8/	97'-2"
2.4-2.8/	97'-2"
2.4-2.8/	97'-2"
2.4-2.8/	97'-2"
2.4-2.8/	97'-2"
2.4-2.8/	97'-2"
2.4-2.8/	97'-2"
3-4/G	97'-2"
3-4/G	97'-2"
2.4-2.8/	97'-2"
2.4-2.8/	97'-2"
2.4-2.8/	97'-2"
2.4-2.8/	97'-2"
3-4/F	97'-2"
3-4/F	97'-2"



**18 - COLUMNS - C7**

BILL OF MATERIAL										DATE	NO.	DESCRIPTION	BY
Qty	Qty	Piece	Description	Length	Weight	Remarks	Adv	Steel	STEEL ASTM	A992,A500,A36	UNO	PROJECT NAME	US BANK
18	18	C7	COLUMN						ELECTRODES	70xx	UNO	LOCATION	2534 JOHNSTOWN,CO
18	18		HSS6.625X.188	7'-0"	1514	S02			WELDS	3/16" MIN.	UNO	CONTRACTOR	DRAHOTA
									OPEN HOLES	13/16" DIA	UNO	ARCHITECT	Arch
									BOLTS	A325N-TC	UNO	ARCHITECT	Arch
									PAINT	HS88 RED	UNO	ARCHITECT	Arch
										DATE	04/08/2008	DESCRIPTION	BOLLARD
										NO.	819	DESCRIPTION	C7
										BY		DESCRIPTION	METAL SOLUTIONS, INC
												DESCRIPTION	WINDSOR, CO
												DESCRIPTION	970-674-9234 FAX 970-674-9121 www.metalsolutions.

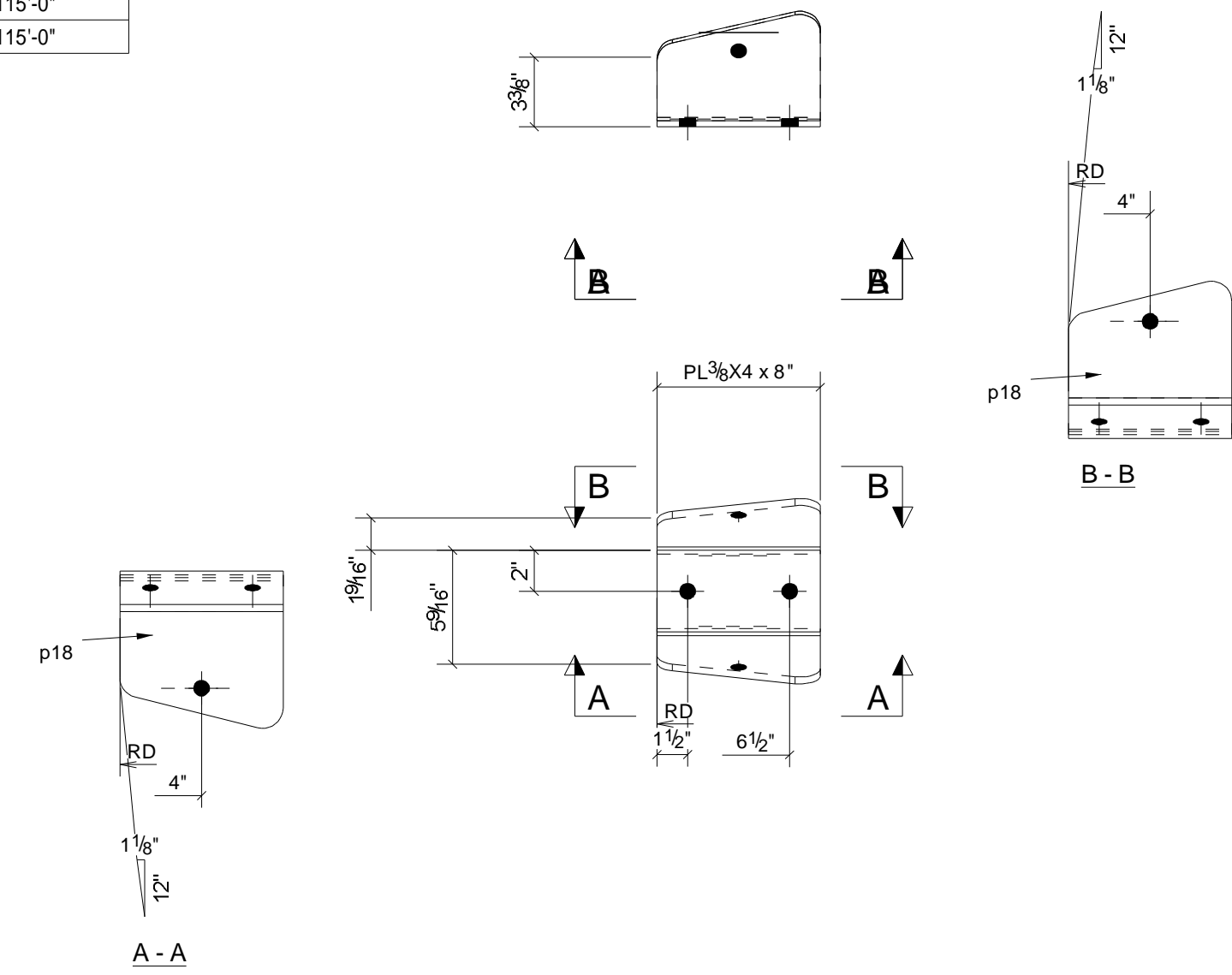
GRID LOCATION	BOTTOM ELEVATION
1/D-E	115'-0"



**ONE - PLATE - P5**

BILL OF MATERIAL										DATE	NO.	DESCRIPTION	BY
Qty	Qty	Piece	Description	Length	Weight	Remarks	Adv	Steel	STEEL ASTM	A992,A500,A36	UNO	PROJECT NAME	US BANK
1	1	P5	PLATE						ELECTRODES	70xx	UNO	LOCATION	2534 JOHNSTOWN,CO
1	1		PL3/8"X4"	0'-8"	3	S02			WELDS	3/16" MIN.	UNO	CONTRACTOR	DRAHOTA
2	2	p18	PL3/8"X5 11/16"	0'-8"	8				OPEN HOLES	13/16" DIA	UNO	ARCHITECT	Arch
									BOLTS	A325N-TC	UNO	ARCHITECT	Arch
									PAINT	HS88 RED	UNO	ARCHITECT	Arch
										DATE	04/08/2008	DESCRIPTION	ENTRY CANOPY
										NO.	819	DESCRIPTION	P5
										BY		DESCRIPTION	METAL SOLUTIONS, INC
												DESCRIPTION	WINDSOR, CO
												DESCRIPTION	970-674-9234 FAX 970-674-9121 www.metalsolutions.

GRID LOCATION	BOTTOM ELEVATION
1-2/E	115'-0"
4-5/E	115'-0"

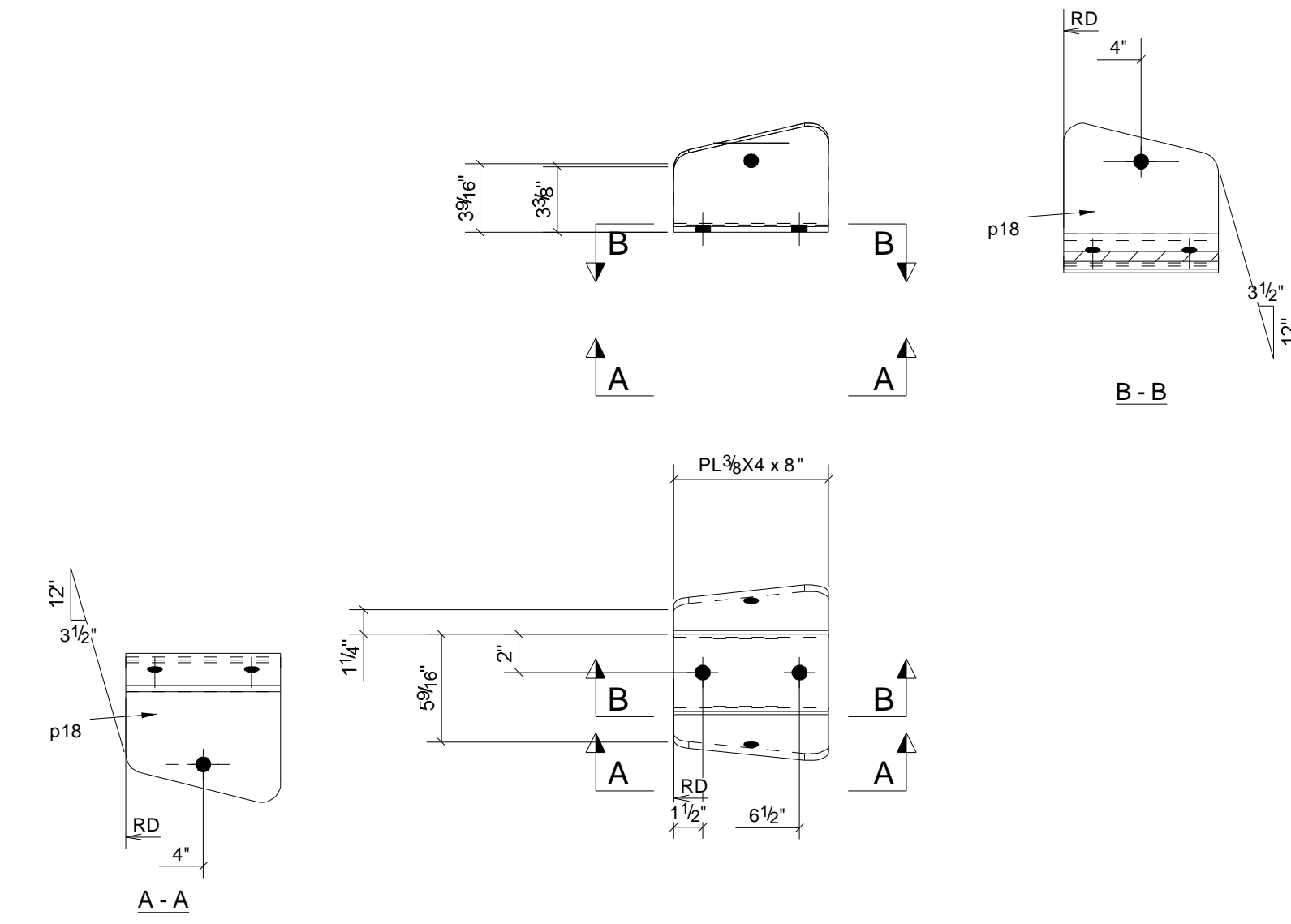


2 - PLATES - P6

BILL OF MATERIAL										STEEL ASTM	A992, A500, A36	UNO	PROJECT NAME	US BANK	DATE	NO.	DESCRIPTION	BY	
Qty	Qty	Piece	Description	Length	Weight	Remarks	Adv	Steel		ELECTRODES	70xx	UNO	LOCATION	2534 JOHNSTOWN, CO					
2	2	P6	PLATE							WELDS	3/16" MIN.	UNO	CONTRACTOR	DRAHOTA					
2	2		PL3/8"x4"	0'-8"	7	S02		A36		OPEN HOLES	13/16" DIA	UNO	ARCHITECT	Arch					
2	4	p18	PL3/8"x5 11/16"	0'-8"	17			A36		BOLTS	A325N-TC	UNO							
										PAINT	HS88 RED	UNO							

METAL SOLUTIONS, INC		DATE	NO.	DESCRIPTION	BY
WINDSOR, CO				ENTRY CANOPY	
970-674-9234 FAX 970-674-9121 www.metalsolutions.		DATE	NO.	DESCRIPTION	BY
		04/08/2008		ENTRY CANOPY	P6

GRID LOCATION	BOTTOM ELEVATION
5/D-E	115'-0"

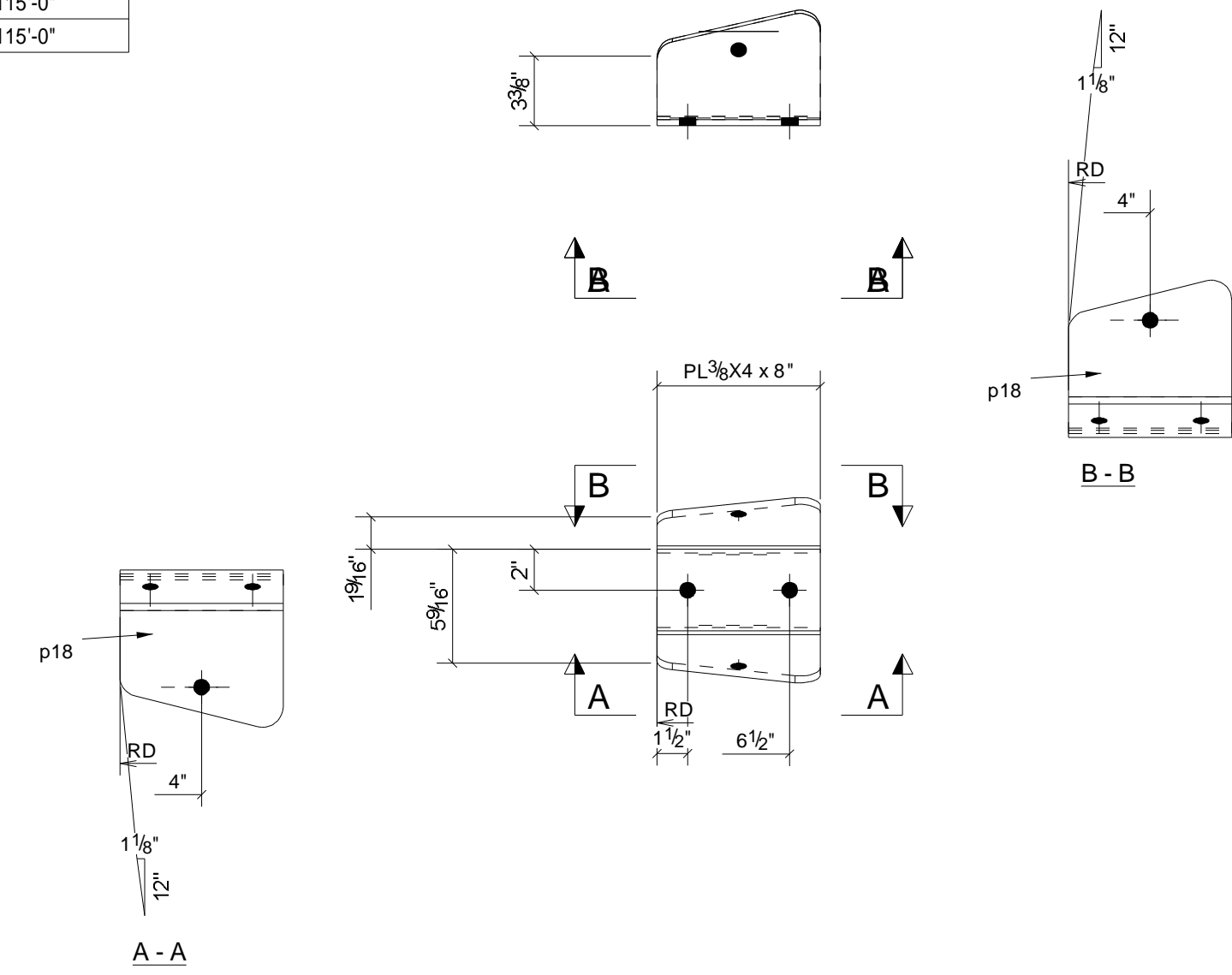


ONE - PLATE - P7

BILL OF MATERIAL										STEEL ASTM	A992, A500, A36	UNO	PROJECT NAME	US BANK	DATE	NO.	DESCRIPTION	BY	
Qty	Qty	Piece	Description	Length	Weight	Remarks	Adv	Steel		ELECTRODES	70xx	UNO	LOCATION	2534 JOHNSTOWN, CO					
1	1	P7	PLATE							WELDS	3/16" MIN.	UNO	CONTRACTOR	DRAHOTA					
1	1		PL3/8"x4"	0'-8"	3	S02		A36		OPEN HOLES	13/16" DIA	UNO	ARCHITECT	Arch					
2	2	p18	PL3/8"x5 11/16"	0'-8"	8			A36		BOLTS	A325N-TC	UNO							
										PAINT	HS88 RED	UNO							

METAL SOLUTIONS, INC		DATE	NO.	DESCRIPTION	BY
WINDSOR, CO				ENTRY CANOPY	
970-674-9234 FAX 970-674-9121 www.metalsolutions.		DATE	NO.	DESCRIPTION	BY
		04/08/2008		ENTRY CANOPY	P7

GRID LOCATION	BOTTOM ELEVATION
2.4-2.8/	115'-0"
2.4-2.8/	115'-0"



2 - PLATES - P8

BILL OF MATERIAL										STEEL ASTM	A992, A500, A36	UNO	PROJECT NAME	US BANK	DATE	NO.	DESCRIPTION	BY	
Qty	Qty	Piece	Description	Length	Weight	Remarks	Adv	Steel		ELECTRODES	70xx	UNO	LOCATION	2534 JOHNSTOWN, CO					
2	2	P8	PLATE							WELDS	3/16" MIN.	UNO	CONTRACTOR	DRAHOTA					
2	2		PL3/8"x4"	0'-8"	7	S02		A36		OPEN HOLES	13/16" DIA	UNO	ARCHITECT	Arch					
2	4	p18	PL3/8"x5 11/16"	0'-8"	17			A36		BOLTS	A325N-TC	UNO							
										PAINT	HS88 RED	UNO							

METAL SOLUTIONS, INC		DATE	NO.	DESCRIPTION	BY
WINDSOR, CO				ENTRY CANOPY	
970-674-9234 FAX 970-674-9121 www.metalsolutions.		DATE	NO.	DESCRIPTION	BY
		04/08/2008		ENTRY CANOPY	P8