

4	11B
2	11C
2	11D
4	12A
2	12C
2	13A
Qty.	In Assembly

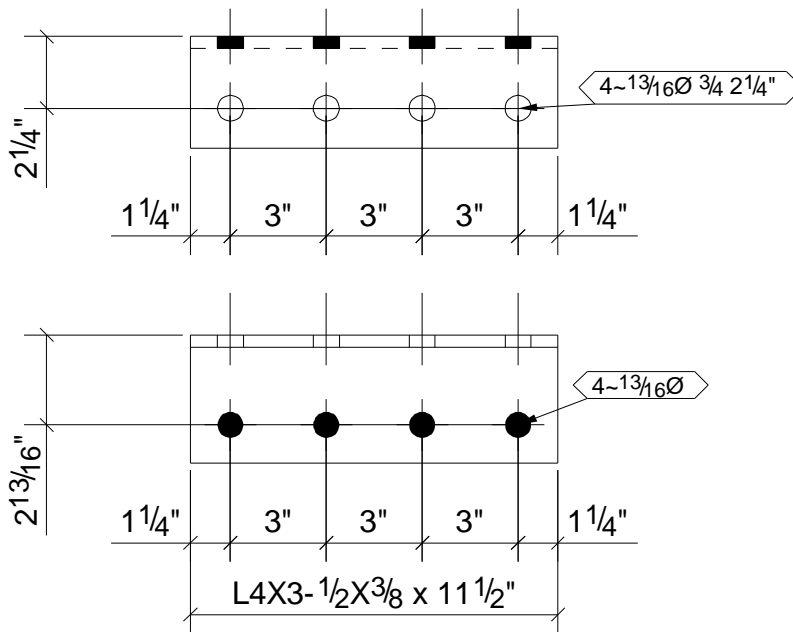
L1	L4X3-1/2X3/8	A36	16	0'-11 1/2"	178	9	
MARK	SIZE	GRADE	QTY.	LENGTH	AREA	WEIGHT	
MATERIAL LIST FOR WORKSHOP					TOTALS	0 in ²	0 lb/ft

METAL SOLUTIONS, INC
 6863 CR #60
 WINDSOR, CO

DRAWING No.

L1

JOB No.	07.08	DESCRIPTION	ANGLE
DRAWN BY		REVISION No.	
DATE DRAWN	05/04/2007	REVISION DATE	

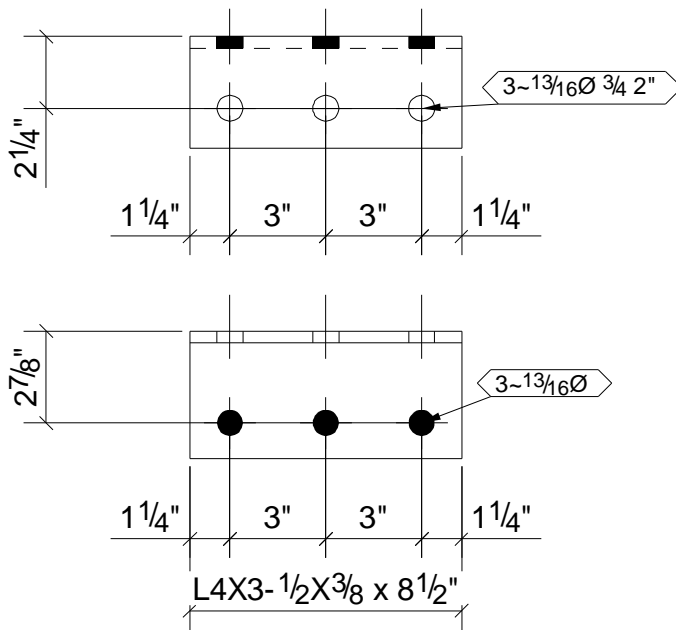


2	13B
2	14A
Qty.	In Assembly

L2	L4X3-1/2X3/8	A36	4	0'-11 1/2"	178	9	
MARK	SIZE	GRADE	QTY.	LENGTH	AREA	WEIGHT	
MATERIAL LIST FOR WORKSHOP					TOTALS	0 in ²	0 lb/ft

METAL SOLUTIONS, INC
 6863 CR #60
 WINDSOR, CO

DRAWING No.	L2		
JOB No.	07.08	DESCRIPTION	ANGLE
DRAWN BY		REVISION No.	
DATE DRAWN	05/04/2007	REVISION DATE	



4	9C
2	14B
2	14F
Qty.	In Assembly

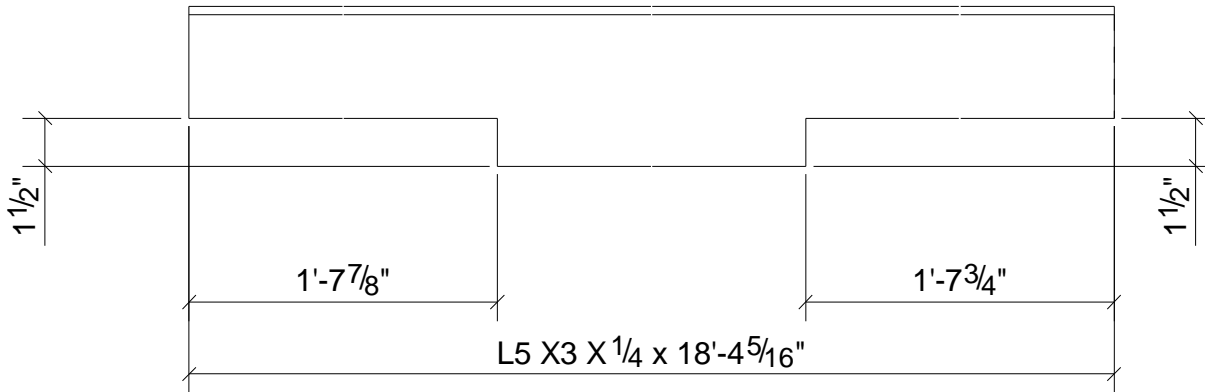
L3	L4X3-1/2X3/8	A36	8	0'-8 1/2"	133	6	
MARK	SIZE	GRADE	QTY.	LENGTH	AREA	WEIGHT	
MATERIAL LIST FOR WORKSHOP					TOTALS	0 in ²	0 lb/ft

METAL SOLUTIONS, INC
 6863 CR #60
 WINDSOR, CO

DRAWING No.

L3

JOB No.	07.08	DESCRIPTION	ANGLE
DRAWN BY		REVISION No.	
DATE DRAWN	05/04/2007	REVISION DATE	



1	14C
Qty.	In Assembly

a13	L5"X3"X1/4"	A36	1	18'-4 5/16"	3410	117	
MARK	SIZE	GRADE	QTY.	LENGTH	AREA	WEIGHT	
MATERIAL LIST FOR WORKSHOP					TOTALS	0 in ²	0 lb/ft

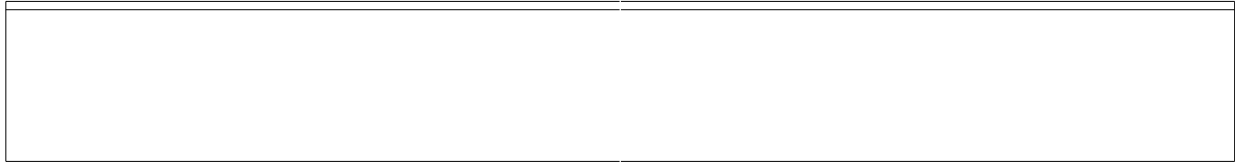
METAL SOLUTIONS, INC

6863 CR #60
WINDSOR, CO

DRAWING No.

a13

JOB No.	07.08	DESCRIPTION	ANGLE
DRAWN BY		REVISION No.	
DATE DRAWN	05/04/2007	REVISION DATE	

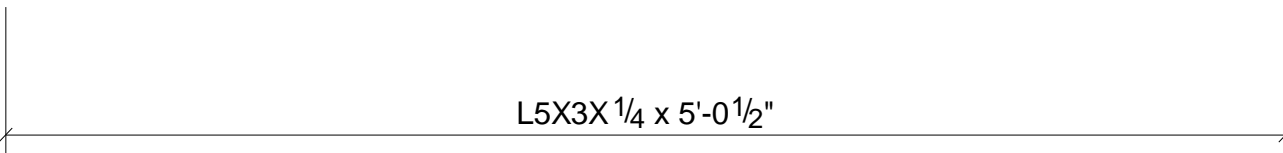
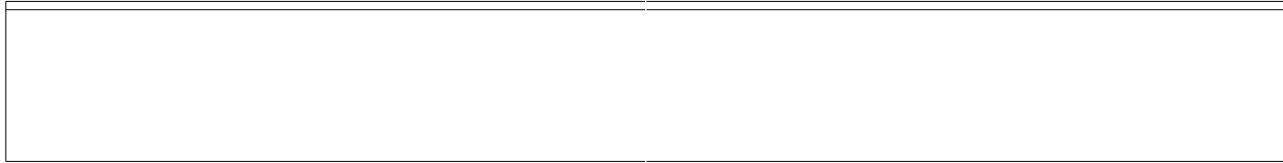


L5 X3 X 1/4 x 19'-5 1/2"

1	14B
1	14F
Qty.	In Assembly

a14	L5"X3"X1/4"	A36	2	19'-5 1/2"	3740	128	
MARK	SIZE	GRADE	QTY.	LENGTH	AREA	WEIGHT	
MATERIAL LIST FOR WORKSHOP					TOTALS	0 in ²	0 lb/ft

METAL SOLUTIONS, INC 6863 CR #60 WINDSOR , CO	DRAWING No. a14	
	JOB No.	07.08
	DRAWN BY	
	DATE DRAWN	05/04/2007
	DESCRIPTION	ANGLE
	REVISION No.	
	REVISION DATE	



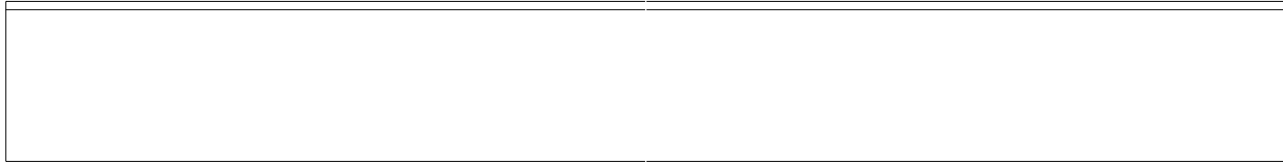
L5X3X 1/4 x 5'-0 1/2"

2	17H
Qty.	In Assembly

a23	L5X3X1/4	A36	2	5'-0 1/2"	972	33	
MARK	SIZE	GRADE	QTY.	LENGTH	AREA	WEIGHT	
MATERIAL LIST FOR WORKSHOP					TOTALS	0 in ²	0 lb/ft

METAL SOLUTIONS, INC
 6863 CR #60
 WINDSOR , CO

DRAWING No.	a23		
JOB No.	07.08	DESCRIPTION	ANGLE
DRAWN BY		REVISION No.	
DATE DRAWN	05/04/2007	REVISION DATE	



L5X3X $\frac{1}{4}$ x 5'-0"

5	17J
Qty.	In Assembly

a25	L5X3X1/4	A36	5	5'-0"	964	33	
MARK	SIZE	GRADE	QTY.	LENGTH	AREA	WEIGHT	
MATERIAL LIST FOR WORKSHOP					TOTALS	0 in ²	0 lb/ft

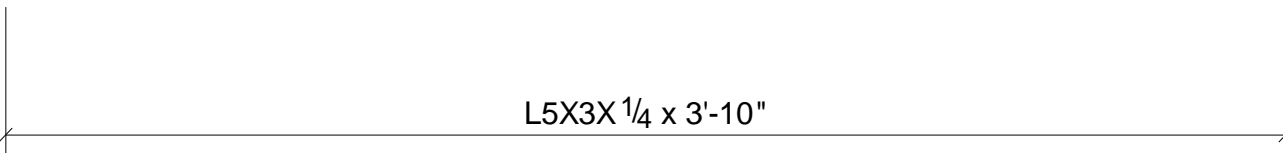
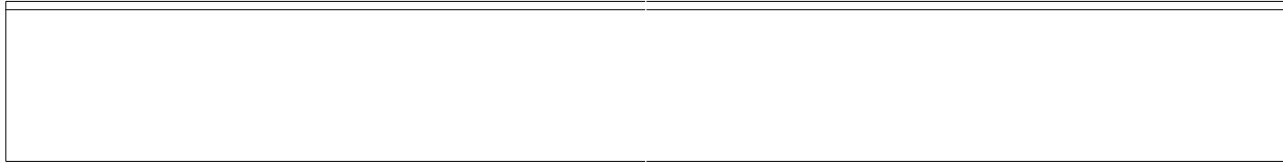
METAL SOLUTIONS, INC

6863 CR #60
WINDSOR, CO

DRAWING No.

a25

JOB No.	07.08	DESCRIPTION	ANGLE
DRAWN BY		REVISION No.	
DATE DRAWN	05/04/2007	REVISION DATE	



L5X3X 1/4 x 3'-10"

10	17J
Qty.	In Assembly

a26	L5X3X1/4	A36	10	3'-10"	740	25	
MARK	SIZE	GRADE	QTY.	LENGTH	AREA	WEIGHT	
MATERIAL LIST FOR WORKSHOP					TOTALS	0 in ²	0 lb/ft

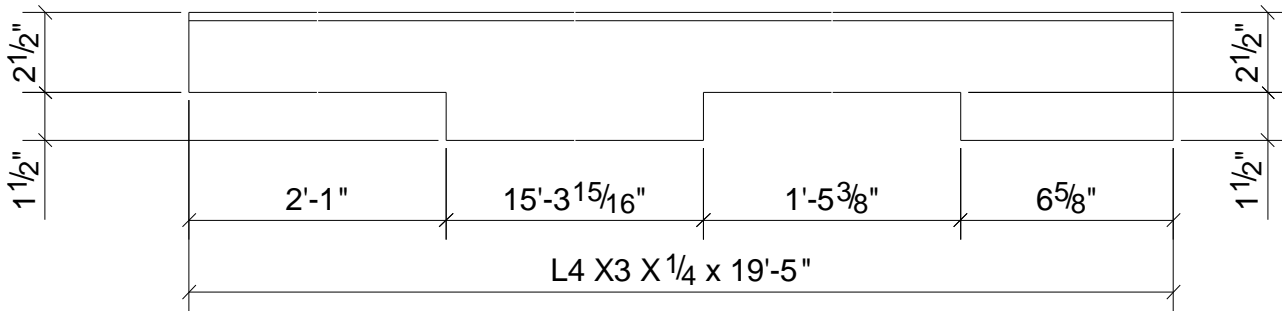
METAL SOLUTIONS, INC

6863 CR #60
WINDSOR , CO

DRAWING No.

a26

JOB No.	07.08	DESCRIPTION	ANGLE
DRAWN BY		REVISION No.	
DATE DRAWN	05/04/2007	REVISION DATE	

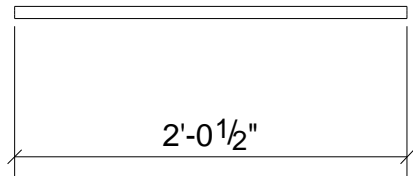


1	14D
Qty.	In Assembly

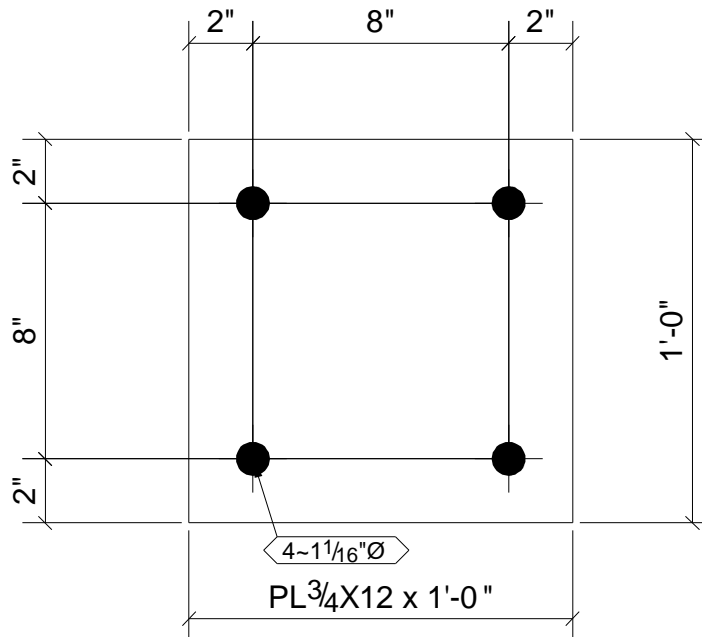
a29	L4"X3"X1/4"	A36	1	19'-5"	3139	107	
MARK	SIZE	GRADE	QTY.	LENGTH	AREA	WEIGHT	
MATERIAL LIST FOR WORKSHOP					TOTALS	0 in ²	0 lb/ft

METAL SOLUTIONS, INC
 6863 CR #60
 WINDSOR , CO

DRAWING No.	a29		
JOB No.	07.08	DESCRIPTION	ANGLE
DRAWN BY		REVISION No.	
DATE DRAWN	05/04/2007	REVISION DATE	



16 - RUNGS - m1



1	1A
1	1B
2	1C
2	1D
1	2A
1	2B
2	2C
2	2D
1	3A
1	3B
1	3C
1	3D
1	4A
1	4B
1	4C
1	4D
1	5A
1	6A
Qty.	In Assembly

p3	PL3/4"X12"	A36	22	1'-0"	324	31	
MARK	SIZE	GRADE	QTY.	LENGTH	AREA	WEIGHT	
MATERIAL LIST FOR WORKSHOP					TOTALS	0 in ²	0 lb/ft

METAL SOLUTIONS, INC

6863 CR #60
WINDSOR, CO

DRAWING No.

p3

JOB No.

07.08

DESCRIPTION

PLATE

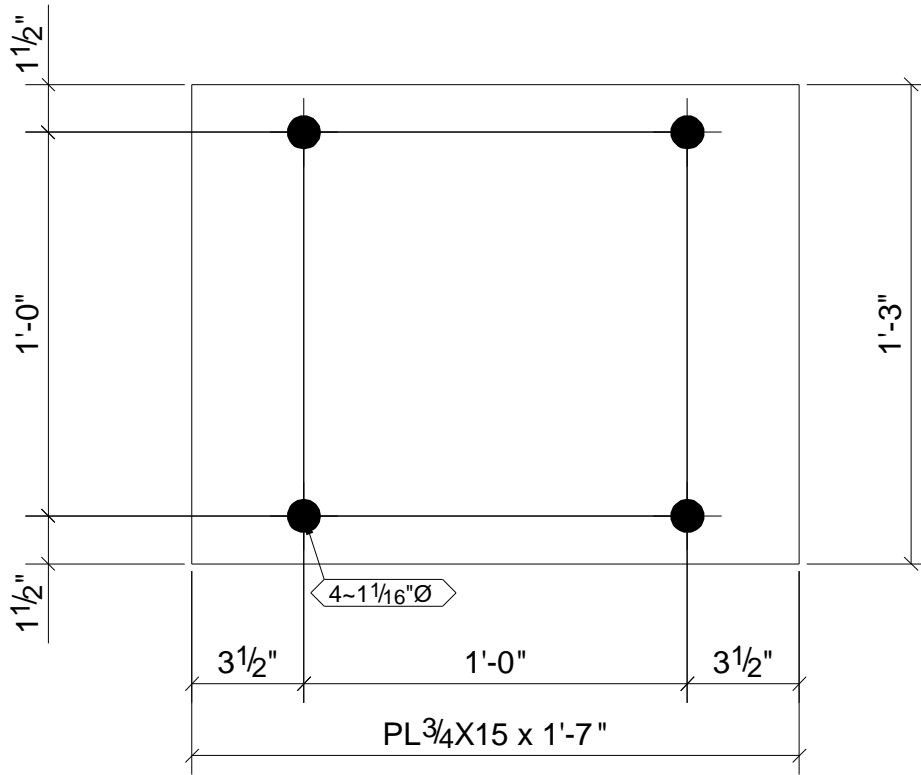
DRAWN BY

REVISION No.

DATE DRAWN

05/04/2007

REVISION DATE



1	7A
1	8A
Qty.	In Assembly

p4	PL3/4"X15"	A36	2	1'-7"	621	61	
MARK	SIZE	GRADE	QTY.	LENGTH	AREA	WEIGHT	
MATERIAL LIST FOR WORKSHOP					TOTALS	0 in ²	0 lb/ft

METAL SOLUTIONS, INC

6863 CR #60
WINDSOR, CO

DRAWING No.

p4

JOB No.

07.08

DESCRIPTION

PLATE

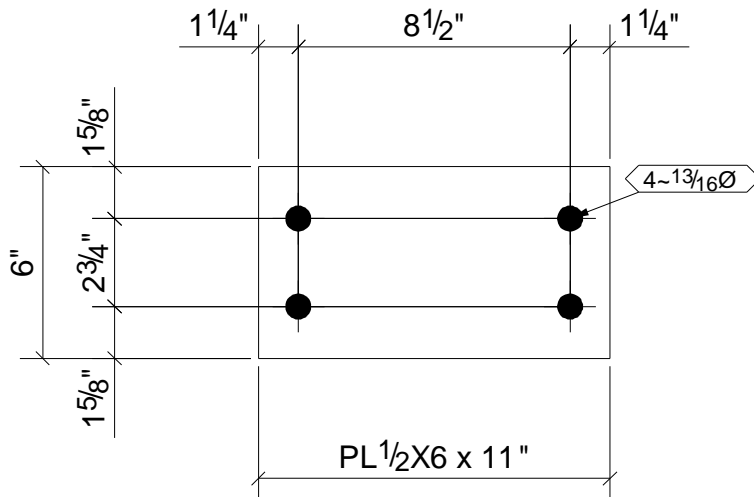
DRAWN BY

REVISION No.

DATE DRAWN

05/04/2007

REVISION DATE



2	1C
2	1D
2	2D
1	3C
1	3D
1	4A
Qty.	In Assembly

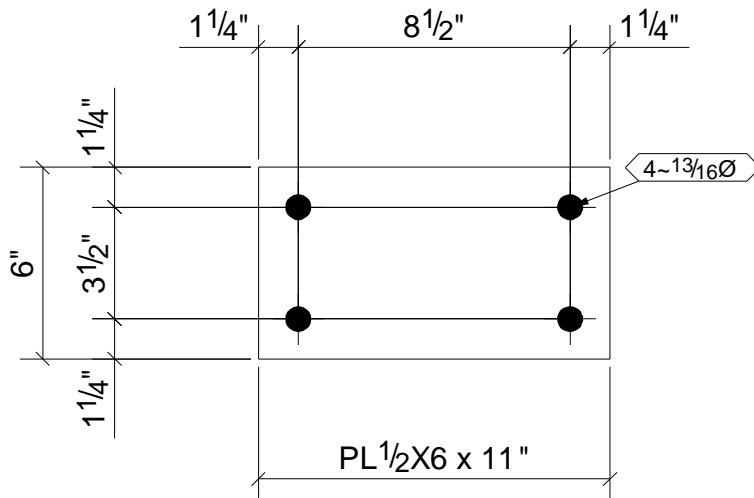
p8	PL1/2"x6"	A36	9	0'-11"	149	9	
MARK	SIZE	GRADE	QTY.	LENGTH	AREA	WEIGHT	
MATERIAL LIST FOR WORKSHOP					TOTALS	0 in ²	0 lb/ft

METAL SOLUTIONS, INC
 6863 CR #60
 WINDSOR, CO

DRAWING No.

p8

JOB No.	07.08	DESCRIPTION	PLATE
DRAWN BY		REVISION No.	
DATE DRAWN	05/04/2007	REVISION DATE	



2	2C
Qty.	In Assembly

p9	PL1/2"x6"	A36	2	0'-11"	149	9	
MARK	SIZE	GRADE	QTY.	LENGTH	AREA	WEIGHT	
MATERIAL LIST FOR WORKSHOP					TOTALS	0 in ²	0 lb/ft

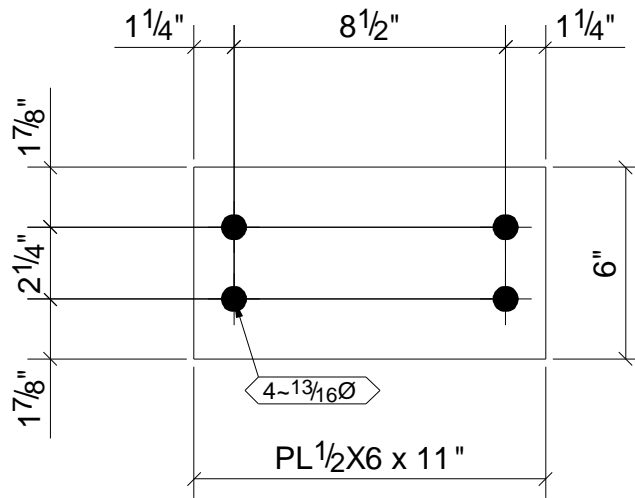
METAL SOLUTIONS, INC

6863 CR #60
WINDSOR, CO

DRAWING No.

p9

JOB No.	07.08	DESCRIPTION	PLATE
DRAWN BY		REVISION No.	
DATE DRAWN	05/04/2007	REVISION DATE	



1	4B
Qty.	In Assembly

p10	PL1/2"x6"	A36	1	0'-11"	149	9	
MARK	SIZE	GRADE	QTY.	LENGTH	AREA	WEIGHT	
MATERIAL LIST FOR WORKSHOP					TOTALS	0 in ²	0 lb/ft

METAL SOLUTIONS, INC

6863 CR #60
WINDSOR, CO

DRAWING No.

p10

JOB No.

07.08

DESCRIPTION

PLATE

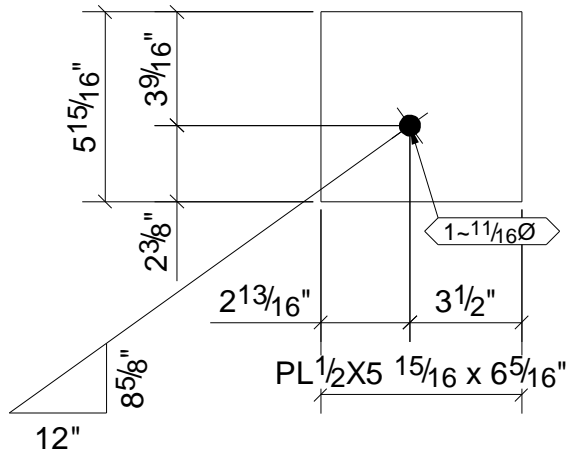
DRAWN BY

REVISION No.

DATE DRAWN

05/04/2007

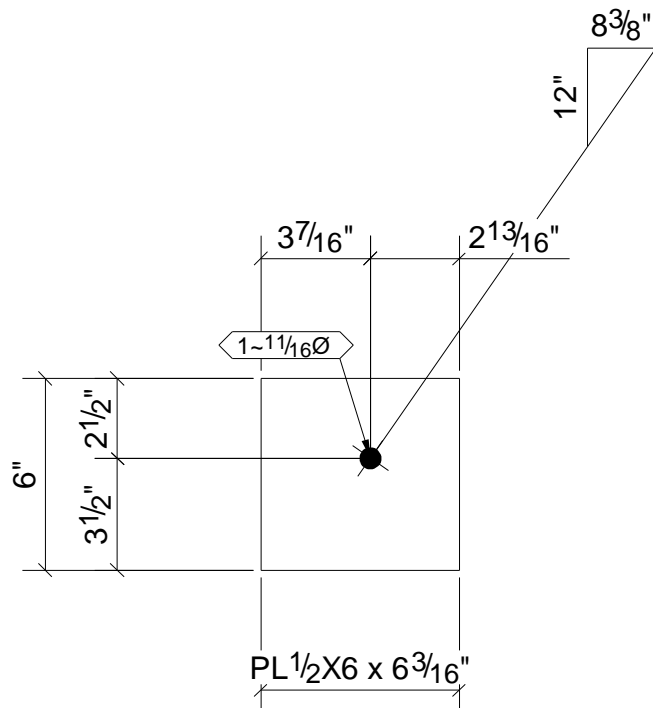
REVISION DATE



1	2A
Qty.	In Assembly

p11	PL 1/2" X 5 15/16"	A36	1	0'-6 5/16"	87	5	
MARK	SIZE	GRADE	QTY.	LENGTH	AREA	WEIGHT	
MATERIAL LIST FOR WORKSHOP					TOTALS	0 in ²	0 lb/ft

METAL SOLUTIONS, INC 6863 CR #60 WINDSOR, CO	DRAWING No.	p11	
	JOB No.	07.08	DESCRIPTION
	DRAWN BY		REVISION No.
	DATE DRAWN	05/04/2007	REVISION DATE
		PLATE	



1	4B
Qty.	In Assembly

p12	PL 1/2" X 6"	A36	1	0'-6 3/16"	87	5	
MARK	SIZE	GRADE	QTY.	LENGTH	AREA	WEIGHT	
MATERIAL LIST FOR WORKSHOP					TOTALS	0 in ²	0 lb/ft

METAL SOLUTIONS, INC
 6863 CR #60
 WINDSOR, CO

DRAWING No.

p12

JOB No.

07.08

DESCRIPTION

PLATE

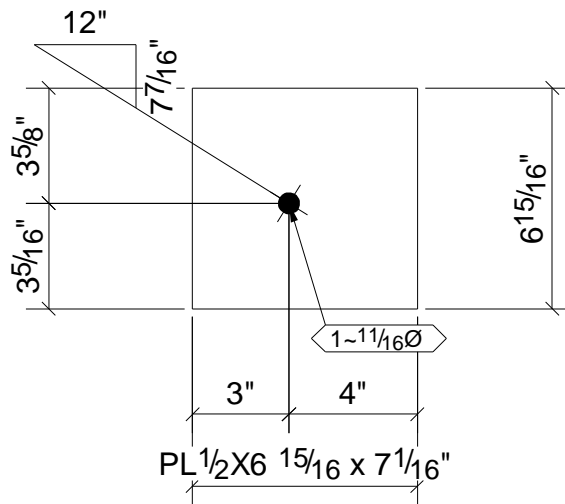
DRAWN BY

REVISION No.

DATE DRAWN

05/04/2007

REVISION DATE



1	4C
Qty.	In Assembly

p13	PL 1/2" X 6 15/16"	A36	1	0'-7 1/16"	111	7	
MARK	SIZE	GRADE	QTY.	LENGTH	AREA	WEIGHT	
MATERIAL LIST FOR WORKSHOP					TOTALS	0 in ²	0 lb/ft

METAL SOLUTIONS, INC

6863 CR #60
WINDSOR, CO

DRAWING No.

p13

JOB No.

07.08

DESCRIPTION

PLATE

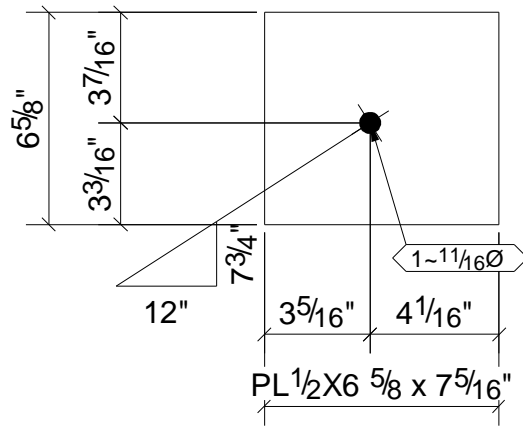
DRAWN BY

REVISION No.

DATE DRAWN

05/04/2007

REVISION DATE

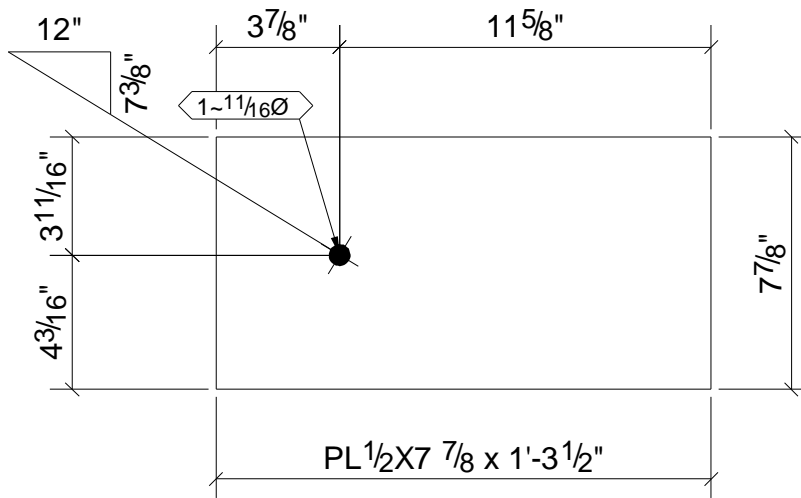


1	2B
Qty.	In Assembly

p14	PL 1/2" X 6 5/8"	A36	1	0'-7 5/16"	111	7	
MARK	SIZE	GRADE	QTY.	LENGTH	AREA	WEIGHT	
MATERIAL LIST FOR WORKSHOP					TOTALS	0 in ²	0 lb/ft

METAL SOLUTIONS, INC
 6863 CR #60
 WINDSOR, CO

DRAWING No.	p14		
JOB No.	07.08	DESCRIPTION	PLATE
DRAWN BY		REVISION No.	
DATE DRAWN	05/04/2007	REVISION DATE	

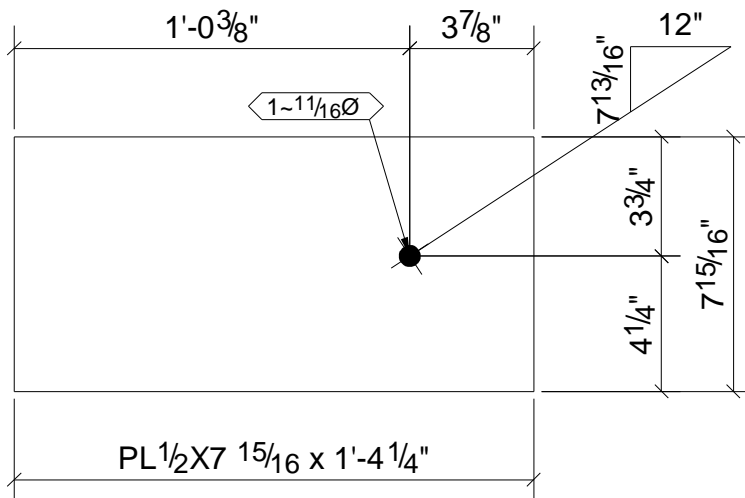


1	10A
Qty.	In Assembly

p15	PL1/2"x7 7/8"	A36	1	1'-3 1/2"	268	17	
MARK	SIZE	GRADE	QTY.	LENGTH	AREA	WEIGHT	
MATERIAL LIST FOR WORKSHOP					TOTALS	0 in ²	0 lb/ft

METAL SOLUTIONS, INC
 6863 CR #60
 WINDSOR, CO

DRAWING No.	p15		
JOB No.	07.08	DESCRIPTION	PLATE
DRAWN BY		REVISION No.	
DATE DRAWN	05/04/2007	REVISION DATE	



1	10A
Qty.	In Assembly

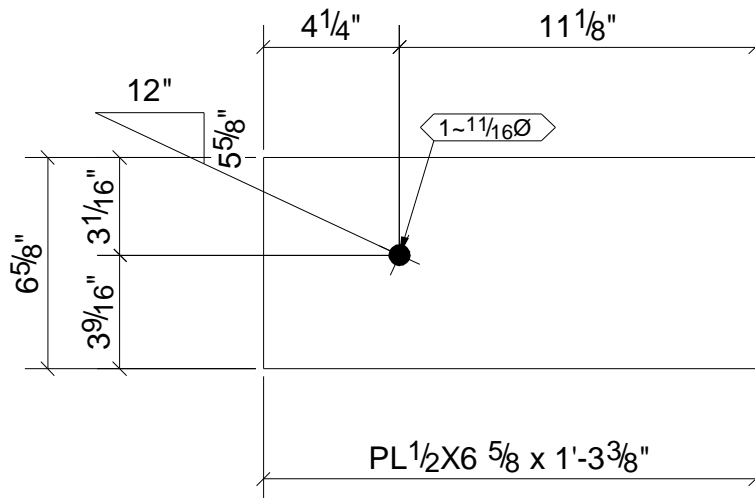
p16	PL 1/2 X 7 15/16"	A36	1	1'-4 1/4"	283	18	
MARK	SIZE	GRADE	QTY.	LENGTH	AREA	WEIGHT	
MATERIAL LIST FOR WORKSHOP					TOTALS	0 in ²	0 lb/ft

METAL SOLUTIONS, INC
 6863 CR #60
 WINDSOR, CO

DRAWING No.

p16

JOB No.	07.08	DESCRIPTION	PLATE
DRAWN BY		REVISION No.	
DATE DRAWN	05/04/2007	REVISION DATE	



1	14D
Qty.	In Assembly

p17	PL1/2"x6 5/8"	A36	1	1'-3 3/8"	225	14	
MARK	SIZE	GRADE	QTY.	LENGTH	AREA	WEIGHT	
MATERIAL LIST FOR WORKSHOP					TOTALS	0 in ²	0 lb/ft

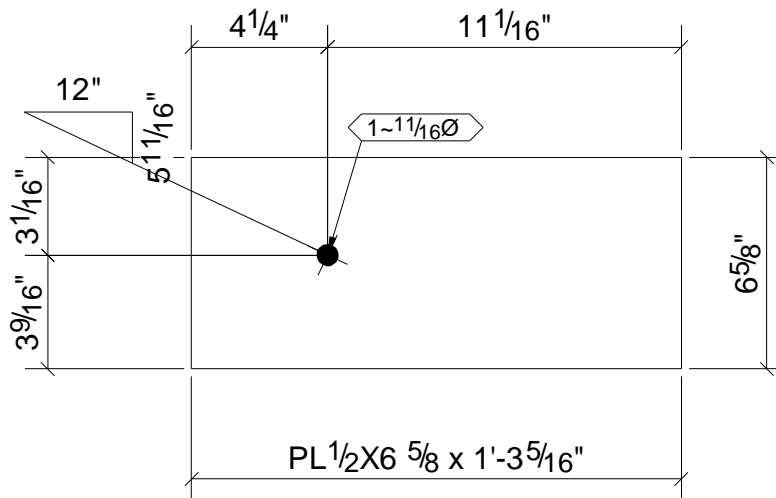
METAL SOLUTIONS, INC

6863 CR #60
WINDSOR, CO

DRAWING No.

p17

JOB No.	07.08	DESCRIPTION	PLATE
DRAWN BY		REVISION No.	
DATE DRAWN	05/04/2007	REVISION DATE	



1	11A
Qty.	In Assembly

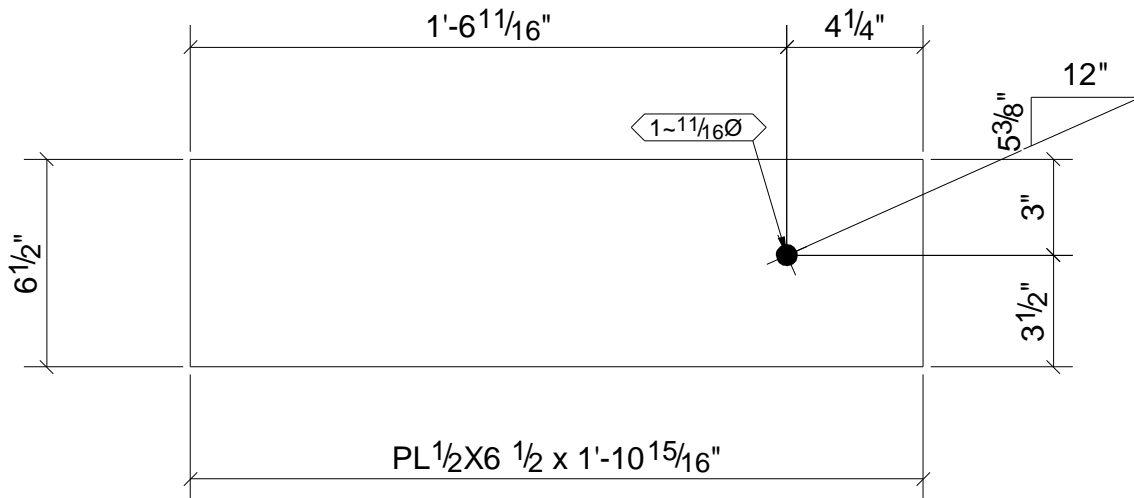
p18	PL1/2"x6 5/8"	A36	1	1'-3 5/16"	225	14	
MARK	SIZE	GRADE	QTY.	LENGTH	AREA	WEIGHT	
MATERIAL LIST FOR WORKSHOP					TOTALS	0 in ²	0 lb/ft

METAL SOLUTIONS, INC
 6863 CR #60
 WINDSOR, CO

DRAWING No.

p18

JOB No.	07.08	DESCRIPTION	PLATE
DRAWN BY		REVISION No.	
DATE DRAWN	05/04/2007	REVISION DATE	



1	14D
Qty.	In Assembly

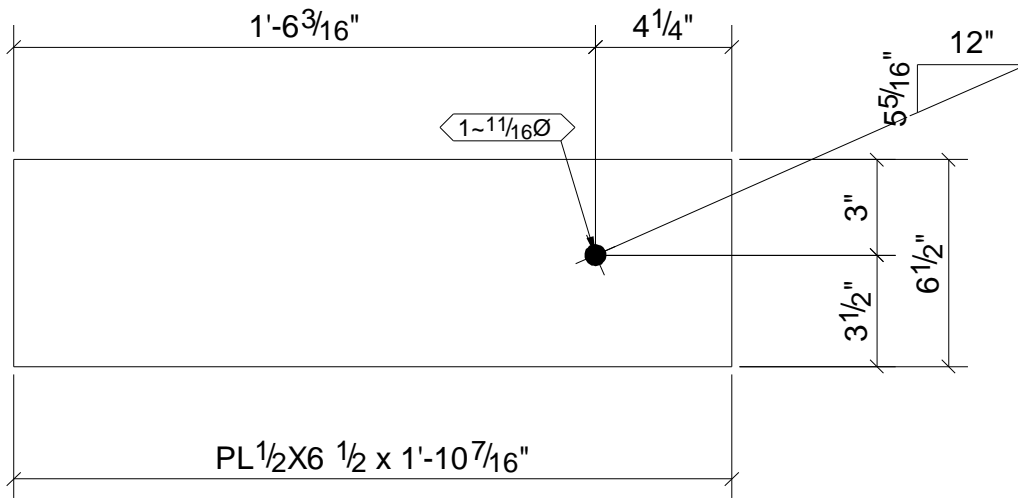
p19	PL1/2"x6 1/2"	A36	1	1'-10 15/16"	327	21	
MARK	SIZE	GRADE	QTY.	LENGTH	AREA	WEIGHT	
MATERIAL LIST FOR WORKSHOP					TOTALS	0 in ²	0 lb/ft

METAL SOLUTIONS, INC
 6863 CR #60
 WINDSOR, CO

DRAWING No.

p19

JOB No.	07.08	DESCRIPTION	PLATE
DRAWN BY		REVISION No.	
DATE DRAWN	05/04/2007	REVISION DATE	



						1	11A
						Qty.	In Assembly
p20	PL1/2"x6 1/2"	A36	1	1'-10 7/16"	320		21
MARK	SIZE	GRADE	QTY.	LENGTH	AREA	WEIGHT	
MATERIAL LIST FOR WORKSHOP					TOTALS	0 in ²	0 lb/ft

METAL SOLUTIONS, INC

6863 CR #60
WINDSOR, CO

DRAWING No.

p20

JOB No.

07.08

DESCRIPTION

PLATE

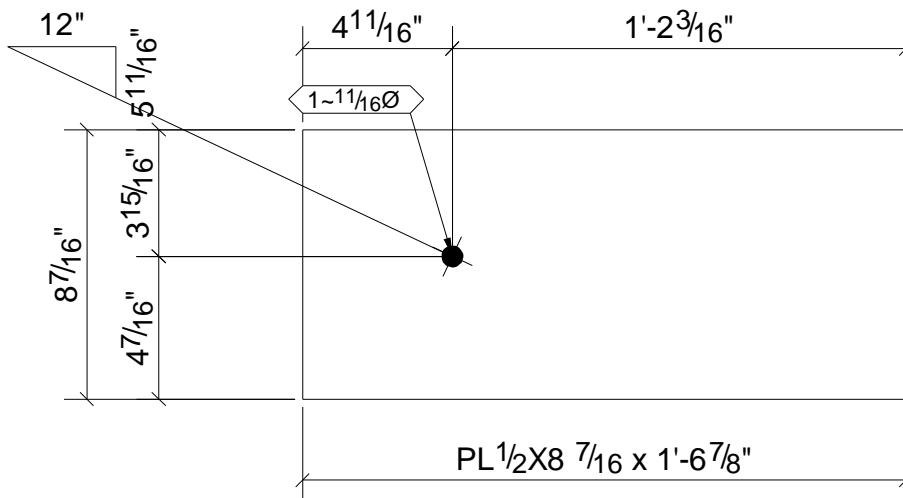
DRAWN BY

REVISION No.

DATE DRAWN

05/04/2007

REVISION DATE

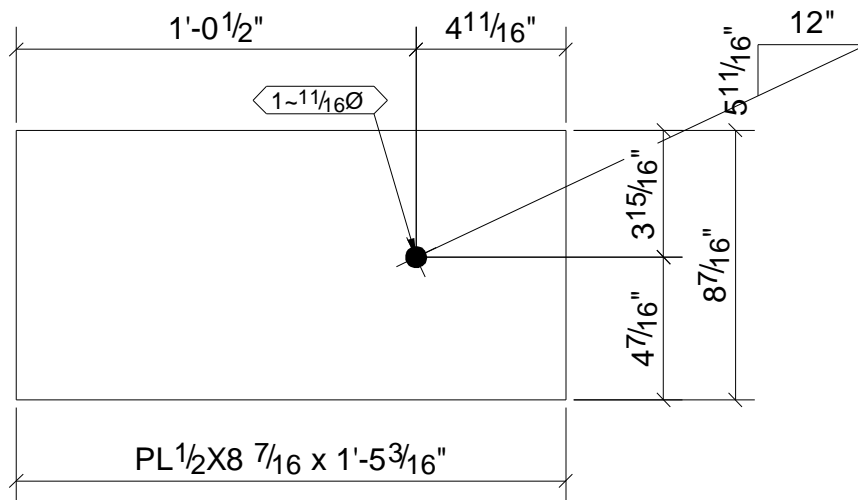


1	14C
Qty.	In Assembly

p21	PL 1/2" X 8 7/16"	A36	1	1'-6 7/8"	346	23	
MARK	SIZE	GRADE	QTY.	LENGTH	AREA	WEIGHT	
MATERIAL LIST FOR WORKSHOP					TOTALS	0 in ²	0 lb/ft

METAL SOLUTIONS, INC
 6863 CR #60
 WINDSOR, CO

DRAWING No.	p21		
JOB No.	07.08	DESCRIPTION	PLATE
DRAWN BY		REVISION No.	
DATE DRAWN	05/04/2007	REVISION DATE	



2	9B
Qty.	In Assembly

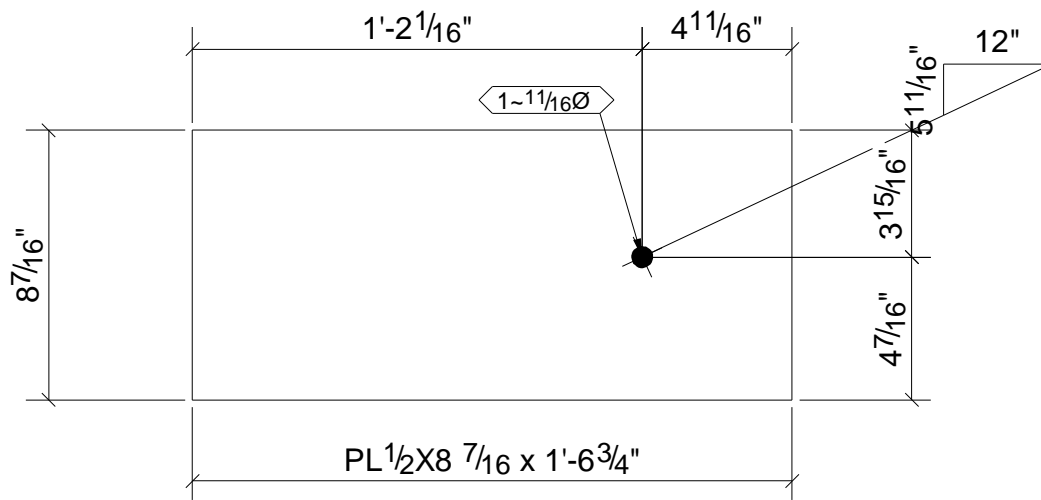
p22	PL 1/2" X 8 7/16"	A36	2	1'-5 3/16"	316	21	
MARK	SIZE	GRADE	QTY.	LENGTH	AREA	WEIGHT	
MATERIAL LIST FOR WORKSHOP					TOTALS	0 in ²	0 lb/ft

METAL SOLUTIONS, INC
 6863 CR #60
 WINDSOR, CO

DRAWING No.

p22

JOB No.	07.08	DESCRIPTION	PLATE
DRAWN BY		REVISION No.	
DATE DRAWN	05/04/2007	REVISION DATE	



1	14C
Qty.	In Assembly

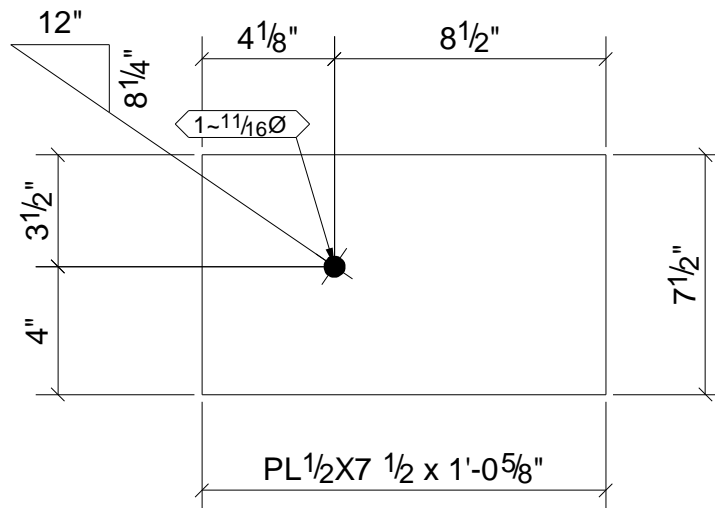
p23	PL1/2"X8 7/16"	A36	1	1'-6 3/4"	344	22	
MARK	SIZE	GRADE	QTY.	LENGTH	AREA	WEIGHT	
MATERIAL LIST FOR WORKSHOP					TOTALS	0 in ²	0 lb/ft

METAL SOLUTIONS, INC
 6863 CR #60
 WINDSOR, CO

DRAWING No.

p23

JOB No.	07.08	DESCRIPTION	PLATE
DRAWN BY		REVISION No.	
DATE DRAWN	05/04/2007	REVISION DATE	



1	9A
Qty.	In Assembly

p24	PL 1/2 X 7 1/2"	A36	1	1'-0 5/8"	210	13	
MARK	SIZE	GRADE	QTY.	LENGTH	AREA	WEIGHT	
MATERIAL LIST FOR WORKSHOP					TOTALS	0 in ²	0 lb/ft

METAL SOLUTIONS, INC

6863 CR #60
WINDSOR, CO

DRAWING No.

p24

JOB No.

07.08

DESCRIPTION

PLATE

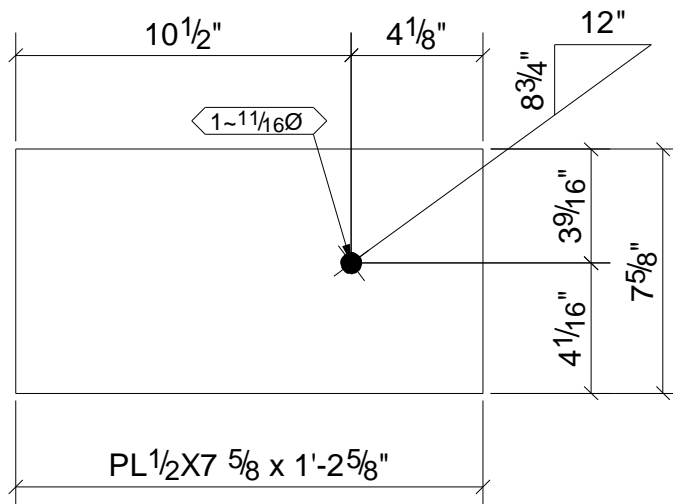
DRAWN BY

REVISION No.

DATE DRAWN

05/04/2007

REVISION DATE



1	9A
Qty.	In Assembly

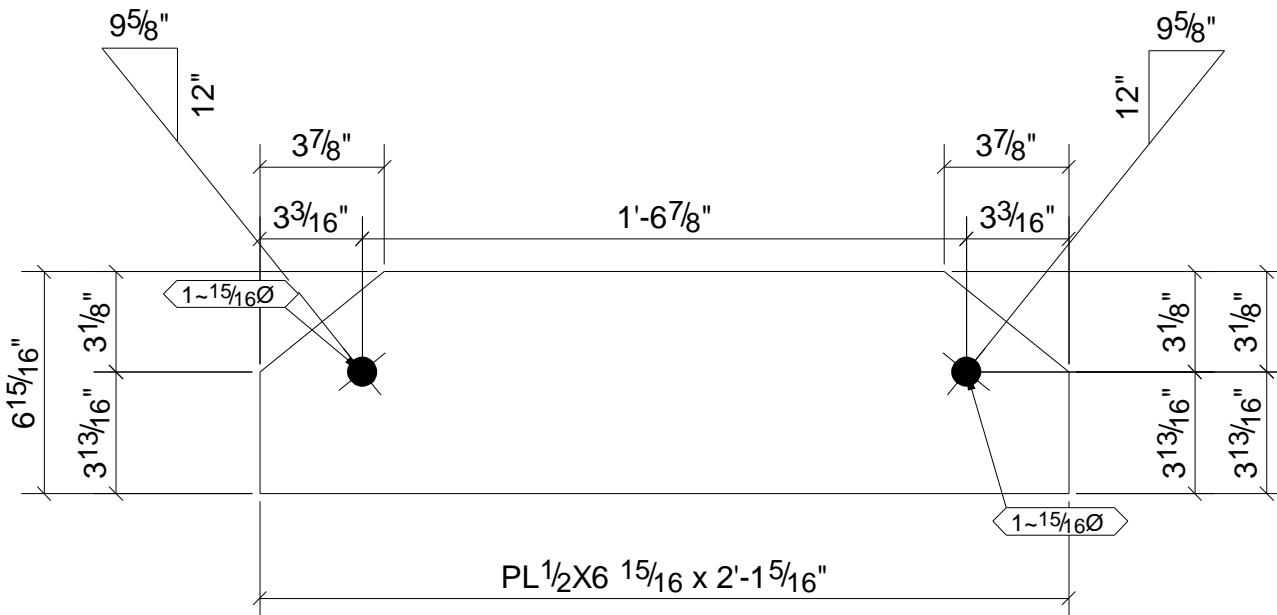
p25	PL 1/2" X 7 5/8"	A36	1	1'-2 5/8"	245	16	
MARK	SIZE	GRADE	QTY.	LENGTH	AREA	WEIGHT	
MATERIAL LIST FOR WORKSHOP					TOTALS	0 in ²	0 lb/ft

METAL SOLUTIONS, INC
 6863 CR #60
 WINDSOR, CO

DRAWING No.

p25

JOB No.	07.08	DESCRIPTION	PLATE
DRAWN BY		REVISION No.	
DATE DRAWN	05/04/2007	REVISION DATE	



1	12C
1	13A
Qty.	In Assembly

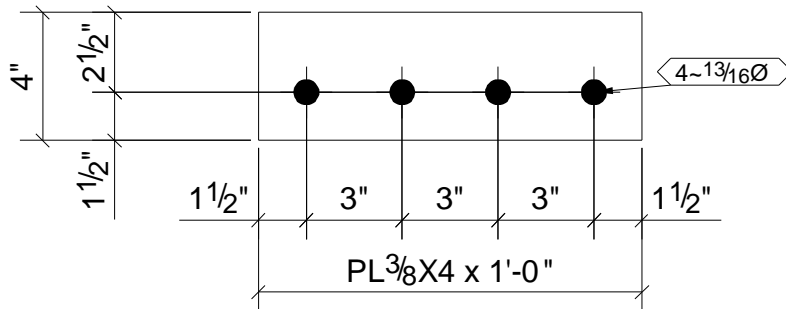
p26	PL 1/2" X 6 15/16"	A36	2	2'-1 5/16"	357	23	
MARK	SIZE	GRADE	QTY.	LENGTH	AREA	WEIGHT	
MATERIAL LIST FOR WORKSHOP					TOTALS	0 in ²	0 lb/ft

METAL SOLUTIONS, INC
 6863 CR #60
 WINDSOR, CO

DRAWING No.

p26

JOB No.	07.08	DESCRIPTION	PLATE
DRAWN BY		REVISION No.	
DATE DRAWN	05/04/2007	REVISION DATE	



1	1A
1	1B
1	2A
1	2B
1	3A
1	3B
1	4C
1	4D
2	5A
2	6A
1	7A
1	8A
Qty.	In Assembly

p29	PL3/8"X4"	A36	14	1'-0"	108	5	
MARK	SIZE	GRADE	QTY.	LENGTH	AREA	WEIGHT	
MATERIAL LIST FOR WORKSHOP					TOTALS	0 in ²	0 lb/ft

METAL SOLUTIONS, INC

6863 CR #60
WINDSOR, CO

DRAWING No.

p29

JOB No.

07.08

DESCRIPTION

PLATE

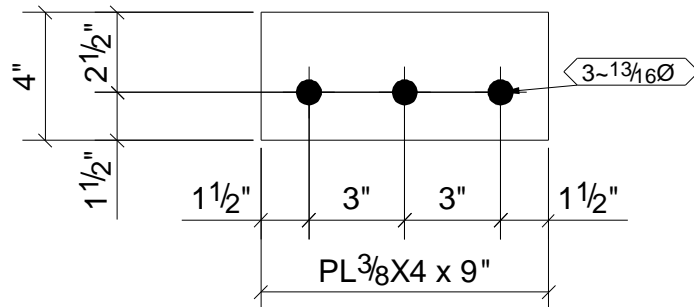
DRAWN BY

REVISION No.

DATE DRAWN

05/04/2007

REVISION DATE



1	1A
1	1B
2	2A
2	2B
1	3A
1	3B
1	4C
1	4D
3	5A
3	6A
1	7A
1	8A
Qty.	In Assembly

p30	PL3/8"x4"	A36	18	0'-9"	82	4	
MARK	SIZE	GRADE	QTY.	LENGTH	AREA	WEIGHT	
MATERIAL LIST FOR WORKSHOP					TOTALS	0 in ²	0 lb/ft

METAL SOLUTIONS, INC

6863 CR #60
WINDSOR, CO

DRAWING No.

p30

JOB No.

07.08

DESCRIPTION

PLATE

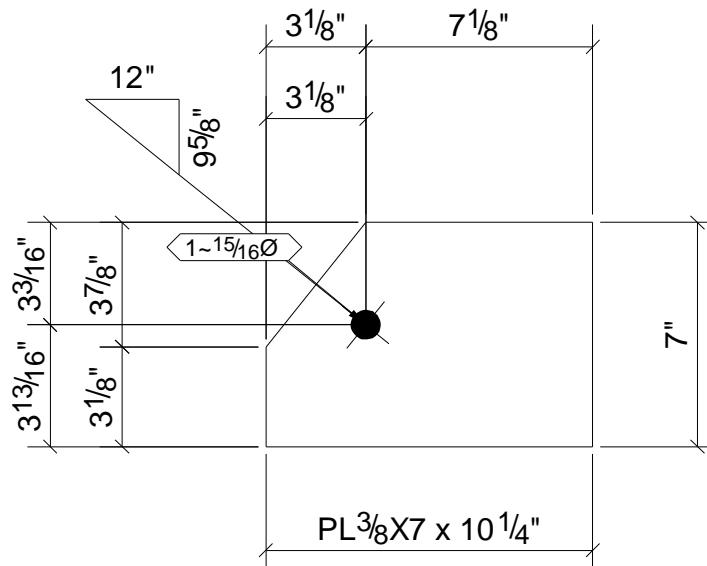
DRAWN BY

REVISION No.

DATE DRAWN

05/04/2007

REVISION DATE



1	3C
1	3D
2	4A
Qty.	In Assembly

p31	PL3/8"X7"	A36	4	0'-10 1/4"	143	7	
MARK	SIZE	GRADE	QTY.	LENGTH	AREA	WEIGHT	
MATERIAL LIST FOR WORKSHOP					TOTALS	0 in ²	0 lb/ft

METAL SOLUTIONS, INC

6863 CR #60
WINDSOR, CO

DRAWING No.

p31

JOB No.

07.08

DESCRIPTION

PLATE

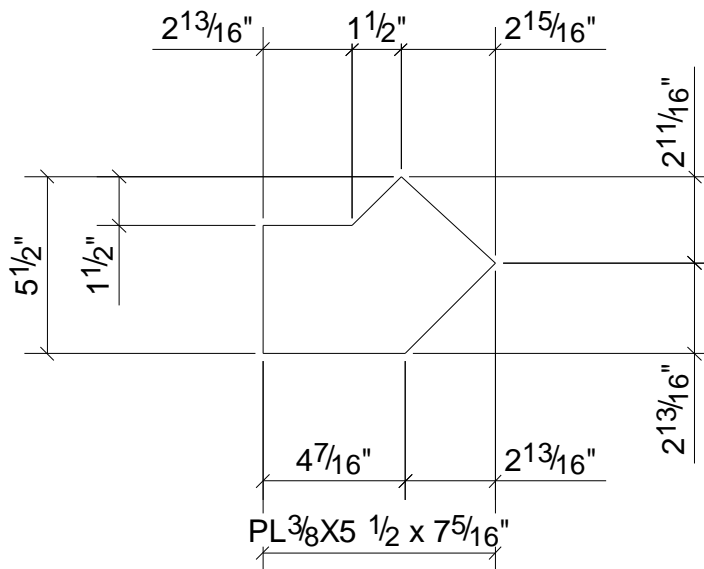
DRAWN BY

REVISION No.

DATE DRAWN

05/04/2007

REVISION DATE



6	B4
Qty.	In Assembly

p35	PL $\frac{3}{8}$ "X $5\frac{1}{2}$ "	A36	6	0'-7 $\frac{5}{16}$ "	62	3	
MARK	SIZE	GRADE	QTY.	LENGTH	AREA	WEIGHT	
MATERIAL LIST FOR WORKSHOP					TOTALS	0 in ²	0 lb/ft

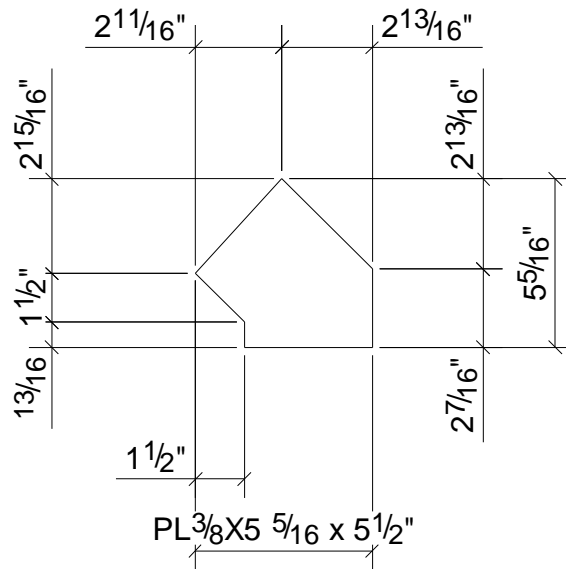
METAL SOLUTIONS, INC

6863 CR #60
WINDSOR, CO

DRAWING No.

p35

JOB No.	07.08	DESCRIPTION	PLATE
DRAWN BY		REVISION No.	
DATE DRAWN	05/04/2007	REVISION DATE	



6	B4
Qty.	In Assembly

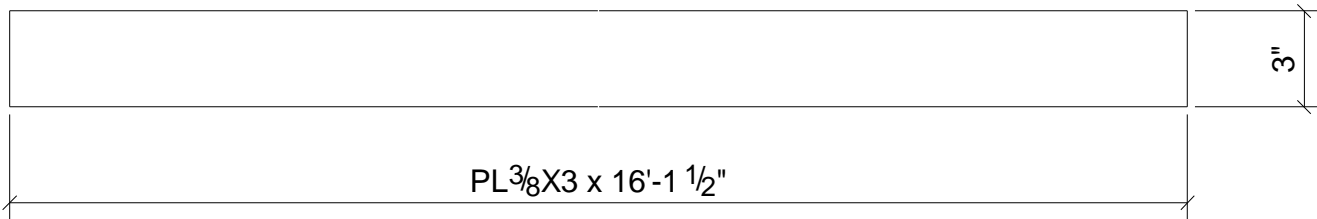
p36	PL 3/8" X 5 5/16"	A36	6	0'-5 1/2"	44	2	
MARK	SIZE	GRADE	QTY.	LENGTH	AREA	WEIGHT	
MATERIAL LIST FOR WORKSHOP					TOTALS	0 in ²	0 lb/ft

METAL SOLUTIONS, INC
 6863 CR #60
 WINDSOR, CO

DRAWING No.

p36

JOB No.	07.08	DESCRIPTION	PLATE
DRAWN BY		REVISION No.	
DATE DRAWN	05/04/2007	REVISION DATE	



					1	P5	
					Qty.	In Assembly	
p37	PL3/8"X3"	A36	1	16'-1 1/2"	1308	62	
MARK	SIZE	GRADE	QTY.	LENGTH	AREA	WEIGHT	
MATERIAL LIST FOR WORKSHOP					TOTALS	0 in ²	0 lb/ft

METAL SOLUTIONS, INC

6863 CR #60
WINDSOR, CO

DRAWING No.

p37

JOB No.

07.08

DESCRIPTION

PLATE

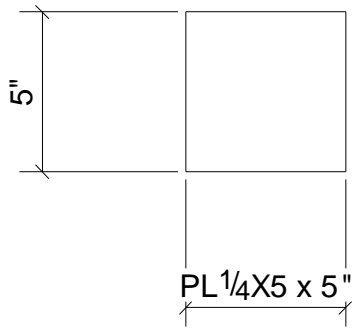
DRAWN BY

REVISION No.

DATE DRAWN

05/04/2007

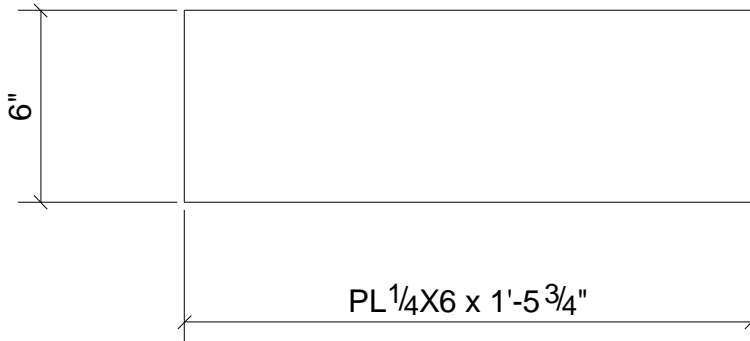
REVISION DATE



1	1A
1	1B
1	2A
1	2B
1	3A
1	3B
1	4C
1	4D
1	5A
1	6A
Qty.	In Assembly

p38	PL1/4"X5"	A36	10	0'-5"	55	2	
MARK	SIZE	GRADE	QTY.	LENGTH	AREA	WEIGHT	
MATERIAL LIST FOR WORKSHOP					TOTALS	0 in ²	0 lb/ft

METAL SOLUTIONS, INC 6863 CR #60 WINDSOR , CO	DRAWING No. p38	
	JOB No. 07.08	DESCRIPTION PLATE
	DRAWN BY	REVISION No.
	DATE DRAWN 05/04/2007	REVISION DATE



1	7A
1	8A
Qty.	In Assembly

p39	PL1/4"X6"	A36	2	1'-5 3/4"	225	7	
MARK	SIZE	GRADE	QTY.	LENGTH	AREA	WEIGHT	
MATERIAL LIST FOR WORKSHOP					TOTALS	0 in ²	0 lb/ft

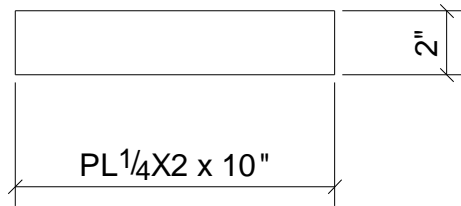
METAL SOLUTIONS, INC

6863 CR #60
WINDSOR , CO

DRAWING No.

p39

JOB No.	07.08	DESCRIPTION	PLATE
DRAWN BY		REVISION No.	
DATE DRAWN	05/04/2007	REVISION DATE	



p40	PL1/4"X2"	A36	12	0'-10"	46	1	
MARK	SIZE	GRADE	QTY.	LENGTH	AREA	WEIGHT	
MATERIAL LIST FOR WORKSHOP					TOTALS	0 in ²	0 lb/ft

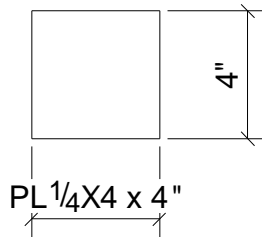
METAL SOLUTIONS, INC

6863 CR #60
WINDSOR, CO

DRAWING No.

p40

JOB No.	07.08	DESCRIPTION	PLATE
DRAWN BY		REVISION No.	
DATE DRAWN	05/04/2007	REVISION DATE	



20	B5
Qty.	In Assembly

p43	PL1/4"X4"	A36	20	0'-4"	36	1	
MARK	SIZE	GRADE	QTY.	LENGTH	AREA	WEIGHT	
MATERIAL LIST FOR WORKSHOP					TOTALS	0 in ²	0 lb/ft

METAL SOLUTIONS, INC
 6863 CR #60
 WINDSOR, CO

DRAWING No.

p43

JOB No.	07.08	DESCRIPTION	PLATE
DRAWN BY		REVISION No.	
DATE DRAWN	05/04/2007	REVISION DATE	